

**TORONTO 92
ENGRAVING CO. LTD.
COMPANY B. ST.**
PHONE 2893.
SPECIALISTS IN

**CATALOGUE
& ILLUSTRATING**

**WOOD ENGRAVING
HALFTONE ENGRAVING
ZINC ENGRAVING**

THE ONLY ONE—

There is one, and only one publication devoted to Credit Men and their peculiar interests. It was launched in 1892 and has never varied its original purpose—that of serving the credit men of the country. It is not a publication of diversified and scattered interests with a "Credit Man's Department," it is **THE CREDIT MAN'S MAGAZINE** first, last and all the time. If you are a credit man it's likely you are already a subscriber (most of the credit men are). It, however, you are not on the list, send for free sample copies and terms. (Mention Monetary Times.)

THE LAWYER & CREDIT MAN
150 Nassau St., New York City.

Every Issue of The Office Magazine

A. O. KITTREDGE, F.I.A., C.P.A., Editor
contains information on office topics

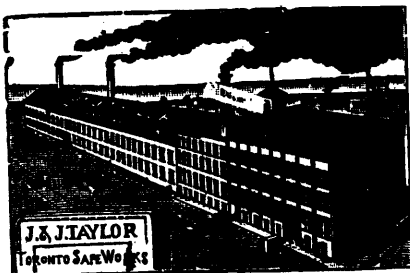
**Worth Many Times its Price
Per Year.**

It publishes only practical articles on practical subjects by practical business men.

Sample Copy Free

Issued monthly, subscription \$1 a year. Advertising rates on application.

ACCOUNTING ASSOCIATION, Publishers
23 Pine St., NEW YORK CITY



ESTABLISHED 1855

TAYLOR'S
DOUBLE TONGUE & GROOVE
SAFES

145
&
147 FRONT ST. EAST TORONTO.

King Iron Works

BUFFALO, N.Y.

Marine Engines

Our
Specialty
is

PROPELLER WHEELS—and their excellence
is acknowledged all over the lakes.
Write for prices.

GOODERHAM & WORTS

LIMITED
TORONTO, CANADA

ESTABLISHED
1839

Distillers

Manufacturers of

CANADIAN RYE

WHISKEY

Aged Whiskies from 4 to 8 years'
old a specialty.

PRICE LIST ON APPLICATION

All Cities, Towns, Villages should have protection against fire.

We have a full line of

Modern Steam Fire Engines

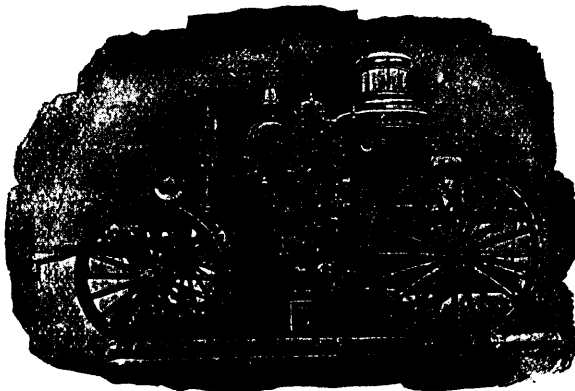
that cannot be surpassed in Designs
Durability or Effective Work. Also re-
built Steam and Hand Engines at very
low prices.

We supply full equipment—Engines,
Hose, Nozzles, Carts, and accept pay-
ment in ten yearly instalments where
necessary

ARIEL TRUCKS

Heavy, Medium, Light Hook and Lad-
der Wagons, Hose Wagons, Hose Carts,
and full lines of Fire Department Sup-
plies Correspondence solicited.

WATEROUS, BRANTFORD CAN.



Luxfer Prisms

Carry

Daylight

INTO THE

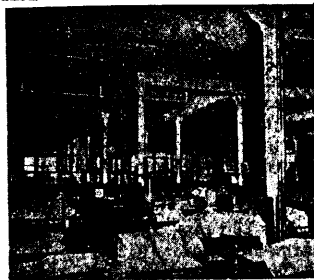
**T. Eaton Co.'s
Store.**



Before Luxfer Prisms Installed.



These
Cuts
Tell the
Story.



After Luxfer Prisms Installed

FOR FURTHER INFORMATION WRITE THE

Luxfer Prism Co.

(LIMITED)

58 Yonge Street, Toronto.