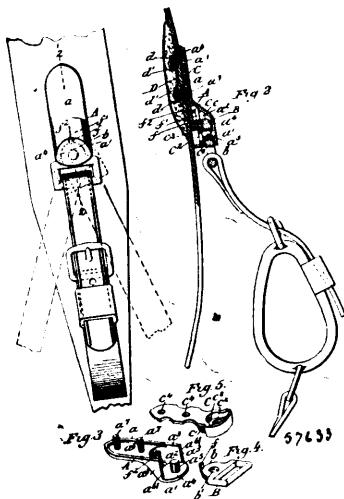


the sides of the side frame and the edge of the tie bar, respectively, substantially as set forth. 6th. In a car truck, the combination with a side frame formed of a single piece of cast metal and composed of a central portion or panel, pedestals arranged at the ends of the frame and upper and lower arch bars connecting said central panel with said pedestals, said pedestals having removable outer jaws provided at their ends with lateral lips, of a tie bar connecting the lower ends of said pedestals and provided at its end with lips which overlap the lower ends of said removable pedestal jaws, the lips of said jaws overlapping the sides of the frame and the edges of the tie bar, and the frame being provided at its ends with lips which overlap the upper ends of said jaws, substantially as set forth. 7th. The combination with a pair of side frames each formed of a single piece of cast metal and composed of a central horizontal pocket or socket, pedestals arranged at the ends of the frame, upper inclined arch bars extending from the upper portion of said pocket to said pedestals and lower oppositely inclined arch bars extending from the lower portion of said pocket to the pedestals, of a transom having its ends seated in the central pockets of the side frames, substantially as set forth. 8th. The combination with a pair of side frames each formed of a single piece of cast metal and composed of a central horizontal pocket or socket, pedestals arranged at the ends of the frame, upper inclined arch bars extending from the upper portion of said pocket to said pedestals and lower oppositely inclined arch bars extending from the lower portion of said pocket to the pedestals, of a tie bar connecting the lower ends of said pedestals, and a cast metal transom having its ends seated in the central pockets of the side frames and secured therein, substantially as set forth. 9th. The combination with side frames of the truck, of a transom composed of a pair of parallel cast metal bars each having inwardly facing flanges and provided on opposite sides with oblique stiffening ribs extending from the middle thereof toward its end, substantially as set forth. 10th. The combination with the side frames of a truck, of a transom composed of a pair of parallel cast metal bars each provided at its upper edge with an inwardly facing flange provided at its middle with a widened portion or wing, said wings forming supports for the centre plate of the truck, substantially as set forth.

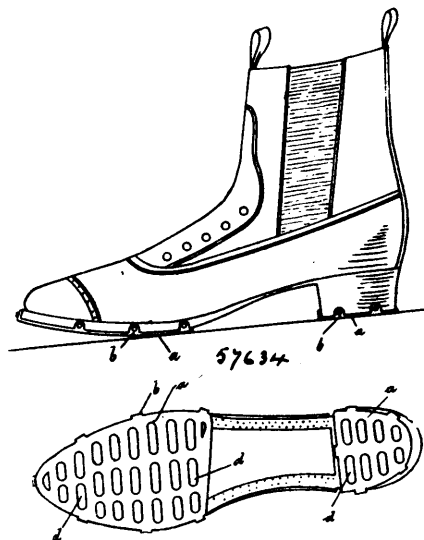
No. 57,633. Harness Tug. (Boucleleau de harnais.)



Alanson F. Dietz, Altamont, New York, U.S.A., 1st October, 1897; 6 years. (Filed 16th September, 1897.)

Claim.—1. In a harness tug, the combination of a casing having a socket formed therein, a pintle projecting from said casing into said socket, a strap plate pivoted on said pintle, and a means for holding said plate and casing together. 2nd. In a harness tug, the combination of a casing having a socket formed therein, a pintle projecting from said casing into said socket, a strap plate pivoted on said pintle, and a retaining plate covering said socket and holding said plate in place. 3rd. In a harness tug, the combination of a casing formed of a plate and cap, said plate and cap having recesses formed therein, a pintle projecting from the top of said cap into the recess formed in the said cap, a strap plate having a rounded portion adapted to fit in the recess formed in said cap and pivoted on said pintle, and a retaining plate adapted to cover the said recesses and to hold said strap plate in place. 4th. In a harness tug, the combination of a casing formed of a plate and cap, said plate and cap having recesses formed therein, a pintle projecting from the top of said cap into the recess formed in the said cap, a strap plate having a rounded portion adapted to fit in the recess formed in the cap and pivoted on said pintle, and a retaining plate adapted to cover said recesses and having a boss adapted to register with the recess formed in said cap and having an aperture therein adapted to engage with said pintle.

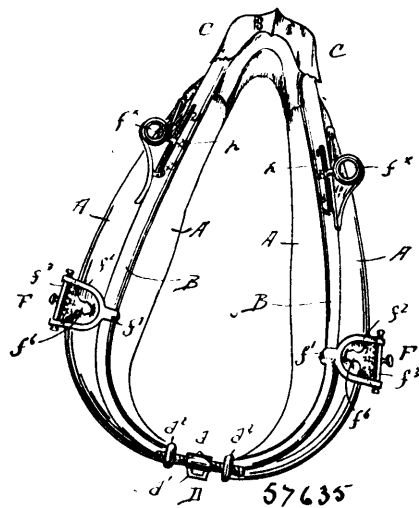
No. 57,634. Sole and Heel Protector. (Protecteur de semelle et talon.)



Richard Stachow, 42 Grabow St., Eberswalde, Prussia, 1st October, 1897; 6 years. (Filed 21st April, 1897.)

Claim.—1st. The protective devices for boots and shoes substantially as hereinbefore described and shown. 2nd. A device for protecting the soles and heels of boots and shoes, consisting of plates fixed by means of vertical fillets or lugs to the side surfaces of the sole or of the heel, said plates being composed of hard but elastic materials provided with any desired perforations, wart-like prominences, or being composed of woven wire fabric or the like in a frame, substantially as hereinbefore described and shown.

No. 57,635. Horse Collar and Hame. (Collier et attelle.)



Johannes Reimann, Union Hill, New Jersey, U.S.A., 1st October, 1897; 6 years. (Filed 21st September, 1897.)

Claim.—1st. The combination, with the collar portions and hame sections of a combined collar and hame, of slotted and interiorly toothed boxes attached to the hame sections and located in the upper ends of the collar portions, an extensible yoke provided with a cross-strap, guide rods hinged thereto and extending into the hame sections, means for setting the yoke higher or lower in the boxes, and means for clamping the yoke to or releasing it from said boxes, substantially as set forth. 2nd. The combination, with the collar portions and hame sections of a combined collar and hame, of