

## A Bargain! INDIAN HEAD LINEN!

Short ends, suitable for Fancy Work, Pillow Cases, Children's Dresses, Collars, etc. Undoubtedly a wonderful value,  
**64c. per pound.**

**Robert Templeton**

### Canadian National Railway EFFECTIVE MAY 1ST—SIDNEY, HALIFAX—ST. JOHN—MONTREAL—OT— TAWA—NORTH BAY—COCHRANE, WINNIPEG—VANCOUVER. All Trains Operate on Standard Time.

Lv. Sydney, N.S.—C. N. Rys. . . . .	8.30 a.m.	A.T.	1st Day
Lv. Halifax, N.S.—C. N. Rys. . . . .	8.10 p.m.	A.T.	1st Day
Lv. St. John, N.B.—C. N. Rys. . . . .	6.10 p.m.	A.T.	1st Day
Lv. Moncton, N.B.—C. N. Rys. . . . .	10.05 p.m.	A.T.	1st Day
Lv. Montreal, Que.—G. T. Ry. . . . .	9.00 p.m.	E.T.	2nd Day
Lv. Ottawa, Ont.—C. N. Rys. . . . .	12.20 a.m.	E.T.	3rd Day
Lv. North Bay, Ont.—T. & N. O. Ry. . . . .	8.10 a.m.	E.T.	3rd Day
Ar. Winnipeg, Man.—C. N. Rys. . . . .	7.30 p.m.	C.T.	4th Day
Ar. Saskatoon, Sask.—G.T.P. Ry. . . . .	1.05 p.m.	M.T.	5th Day
Ar. Edmonton, Alta.—G. T. P. Ry. . . . .	11.20 p.m.	M.T.	5th Day
Ar. Jasper, Alta.—C. N. Rys. . . . .	8.10 a.m.	P.T.	6th Day
Ar. Prince Rupert, B.C.—G.T.P. Ry. . . . .	7.15 p.m.	P.T.	Su. Tu. Th.
Ar. Vancouver, B.C.—C. N. Rys. . . . .	8.20 p.m.	P.T.	7th Day
Ar. Victoria, B.C.—C.P.S.S. . . . .	3.00 p.m.	P.T.	7th Day
Ar. Seattle, Wash.—C.P.S.S. . . . .	9.30 p.m.	P.T.	7th Day

Signs \*Indicates Daily; †Daily except Sundays.

For rates, reservations and information apply to  
**J. W. N. JOHNSTONE, General Agent,**  
Board of Trade Bldg., St. John's, Nfld.

## Gluten Meal.

"Maize"  
GLUTEN MEAL.  
"Diamond"  
GLUTEN MEAL.

At Lowest Prices.

**GEORGE NEAL, Ltd.**

### THE PANIC OF 1907.

Did not offer opportunities similar to the present for profitable investment. It is true this is the second opportunity since that date to invest in high class securities at fortune-making prices. Don't wait another twenty years for a similar chance but examine closely the investment offerings of to-day in railroads, oils, mines and industrials, and acquire sufficient of these low-cost, high-grade, dividend-paying issues to ensure monster profits when the market commences to register the inevitable advance.  
**DETAILS FREE—NO OBLIGATION.**

**J. J. LACEY & COMPANY, LIMITED,**  
STOCKS AND BONDS. TELEPHONE 1154.

## Salt! Salt! Salt!

Now landing ex. S.S. "Henrik Lund", consigned to the Newfoundland Government a cargo of best  
**TORREVIEJA SALT.**

For particulars as to price, etc., apply to  
**Department of MINISTRY OF SHIPPING**  
may 17, 11

Forty-Two Years in the Public Service—The Evening Telegram.

## ONLY \$8.25!



Men's Dark Tan, Mahogany Calf Laced Boot. English Last  
**ONLY \$8.25.**

Secure a Pair To-Day.

Mail Orders Receive Prompt Attention.

**F. Smallwood,**  
The Home of Good Shoes. 218 & 220 Water St.

### YOU SHOULD ENTRUST

the administration of your Will only to those experienced in such matters. Administration of Estates is this Company's business, and its officers are especially trained for all the duties involved and will be glad to discuss the subject with you.

Appoint this Company to act as your sole Executor or jointly with your friends.

### Montreal Trust Company

Sir Herbert S. Holt, President. A. J. Brown, K.C., Vice-Pres.  
E. G. DONALDSON, General Manager,  
11 Place d'Armes Square, Montreal.  
St. John's, Nfld., Branch, Royal Bank of Canada Building.  
sep 28, 1 yr, mod C. E. JUBIEN, Manager.

### "English" Football Boots FOR MEN.



We have just opened a small shipment of  
**English Football Boots.**

CLIFF Brand—All solid Leather, well constructed; Unbreakable Toes.

In Brown and White; Forward and Back Boots. Secure your size early at

**PARKER & MONROE, Ltd.**  
East End Branch.

### THE FINISHING TOUCH TO A DINING TABLE **Holmes & Edwards' FLATWARE.**

Into each piece of "Holmes & Edwards'" Flatware goes Intelligence, Artistry and Skill. Behind each piece is the Fixed Purpose that the Goods shall be Superior in Design, Quality, Materials and Workmanship, and amply fill that elusive craving for

"SOMETHING DIFFERENT."

**D. A. McRae**

## Salt! Salt! Salt!

We are offering ex Store, Port Union,  
**13,000 Hhds. Fishery Salt.**

PRICES, FOR CASH:  
In lots up to 100 hhds. . . . . \$2.20 per hhd.  
In lots over 100 hhds. . . . . \$2.00 per hhd.

Apply to  
**Department of Ministry of Shipping.**  
may 21, 11

### Great Realization Sale, AT 266 WATER STREET.

**White Shirting, 19c. yd.**

and numerous other bargains.  
C. Castle Bowling Bros. Open till 9 p.m.  
**W. BARNES, Proprietor.**  
may 13, 11

### Double Wear in Each Pair.



Fishermen! Why wear Rubber Boots when one pair of Smallwood's Hand-made Waterproof Boots will outwear at least 2 pairs of the Best Rubber Boots on the market to-day?

Fishermen! Encourage Home Industry by buying Smallwood's Hand-made Boots, and by doing so you will be dollars in pocket at the end of the voyage.

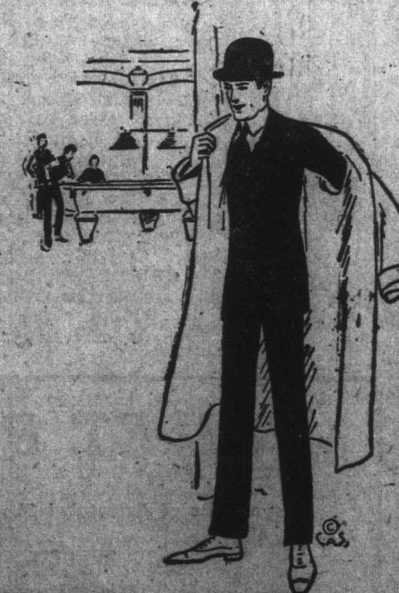
Mail Orders receive prompt attention.

**F. Smallwood,**  
218 & 220 Water St., St. John's, Newfoundland.  
apr 29, 11

### Ellis Make Clothes

Have that REAL STYLE that MEN recognize at a glance. They are carefully TAILORED by FIRST CLASS workmen, from the BEST ALL WOOL British Fabrics, and the latest LONDON and NEW-YORK STYLES.

All goods have been marked down to meet the drop in prices. Order your SPRING SUIT and OVERCOAT now.



**CHARLES J. ELLIS,**  
English and American Tailor,  
302 WATER STREET.

### Government Railway Commission.

**SOUTH COAST STEAMSHIP SERVICE.**  
Passengers leaving St. John's on 8.45 a.m. train Saturday, June 4th, will connect with S. S. "Meigle" at Placentia for the usual ports of call between Placentia and Port aux Basques.

### FREIGHT NOTICE. GREEN BAY STEAMSHIP SERVICE.

Freight for the following points in Green Bay will be accepted at the Freight Shed on Friday, June 3rd, from 9 a.m. Lewisporte (terminal), Exploite, Fortune Harbor, New Day Head, Leading Tickle, Triton, Pilley's Island, Boot Harbor (outward), Springdale, Wellman's Cove, Ward Harbor, Little Bay Islands, Little Bay, Three Arms, Harry's Harbor, Jackson's Cove, South West Arm (outward), Battling Brook (outward), North West Arm, Nipper's Harbor, Snook's Arm, Tilt Cove, Stone Cove.

### Government Railway Commission.

### LADIES' BRACELET WATCHES, In Gold Filled Cases, 15 & 7 Jewels. SWISS LEVER MOVEMENTS.

These Watches are well finished and guaranteed to give PERFECT SATISFACTION. We have a large stock to select from at moderate prices, and invite your inspection.

**R. H. TRAPNELL, Ltd.**  
Jewellers and Opticians, 197 Water Street.

### In Store and to Arrive BEST FISHERY SALT at lowest prices.

**M. Morey & Co., Ltd.**  
South and North Sides.  
apr 21, eod, 11

### KARL S. TRAPNELL, Opt., Eyesight Specialist, 307 Water St.

Testing Hours:  
10--1 2.30--6.  
Evenings: By Appointment.

### SAVE MONEY BY BUYING YOUR SUMMER GOODS NOW—COME AND SEE OUR PRICES.

House Dresses, \$1.60 to \$2.20; Ladies' Raglans, \$4.90 to \$5.90; Ladies' Blouses, 55c. to \$1.92; Ladies' Fancy Underskirts, \$1.20 to \$2.00; Ladies' Top Skirts, \$1.70 to \$5.90; Ladies' Silk Blouses, different shades, \$2.90 to \$3.90; Children's Summer Dresses, \$1.90 to \$2.25; Children's White Dresses, Job, 90c. each; Men's Ready-made Suits, \$10.00 to \$29.00; Men's Pants, \$2.90 to \$5.50; Boys' Suits, to fit 12 years to 16, \$8.50 to \$9.50; Children's Knee Lined Drawers, to fit 2 years to 6, 45c. a garment.

**ANTONI MICHAEL,**  
194 New Gower Street (East of Springdale Street).  
apr 20, w, f, t, e, y

### No Matter How the Fire is Caused

if you're not insured you're a loser. Take time to see about your policies. We give you the best companies and reasonable rates.

**PERCIE JOHNSON,**  
Insurance Agent.

Forty-Two Years in the Public Service --- The Evening Telegram