

and Various

Gifts

the Premier Store.

fied.
Valued.

Limited

ment.

BRIDGE,

on Agent.

ld. for :

--Grape Juice,

ld. --- Jellies,

scuits.

General Gro-

onary.

Jellies.

ods.

y Ginger Ale,

vertising Cal-

rance Co., of

Gower Street.

French Dry Cleaning.

Don't keep your Suit, Overcoat or Raglan from being French Dry Cleaned because it is too far to come to O'Keefe's. Send us word and we will come for and deliver your clothes carefully attended to.

C. J. O'KEEFE,

Clothes Doctor.
111 DUCKWORTH ST. EAST
(opp. Carnell's Carriage Factory)
may5, eod, tf

BLUE PUTTEE, Rawlin

Cross. Ice Cream supplied for private and public entertainments by the gallon, quart or pint. The highest grade only. Leave orders at the BLUE PUTTEE, or phone 567.
jan22, 1917

Overland

Here's the
Model 90

One of a half a million Overlands now in use.

Beautiful in appearance, powerful in performance, comfortable even on rough roads because the cantilever rear springs smooth out the bumps of the road. Big tyres help to ease the going.

There is plenty of leg room for both driver and passengers. Electric control from the steering column, simple to operate. Women drive it with ease.

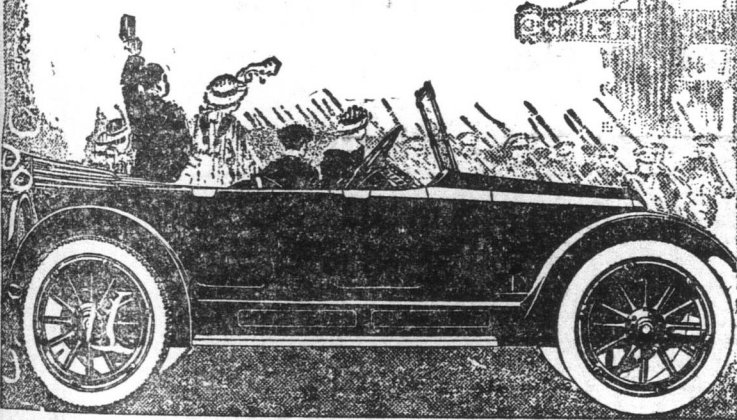
Light, but easy riding; powerful, but easy driving; is practical enough for the roughest going.

Completely equipped — nothing extra to buy.

The price makes it an unusual value.

T. A. MACNAB & CO.,
City Club Building,
Distributors for Nfld.

WILLIS-OVERLAND, Inc.
Toledo, Ohio, U. S. A.



Republic Motor Trucks,
7 Models, 3-4 Ton to 5 Ton.

In the United States REPUBLIC leads in every State in the Union as well as in every foreign country.

The reason can be summed up in two words: QUALITY and SERVICE.

T. A. MACNAB & CO.
Distributors for Nfld.

may14, eod, tf

Fishing for Cables.

Finding Broken Ends Two Miles Under The Sea.

The recent delays in cablegrams have been caused not only by the heavy Government calls on them, but because a number of the cables have been broken. The news actually came through recently, while the Postmaster-General was explaining the reasons for the delays, that one of the cables to America had just been repaired in mid-Atlantic.

It is a much more ticklish job repairing one of the big cables at sea than it is repairing the most serious breakdown on land. Telegraph-repairing ships are kept stationed in all parts of the world, ready at a moment's notice to steam out and locate and mend the break.

The position where the cable has broken is calculated by special instruments, and when the repair ship arrives there it drops a buoy overboard, and then, lowering a grapple, which it slowly drags across the route of the cable.

Fishing for cables is not so easy as it sounds, for often the cable is not where it was laid. It has a habit of

drifting out of its line, and in one case it had moved over ten miles from where it was laid down. This adds enormously to the length of time it takes to repair the cable. Two repairing ships were once trying for four months to repair one of the big Atlantic cables. The bill for that repair was over £60,000. The cable itself was lying at a depth of over two miles, which didn't make the task of finding it any easier! Once the cable is raised the task of splicing a new part over the break is a comparatively simple one, though occasionally storms interfere with the work, drive the ships off their course, and the whole job has to be started over again.

Abbey's
EFFERVESCENT SALT
Drives Away Headache

Rose and tan is a favorite combination for sports clothes. Princess lace veils are worn with white satin bridal gowns.

The "Baker."

Old Everett True depicts quite true the Pests we meet each day. But there is one he knows not of who ever comes to stay. He hangs around the club room tight, and squats behind your chair, a telling what you ought have done 'till you are forced to swear. The Card-room BAKE is never sick, he's always on the job, contributes naught to keep the rooms, he sits and smokes his cob; he haunts you like a fearful dream, he thrives on looking-on, but we will give a loud hurrah when from this sphere he's gone. We thought he'd starve on war receipts, but Pests just thrive on air, and there he squats to give advice each night behind your chair. Will some one please invent a plan to kill all Bakes in town, if so he'll rank with Edison and men of great renown. TIM.

Reid-Nfld. Co.
Appointments.

We understand that the following new appointments have been made in connection with the operations of the Reid-Newfoundland Co.:

Mr. Alexander Cobb, the most experienced of the officials as to maintenance of way, has been given charge of the steam-shovels and steam-ditchers for ballasting and general repairs to the road bed.

The operations of the railway in future will be in two divisions, with a Superintendent for each, Mr. H. J. Russell having charge from St. John's to Bishop's Falls, with headquarters at St. John's; and Mr. George Cobb having charge from Bishop's Falls to Port aux Basques, with headquarters at Bishop's Falls.

Mr. E. J. Hoskins has been appointed Traffic Manager, with headquarters at St. John's, and will have charge of the movement of all traffic over the railway and steamship systems.

Mr. W. C. Harvey has been appointed Superintendent of the Dry Dock. In addition to his local experience Mr. Harvey comes to his position with the experience of over two years in some of the largest shipbuilding yards in England and Scotland, gained whilst he was looking after the building of the Company's steamers.

Mr. John A. Fulmer becomes Superintendent of Motive Power. Mr. Fulmer has just come to Newfoundland direct from the Baldwin Locomotive Works of Philadelphia, where his reputation stands unusually high. He was specially selected from there because all the Company's engines are Baldwin built.

Sprang a Leak.

The Marine Dept. had the following message on Friday from Mr. J. P. Roche, of Branch:—"Schooner Annie May, taking cargo of fish for Marys-town, sprang a leak and forced to land cargo. She is now on way to St. Pierre to dock. If Cabot on service west ask her to have look out for schooner, which is leaking badly. Kindly instruct to render assistance, if needed." Minister Stone at once ordered the Cabot to proceed to the schooner's assistance.

Wedding Bells.

A very pretty wedding took place at Cochrane Street Church on Saturday night, when Mr. Joshua Ryan, of Pilley's Island, late Royal Newfoundland Regiment, led to the Altar Miss Sadie Day of Tilt Cove. The bride looked charming in a costume of white silk with bridal veil, ex-Private Joseph Duffett acted as best man, and the bride was attended by Miss Lizzie Diamond. The ceremony was performed by the Rev. Dr. Bond, after which the happy couple drove to the home of the bride's sister, where a quiet repast was partaken. The bride and groom leave today for Bell Island where the honeymoon will be spent.

Shipping Notes.

The schooner Gladys is loading general cargo for Flat Islands, at Ayre and Sons wharf.

The schooner Qui Vive is discharging a cargo of lumber at Bowring's wharf.

The schooner Island Bride is loading general cargo at Bishop and Sons wharf for Flat Islands, Bonavista Bay.

The S. S. Diana hauled into Crosbie and Company's wharf on Saturday to take bunker coal.

The schooner Grenville is discharging a cargo of lumber at Bowring's wharf.

The schooner Brunett is loading codfish at A. E. Hickman and Company's wharf for Oporto.

The schooner Arkona is loading fishery supplies at Job Brothers wharf for Bonavista.

The schooner Sunset Glow is at Harvey and Company's wharf discharging her cargo of codfish.

The schooner Lettie is discharging a cargo of codfish at A. E. Hickman and Company's wharf.

The schooner Alan is loading fishery supplies at A. H. Murray's wharf for Flat Islands, B. B.

The S. S. Neptune arrived here from North Sydney with a cargo of coal last evening to A. Harvey and Company.



NEW ARRIVALS IN FURNITURE

The Latest Importations Include

Dining Chairs, Hall Stands,
Bureaus and Stands,
Complete Bedroom Sets,
Couches, Parlor Furniture, Lamps,
Bedsteads, Springs, Mattresses, etc.

There is no home furnishing need that cannot be best supplied at this Store—the largest and most completely equipped Furniture Store in Newfoundland. Whether it be only a single piece to complete some room or an entire outfit for a magnificent home you will find a better assortment here than elsewhere.

WHY NOT COME DOWN AND LOOK OVER THE NEW ARRIVALS?

THE ROYAL STORES LIMITED

MAJESTIC THEATRE

MONDAY

TUESDAY

Elsie Ferguson, in Robert Hichen's Great Novel,

6 Reels. "Barbary Sheep" 6 Reels.

A picture that should be seen by everybody that loves high-class pictures.
Artcraft production. And a real Comedy.

Main Floor, 10 cents.

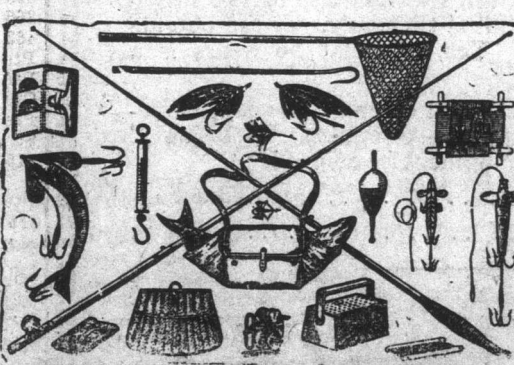
Balcony, 20 cents.

Matinee Daily: 5 and 10 cents.

MAJESTIC THEATRE

KNOWLING'S for FISHING TACKLE

Luckie,
Rainbow,
Bristol
Steel Rods.
Landing Nets.
Fly Books.
Reels.



Split Bamboo and
Lancewood Rods.
Trout and Salmon
Flies.
Hooks to Gut.
Ring'd Trout Hooks
Waders.

A splendid selection of TROUT and SALMON LINES. Quality supreme. Popular Prices.

G. KNOWLING, LIMITED.

Advertise in the "Evening Telegram."

Household Problems.

If your supply of hot water is unsatisfactory and uncertain the Gas Company can solve the problem for you. Estimates covering every requirement, and full information, will be gladly given, on application.

With gas available in your house the LAUNDRY work can be done at home at small expense.

For the chilly Spring days our Radiant Gas Fires will guard you from discomfort and colds. For perfect cooking results try one of our Gas Ranges. All prices and capacities to suit purchasers.

ST. JOHN'S GAS LIGHT CO.

Just received an assortment of Climbing Plants and Evergreens, Honeysuckles, Climbing Roses, Cedars, Clematis, Aristolochia, Virginia Creepers and Laurel. BISHOP, SONS & CO., LTD. (Grocery Dept.) Phone 679—may20, tf

MINARD'S LIMENT CURES DIPHTHERIA.