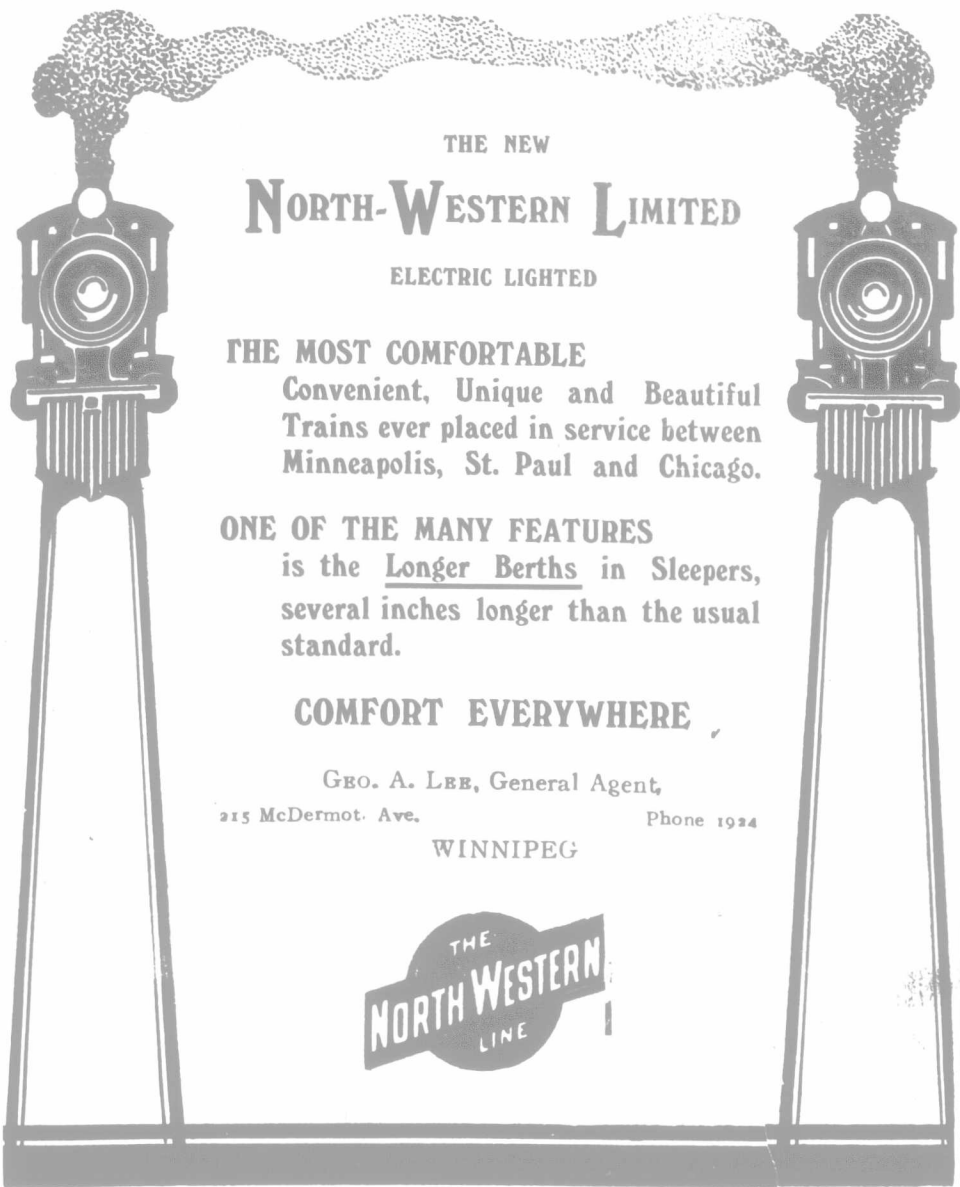


Ship Your Grain

G. B. MURPHY & CO., WINNIPEG

will get the Highest Prices.

REFERENCES: EASTERN TOWNSHIPS OR UNION BANK.




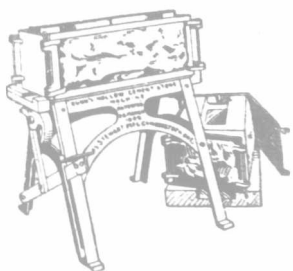
THE NEW
NORTH-WESTERN LIMITED
ELECTRIC LIGHTED

THE MOST COMFORTABLE
Convenient, Unique and Beautiful
Trains ever placed in service between
Minneapolis, St. Paul and Chicago.

ONE OF THE MANY FEATURES
is the Longer Berths in Sleepers,
several inches longer than the usual
standard.

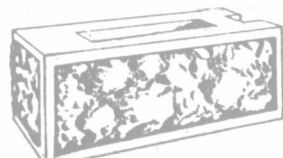
COMFORT EVERYWHERE

GEO. A. LEE, General Agent,
215 McDermot Ave. Phone 1924
WINNIPEG

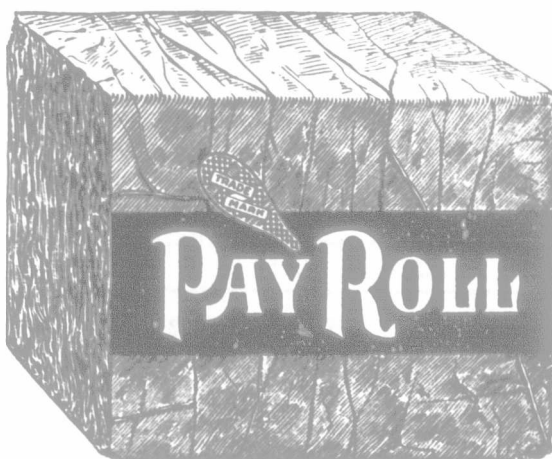
DUNN Hollow Concrete Block Machines

are in use from coast to coast, and every one giving the best satisfaction. Concrete blocks make the hand-somest, most durable and cheapest building material. They are simply and quickly made on the **DUNN MACHINE**; and the cost of outfit is very moderate.



Full Directions Furnished.
Write for Catalogue to DEPT. N.

The JAS. STEWART MFG. CO., Limited, WOODSTOCK, ONT



Bright Plug Chewing TOBACCO

10c. per Cut.

Butter Wrappers

YOUR BUTTER will bring you a higher price and will also find a ready buyer if properly done up in nicely printed wrappers. Send your tissue to us at once and we will give you a high quality piece of work at the following low rates:

	8 1/2 x 11 or 9 x 12	1000	additional 1000
Single Brand 1	- - -	\$2.76	\$1.00
Single Brand 2	- - -	2.00	.75
Single Brand 4	- - -	1.85	.65
Combination S.B. 4	- - -	1.75	.65
Single Brand 9 up	- - -	1.70	.45
Combination Brand S.B. 9 up	- - -	1.50	.45

Victoria Printing Co.

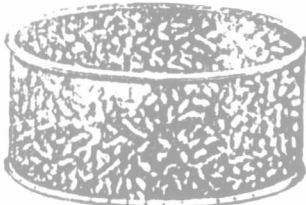
Box 345 WINNIPEG, Man.



Through Tourist Car Service to California.

Via Chicago, Great Western Railway. Cars leave Minneapolis and St. Paul on four days of the week—Monday, Tuesday, Wednesday, and Thursday. For full information apply to J. P. Elmer, G. P. A., St. Paul, Minn.

STEEL TANKS FOR ALL PURPOSES.



Corrugated and Plain. Galvanized Steel Tanks. Portable Grain Tanks.

RED RIVER METAL CO.
51 & 53 Aikins St. Winnipeg

B. P. RICHARDSON

BARRISTER, SOLICITOR
NOTARY PUBLIC
Solicitor for the "FARMER'S ADVOCATE" for the Northwest Territories.

GRENFELL, ASSA.

LANDS FOR SALE

If you are doing an Agricultural, Ranching or Commercial business, advertise in the Farmer's Advocate.



VERY LOW RATES TO THE Great Pacific Northwest

INCLUDING
WASHINGTON
The Fruit Orchard of America. Irrigated lands all along the lines of the

Northern Pacific Railway

OCEAN TICKETS

Full particulars from
J. F. SAINES, General Agent, W. H. COLLUM, Ticket Agent
301 MAIN STREET, WINNIPEG