

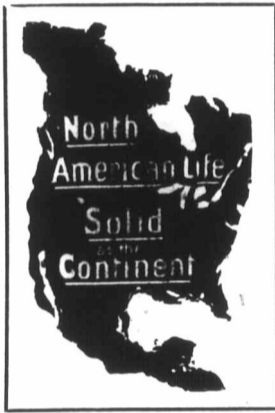
**"ST. AUGUSTINE"**  
REGISTERED  
**The Perfect Communion Wine**  
In use in hundreds of churches in Great Britain, West Indies, The United States, & etc.  
Cases 12 Qts \$4.50; 24 Pts \$5.50 F.O.B. Brantford.  
**J. S. Hamilton & Co. Brantford**  
ONTARIO.  
Manfrs. and Proprs. "St. Augustine Wine"

Telephone Main 7405

We are equipped to produce Printing Matter that will attract attention anywhere.  
Our prices are inducing and should attract the shrewd business man—try us.

**The Monetary Times Printing Co., of Canada, Limited**

62 Church St., Toronto, N.-W. Cor. of Court St.



# The Thought

of a possible helpless old age gives most people moments of anxiety.

## A Policy of Endowment Insurance

in the North American Life would provide against such a contingency and its attendant ills.

See one of our representatives to-day, or write for information to the

**North American Life Assurance Company**  
Home Office, Toronto

**MENEELY BELL CO**  
TROY, N.Y. AND  
177 BROADWAY, N.Y. CITY  
**BELLS**

**Church Chime Bells**  
Memorial Bells a Specialty.  
Methuen Bell Foundry Co., Methuen, Md., U.S.A.

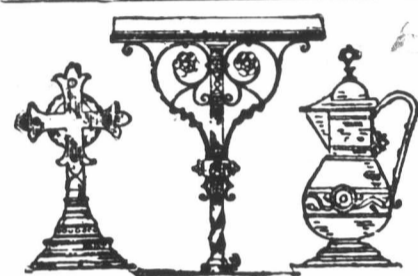


**GOLD MEDAL**  
FOR  
**ALE AND PORTER**  
AWARDED  
**JOHN LABATT**  
At St. Louis Exhibition, 1904.  
Only Medal for Ale in Canada.

**P. BURNS & CO.**  
WHOLESALE AND RETAIL DEALERS IN  
**COAL AND WOOD**  
HEAD OFFICE: 49 King Street East, Toronto  
ESTABLISHED 1856 TELEPHONE 131 AND 132  
Office and Yard, FRONT ST. near BATHURST. Telephone No. 449 and 2110  
Office and Yard, PRINCESS STREET DOCK. Telephone No. 190



**CHURCH BRASS WORK** of every description made to order on shortest notice. Designs furnished and satisfaction guaranteed.  
**KEITH & FITZSIMONS, LIMITED**  
111 King Street West, Toronto



**EAGLE AND RAIL LECTERNS**  
Altar Rails, Crosses, Vases, Disks, etc., Candlesticks, Vesper Lights, Memorial Brasses, Chandeliers, and Gas Fixtures, Communion Services, made or refinished. Electrical Contractors  
**CHADWICK BROS.**  
Show Room 193 East King St., Hamilton  
Factory, Oak Avenue, near Barton St.  
Send for Catalogue

## The Church Organ The Congregation Like

Not only do the critics endorse but the congregation are delighted with

### THE KARN

It has a beauty of tone that appeals to everyone, be he musically trained or not.

## THE KARN-MORRIS PIANO & ORGAN CO., Ltd.

Head Office, Woodstock, Canada  
Factories, Woodstock & Listowel

**Emblematic Religion.**—London, that city of marvels, has added another remarkable and impressive feature to its many notable attractions. What is not inaptly called a "Church of Silence," and more aptly might have been called a "Religious Art Gallery" through the munificence of Mrs. Russell Gurney, has been built on the Uxbridge Road opposite Hyde Park. The building goes by the name of the "Chapel of the Ascension." It is said that no less than 200 paintings—many of them with life-sized treatment, adorn the walls—and they all are purposed to tell the unfolding story of the Christian religion from its origin to its consummation. The artist of the paintings was the late Frederick Shields, a friend of Rossetti, Ruskin and Holman Hunt. Shields said of his work, "I might almost say that I have never dipped my brush in paint without a fervent prayer that

the meaning of the heart might express itself through the canvas." The building is always open in daytime, but never at night, and was designed as a place of rest, meditation and silent worship.

The Dowager Lady Buxton died recently at Colne House, Cromer, at the advanced age of 97. She was the widow of Sir E. N. Buxton, Bart., who died 53 years ago. Before her marriage she worked much with Elizabeth Fry at philanthropic and social work. She was the mother of six sons and five daughters and at the time of her death the descendants numbered 120. She was a keen supporter and a life member of the Bible Society and an honorary life member of the C.M.S. The funeral took place at Overstram, and the Bishop of Norwich was one of the officiating clergy. The number of mourners was very large.

During the recent restoration of Chelsea Old Parish Church several discoveries of peculiar interest were made, the most remarkable being the oak roof to the chancel, dating from the thirteenth century, which had been hidden by plaster since the time of Charles II. The whole floor had to be taken up, the roof removed, replaced, and repaired, the vestry enlarged, and the pulpit and font restored to their original positions. At about the same time a Jacobean cover to the font was discovered in the tower, and the staves of the old colours of the Chelsea Volunteers, with some fragments of the silk still adhering, were also brought to light. Two better preserved examples of the colours of the regiment—worked, it is said, by Queen Charlotte—have long hung over the chancel-arch, and some three years ago these were encased in gauze to secure their preservation. Much of the fame of the old building comes from its connection with Sir Thomas More, for here he acted as server at Mass and as a singer in the choir. On the south wall of the chancel is a black marble tablet to his memory, the epitaph being his own composition. In the churchyard is the large canopied tomb of Sir Hans Sloane, the physician, who bought the manor from the Cheyne family.

## "MOST MEN"

—it has been remarked—"need Life Insurance—or need more Life Insurance."

Take a personal view. Is your life uninsured or underinsured?

In either event, the remedy is easy if you are insurable. Write to-day for particulars of the Policies that cost least and return the highest Profits to Policyholders—that is to say, the Policies of

**The Great-West Life Assurance Company**  
Head Office - Winnipeg

## TARTAN

## Steamer and Motor Rugs

Made of fine pure Saxony Wool in various combinations of bright and dark Tartans or plain colors in the patterns of the principal SCOTTISH CLANS, FAMILIES and REGIMENTS in various sizes, qualities and weights, etc.

\$5.00 \$6.00 \$7.00 \$8.00 \$10.00

Send for Illustrated Price List

**JOHN CATTO & SON**  
55-61 King St. East, Toronto



## The Testimony of Science to the Credibility of the Book of Jonah

A VINDICATION OF THE NARRATIVE OF HIS ADVENTURE WITH THE WHALE

By  
**Rev. J. W. BEAUMONT,**  
D.D., M.D.

In Pamphlet Form,  
Price Five Cents.

**Canadian Churchman Office**  
36 Toronto Street, Toronto, Ont.

tion with Sir Thomas More, for here he acted as server at Mass and as a singer in the choir. On the south wall of the chancel is a black marble tablet to his memory, the epitaph being his own composition. In the churchyard is the large canopied tomb of Sir Hans Sloane, the physician, who bought the manor from the Cheyne family.

TORONTO  
Subscrip  
NOTICE  
Toronto O  
ADVANCE.  
ADVERT  
ADVERT  
medium f  
Church J  
BIRTHS  
Deaths, e  
THE PA  
a Family  
Canada, I  
CHANGE  
not only t  
also the c  
Discon  
received,  
tinue the  
dollars p  
RECEIP  
tion is pa  
postage s  
or four w  
CHECKU  
fifteen c  
POSTAL  
CORRE  
of the C  
than Fri  
Address:  
Phone  
Offices  
Subs  
PAID  
\$1.00.  
scriptic  
label o  
subscri  
NOT  
the UR  
advanc  
Sep  
Mornin  
Evenin  
Mornin  
Evenin  
Mornin  
Evenin  
Mornin  
Evenin  
Mornin  
Evenin  
Apr  
teent  
Alber  
the cl  
numb  
many  
SIX  
Hol  
Pro  
Off  
Chi  
Ger  
SEVI  
Ho  
Pro  
Off  
Ch  
Ge