

**THE
North American Life
Assurance Company**

1906.

INCOME \$1,746,544.00
An Increase over 1905 of \$86,480.00.
ASSETS 7,799,064.00
An Increase over 1905 of \$831,050.00.
NET SURPLUS 650,209.00
An Increase over 1905 of \$80,199.00.

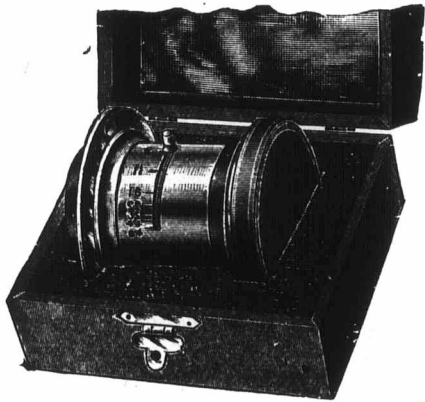
The large increase in these important items shows that the unexcelled financial position of the Company has been maintained during the year.

Correspondence invited regarding Agencies in unrepresented Districts.
HOME OFFICE, TORONTO, ONT.

Established 1875.

**E. SADLER
& SONS**

LENS CAP - - - -
MANUFACTURER



Enlarging Screens, Iso Screens, Lens Cases, Stop Cases, &c., &c.

**34 1/2 Great Hampton Street,
BIRMINGHAM, ENGLAND.**

Special prices to Canadians under the New Tariff.

Individual Evening Instruction

ON
MONDAY, WEDNESDAY AND FRIDAY EVENINGS
AT



Renouf Building, Cor. St. Catherine
and University Streets.

Book-keeping, Arithmetic, Penmanship Shorthand, Type-writing, Correspondence English, French, Civil Service, etc. Students select their subjects and are taught separately by nine expert teachers. Write, call or telephone Up 151 for Prospectus and new price list. Address:

J. D. DAVIS,

Renouf Building, Cor. St. Catherine
and University Sts., MONTREAL.

FLYNN BRO'S & CO.

MANUFACTURERS OF



**WROUGHT IRON and
COPPER GOODS...**

Art Metal Workers,

PAUL PRY WORKS,

**NEW SUMMER STREET,
Birmingham, - Eng.**

**OFFORD &
WILSON,**

Manufacturing

Electrical Engineers

98 Woodcock St. BIRMINGHAM, Eng.



Theatre

Lighting

Accessories

Complete Light Box set, with Lamp, Crutch, Condenser, and Mediums.

J. W. NICHOLSON & SONS.

MANUFACTURERS OF

**DOG COLLARS, WATCH
GUARDS & PURSES.**

Station Street. WALSALL, England.

Special Prices to Canadians under the New Tariff.

WALTER MIDDLETON ENGLAND

DIE SINKER, TOOL MAKER, STAMPER & PIERCER

STEEL NAME & LETTER PUNCHES, BRASS TOOLS FOR GILDING ON LEATHER & SATIN, CYCLE PLATES, BRANDS, TRAVELLERS' JEWELLERS' LETTERS, METALLIC CHECKS & LABELS, CLUB BADGES, WINE & BEER PUNCHES, DOOR PLATES, MARK & C

104, VYSE ST., BIRMINGHAM

The Feo

HEAD OF

Capital and Ass
Assurance writt
Paid Policyhold

H. RUSSELL P

**Ge
Be**

The Manuf

He

WAL

PEARL BUTTON
MANUFACTURER



BIRMIN

MUDGUARD

and C

The Wa

158 Hock