

ship, and now

DISKS.



FIG. 110.



FIG. 111.

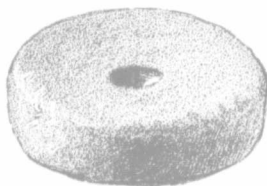


FIG. 112.

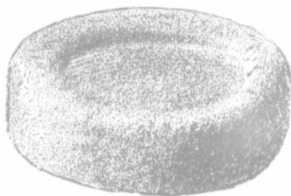


FIG. 113.



FIG. 114.

Disks of pottery and stone, like those shown in figures 110 to 113, were used in different ways. The smaller ones (figs. 110 and 111) may have been ornamental, as for beads, while it is known that the larger ones (figs. 112, 113) were used in a game. Figure 114 is from Hawaii, where it was employed by the natives in a game called Naika (Nah-eeek-ah,) being rolled along the ground as in what was a favorite Indian pastime. It is introduced here merely for comparison. A hole is shown in the centre, by mistake of the engraver.

TOTEM.

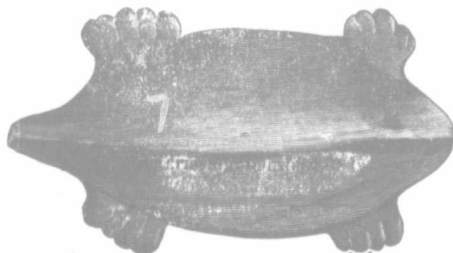


FIG. 115. (Full Size).

There can be little doubt that figure 115 was intended to represent a totem, and that totem, a turtle. Unfortunately both head and tail are damaged, but
4 (C. I.)

Mr. J. W. Fitz-
color. Accord-
Lindsay. The
made on each