

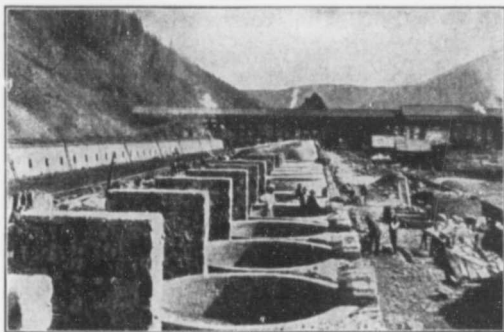
accommodate the early miners and to keep their gold from going across the line, the Dewdney Trail was constructed from Yale.

The valley known as Tobacco Plains is fertile and sparsely settled. Years ago it was employed by the Hudson's Bay Company as a winter range for their horses. From it a trail leads to the petroleum fields of the Flathead. Another trail into the same oil region starts at Elko. Both are well-worn paths used by the Kootenay Indians when they went to hunt buffaloes east of the Rockies. The principal seepage of oil, so far as known, is at Sage Creek where, near a spring of water, several pools are covered with a thick dark-green oil.

Crowsnest Pass Coal Mines.

simultaneously with railroad construction work, coal mining was started in the region of the Crowsnest Pass. When the railway reached Coal Creek, several thousand tons of coal were ready for shipment. Besides the colliery at Coal

The British Columbia Southern, or Crowsnest Pass Railway, crosses Southern Kootenay from east to west. In 1897,



TIPPLE AND COKE OVENS AT MICHEL.

Creek there are those at Michel and Morrissey. A fair estimate of the extent of the coal fields is two hundred and thirty square miles. One-half of the coal produced is made into coke at Fernie, Michel and Morrissey.