

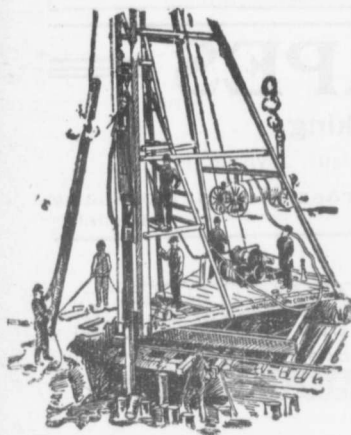
# The Canadian Bridge Co., Limited

WALKERVILLE, ONT.

MANUFACTURERS OF

## RAILWAY AND HIGHWAY BRIDGES

Locomotive Turn Tables,  
Roofs, Steel Buildings and  
Structural Iron Work of all descriptions



### Pile Driving

on land or water by Steam Pile Drivers or Drop Hammers.

Portable Boilers, Hoisting Engines, Pumping Machinery

To Let—bridge Building, Trestle Work, Wharves, Dams, Diving Submarine Work and General Contracting.

WM. HOOD & SON  
10 Richmond Sq. MONTREAL

### A NEW PAPER Civil Engineering, 6d.

"C. E. Contracts"  
"Engineering in the Colonies"  
185 Fleet Street, London, Eng.

### The Ontario Accident Insurance Co.

ACCIDENT, EMPLOYERS, ELEVATOR  
AND GENERAL LIABILITY . . . .

104 St. Francois Xavier St. Montreal

Established 1898

The Hanover Portland Cement Co., Ltd.  
Hanover, Ontario

Manufacturers of the Celebrated

"SAUGEEN" Brand of PORTLAND CEMENT

Prices on application. Prompt shipments.

### RAILS LOCOMOTIVES AND CARS

For Contractors, Switches, Gir-  
ders, &c.  
New and Second Hand.  
John J. Gartshore  
83 Front St. West.  
(Opposite Queen's Hotel.) TORONTO

### ELECTRICITY

If you desire to keep posted on  
the wonderful progress that is  
taking place in the use of elec-  
tricity for an almost endless var-  
iety of purposes, you should sub-  
scribe to the

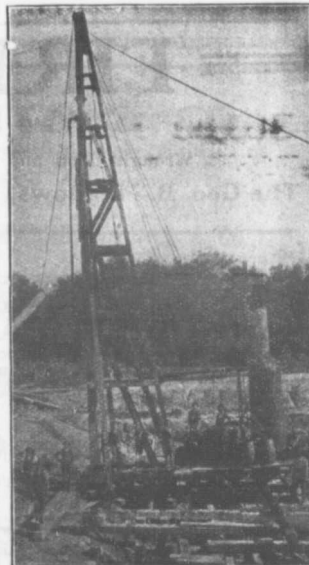
### Canadian Electrical News

and Engineering Journal  
A 44 PAGE MONTHLY.

PRICE \$1 PER YEAR

Write for free sample copy to

The G. H. Mortimer Publishing Co.  
LIMITED  
Toronto Montreal Winnipeg Vancouver



### PILE DRIVING

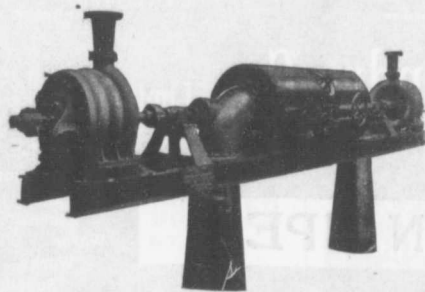
and Foundation Work.

By 5-ton Automatic Steam Pile Hammer,  
Water Jet or Drop Hammers, Dock Build-  
ing, Submarine Work and Dredging.

BUILDING MOVER AND WRECKER  
General Contracting.

JNO. E. RUSSELL, - Toronto  
Residence, 1010 Queen St. E.—Phone M. 4526  
Office and yard 307 Logan Ave.—Phone M. 2007

# PUMPS FOR WATER WORKS



Two Worthington 3-Stage Turbine and McCormack  
Water Wheels, built for Port Arthur, Ont. Water  
Works, 1440 gal. per minute against 350 ft. head.

### WATER WORKS SYSTEMS INSTALLED

Boilers, (Return Tube and Water  
Tube,) Tanks, Penstocks,  
Mill Machinery.

Builders in Canada of

### "WORTHINGTON" TURBINE PUMPS

The John McDougall Caledonian Iron Works Co.,  
Montreal. Limited.

Estimates Cheerfully Furnished

Montreal.

Limited.