

SIX

THE STAR, ST. JOHN N. B. WEDNESDAY, JUNE 16 1909

FREE TO MEN



Until Robust Health, Strength and Vigor is Regained.

Perfect Manhood. The man of courage, of strong heart, iron nerves, good health, self-confidence and undaunted energy. The embodiment of success, popular in every walk of life, respected and esteemed by all. Such is the manly man.

For forty years I have been making strong, vigorous men out of the puniest weaklings. A man comes to me weak, nervous, despondent and discouraged; with Drains, Losses, Impotency, Varicose, Rheumatism, Lame Back, Kidney or Stomach Troubles. I give him my world-famous Sanden Electric Belt, with its powerful, absolutely free, to use for two months. Mind you, not one penny in advance or on deposit. A few days' use convinces him that he has found the right remedy. It fills him with new life, joy, vigor and strength, and at the end of the time he is only too glad to pay me for the Belt and to recommend it to his friends.

This is the way I cure men. This is the way thousands every year regain their lost strength, without the slightest risk to themselves, for if I fail it costs you nothing whatever. You pay me only when cured, or, if you want to pay cash, full wholesale discount.

My great success has brought forth many imitations of my Belt, but my genuine knowledge, gained by forty years' experience, enabling me to guide and advise my patients, is mine alone and is given freely with the Belt.

Send me the coupon, and I will send you one and my two books on electricity and its medical use, which I send free, sealed, by mail.

DR. E. F. SANDEN.
140 Yonge St. Toronto, Ont.
Office Hours—9 to 6; Saturdays 9 till 5 p. m.

SKIPPER FIRES POINT BLANK AT TRAWLER

MONTREAL, N. B., June 15.—Trouble which has been brewing between French steam trawlers operating on Querebec Banks and the American, French and Newfoundland line fishermen has at last broken out, and a clash has taken place on the Querebec Banks in which revolvers and guns have been used. Yacow, which arrived here today from Querebec, of a sensational encounter between American fishing schooner Gardiner, Capt. Vincent Nelson and one of the French steam trawlers. The vessel had been watching for two days for a chance to set her lines and a clear place was at length found where none of the trawlers appeared in sight.

No sooner were her decks out than a large French trawler was seen to tear down towards them, and approached so near that it carried away part of Gardiner's fishing gear. The trawler made off, using leaden bullets made out of molasses and in place of the Frenchmen were in the act of pursuing their trawler, Capt. Nelson fired point blank at the steamer.

The result was almost disastrous to Capt. Nelson. In a way which he never expected, for as the shot was fired one of his decks, which was overhauling their lines between the Gardiner and the French trawler, was struck. Nelson, who was on the deck, was hit in the chest and the bullet from the gun which was fired from the trawler struck him in the chest.

It was almost fatal to him, but he was not killed. He was taken to the hospital and is now recovering. The French trawler, which was seen to fire the shot, was seen to fire the shot.

chibly elected from the steamer's deck. The following day a Newfoundland schooner had all of her fishing gear carried away and had to leave the banks and leave several days in order to obtain a new outfit.

Many captains of fishing schooners are indignant at having been prevented so often from setting their trawls owing to the presence on the shoal of these trawlers.

It is the opinion of many that violent encounters will surely take place during the summer months as a result of encroachment of steam trawlers on the grounds used by fishing schooners, and which threaten to seriously interfere with the pursuance of hand-line fishing on the banks.

A SCOTCH RING.

One of the Royal Jewels. It had a Melancholy History.

The traditional history of the Scotch regalia ring is of the most tragic, not to say melancholy, character. It is believed that it was the favorite ring of Mary Stuart, and that after her judicial murder in Fotheringhay castle it was transmitted to her son, James VI, who carried it to Scotland. It was played a distinct part. Once more did this ill-fated ring figure at an untimely and ill merited death, for, with almost his last breath upon the scaffold at Whitehall, Charles I. bequeathed it to Bishop Juxon in trust for his son.

In due course of time the ring came into the possession of James II, and was carried away with him on his flight to the continent. When, however, he was dethroned by the soldiers at Sherrin, the ring which had been secreted in the king's underclothing, only escaped robbery by the luckiest of mistakes on the part of the soldiers who searched him. Thus the ring was passed on unharmed to James' descendants till by request of Cardinal York it became the property of the reigning dynasty once more and was by them replaced among the royal jewels of Scotland, from which it had been separated for many a long year.—St. James' Gazette.

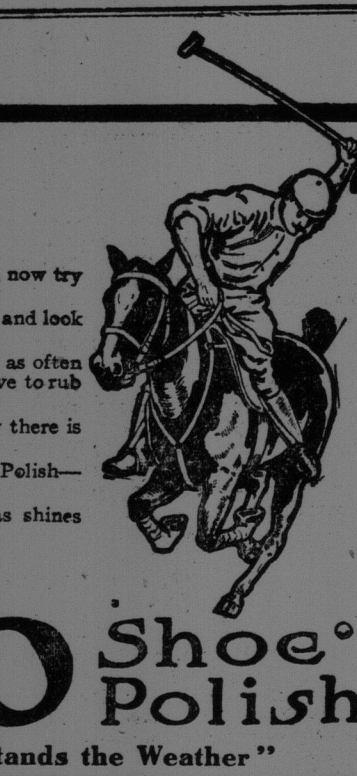
Polo Polish gives a bright, black shine to your shoes. BLACK mind you—not blue or grey.

You've probably tried the poor kinds, now try the best—Polo Shoe Polish. You'll find your shoes will last longer and look better while they last. You won't have to use POLO polish as often as you do other kinds and you won't have to rub so hard.

Polo Polish is firm paste—that is why there is no waste. Your grocer or shoeteller sells Polo Shoe Polish—in the biggest, cleanest tin of them all. Polo tan polish CLEANS, as well as shines the shoes.

LADIES LIKE IT

POLO Shoe Polish
"Good for Leather—Stands the Weather"



ST. JOHN BOY WAS FOURTH ON THE LIST

Standard of Empire Free Trip—C. H. MacDonald, of This City, One of the Winners.

TORONTO, Ont., June 15.—The Standard of Empire contest for a free trip of five weeks to the old country offered to high school and collegiate boys throughout the Dominion came to a close at noon today and the result was officially announced. The successful boys in the various districts are as follows: Winnipeg, H. E. Scott, Winnipeg College, 25,000 votes; Saskatchewan, Chas. W. Wellington, Moose Jaw Collegiate, 22,470; Western Ontario, W. C. McKee, Chatham Collegiate, 20,550; New Brunswick, C. H. MacDonald, St. John High School, 18,485; Eastern Ontario, Lorne Johnson, Ottawa Collegiate, 13,485; Quebec province, L. M. Holloway, Quebec High School, 13,110; Manitoba province, Leslie Wright, Russell School, 11,980; Toronto, Kenneth Coulter, Jarvis Street Collegiate, 11,950; Montreal, A. Lawrence, Montreal High School, 8,210; Nova Scotia, W. K. Wortman, Wolfville School, 7,600; Alberta, Howard Taylor, Edmonton High School, 6,400.

These eleven boys, accompanied by a Canadian physician and a manager of the Standard of Empire, sail in the Empress of Britain on July 16th. They will travel through England, Ireland, Scotland and Wales and will return on the Empress of Ireland on August 19th. During their travels they will be entertained at luncheon by Lord Roberts at his home in England.

C. H. MacDonald, of the Saint John High School, who has captured the Standard of Empire free trip to the old country, is a cutter for five weeks, 144, and resides on Harrison street. He is a member of this year's graduating class. He has worked industriously during the term and hopes to pass his exams without difficulty.

Young MacDonald sails on the Empress of Britain on July 16th and luncheon with Lord Roberts on July 23. The trip will last for five weeks. Cecil H. Carmichael was second in New Brunswick with 14,335 votes.

MRS. GOULD TIIPPED TO SOME EXTENT

Strong Language, Some Unfit for Print—Woman Undergoes Trying Ordeal.

NEW YORK, N. Y., June 15.—Torn with anger and crying hysterically, alternately flushing with shame, sobbing or clenching her hands on exasperation, Katherine Gould, wife of the late Senator, was today in the supreme court today at the continuation of her suit for a separation from her husband, the late Senator.

It was a day of testimony for the defense, during which Mr. Gould's attorney sought to bring out through witnesses who had been associated with Mrs. Gould that her habits were such that her husband was justified in leaving her. In the event of proving this, the defense hoped to undermine the charge of abandonment, the only phase of the plaintiff's case which has withstood the attacks of opposing counsel. Justice Dowling ruled out the charges of cruelty and non-support yesterday. Howard Gould himself may take the stand tomorrow.

Mrs. Gould having waived to testify, the matter of dress at Palm Beach and elsewhere, witnesses for the defense told the court that Mrs. Gould was the indulgent of the same woman of fashion in the matter of alcoholic stimulants, and that she had been guilty of certain remarks and conversations not exactly in line with the standards of a lady of her rank.

It was during this testimony concerning the alleged use of profane and profane language, some of it as related being too strong to be printed with propriety, that Mrs. Gould went mad. Yet, she recovered herself quickly and at times coached her lawyers, refreshing their minds on certain incidents with suggestions and reminders.

Specific statements that Mrs. Gould had been intoxicated on various occasions, that she called Howard Gould "my little hound" one night, that once she was apparently so under the influence of liquor as to stagger against the banister at Castle Gould, that her maid brought liquors to her room, and that she had been seen drinking breakfast, were brought out as employees of the Gould estate related on the stand their experiences with their former mistress.

BIG BOOM STRIKES SOUTH AFRICAN RAND

Prospects in New Colony More Never Better Since the Year 1895.

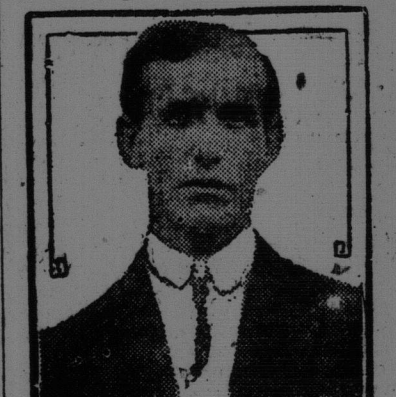
JOHANNESBURG, June 15.—After a long interval it is once more quite "boom time" in Johannesburg. It is generally agreed that prospects have never been so good since 1895. All classes of business are already feeling the effects of better times. Activity on the Stock Exchange is enormous, for the public have at last fairly "gone into it."

One feature of the moment is the immense amount of pegging of claims in the district surrounding Johannesburg. Thousands of claims allowed to lapse in times of depression have been taken up again, and many flotations are probable, but there are fears in some quarters that this may be overdone and produce a reaction.

The general view, however, is that the upward tendency will last. The

LEPER DEMANDS THAT DOCTORS AGREE OR THAT HE BE FREED

WASHINGTON, June 15.—"When doctors disagree," says John R. Early, the Washington "leper," who is under



JOHN R. EARLY. Imprisonment, "there is some hope for me."

Early has hired a lawyer and may demand his freedom from quarantine, imposed on him by the health department of Washington.

Dr. L. D. Thacker, a New York specialist in skin diseases, declares that Early is not a leper. He examined him, when the Washington health department wasn't looking. Thereby he made the health department mad.

"Early shows no signs of leprosy," says Dr. Bunsen. "There was an acute inflammatory condition of the skin, which is present in some persons who have labored in pulp mills, as Early did."

Dr. Ehlers, a Danish specialist in leprosy, looked Early over and declared that he was a leper.

Now Dr. Woodward of the health department, says he will keep a more strict watch over Early and not permit other doctors to examine him. "I won't be satisfied," says Early, "until I get the unanimous decision of many doctors. I know I haven't got the leprosy, and as long as one eminent physician agrees with me, it is wrong to keep me imprisoned."

Early's lawyer is considering the issuance of a habeas corpus action, in order to present to the courts a demand that medical experts get together and freely air their views in regard to Early's condition.

MANY MILLS AND HOUSES LAID WASTE

QUEBEC, June 15.—Forest fires are raging in Bonaventure county in the rear of the municipalities of Gascons, Port Daniel, Shigawake, St. Godroy, Paspébiac, New Charlevoix, Bonaventure, Capelin and New Richmond.

Hundreds of thousands of dollars in lumber have been destroyed. The fire was caused by a settler burning a thatched roof in the morning. The whole length of the river has been extended from the fifth to the thirteenth range. Many houses and barns owned by settlers have been destroyed. Many settlers have been driven from their homes. The fire was caused by a settler burning a thatched roof in the morning. The whole length of the river has been extended from the fifth to the thirteenth range. Many houses and barns owned by settlers have been destroyed. Many settlers have been driven from their homes. The fire was caused by a settler burning a thatched roof in the morning. The whole length of the river has been extended from the fifth to the thirteenth range. Many houses and barns owned by settlers have been destroyed. Many settlers have been driven from their homes. The fire was caused by a settler burning a thatched roof in the morning. The whole length of the river has been extended from the fifth to the thirteenth range. Many houses and barns owned by settlers have been destroyed. Many settlers have been driven from their homes. The fire was caused by a settler burning a thatched roof in the morning. The whole length of the river has been extended from the fifth to the thirteenth range. Many houses and barns owned by settlers have been destroyed. Many settlers have been driven from their homes. The fire was caused by a settler burning a thatched roof in the morning. The whole length of the river has been extended from the fifth to the thirteenth range. Many houses and barns owned by settlers have been destroyed. Many settlers have been driven from their homes. The fire was caused by a settler burning a thatched roof in the morning. The whole length of the river has been extended from the fifth to the thirteenth range. Many houses and barns owned by settlers have been destroyed. Many settlers have been driven from their homes. The fire was caused by a settler burning a thatched roof in the morning. The whole length of the river has been extended from the fifth to the thirteenth range. Many houses and barns owned by settlers have been destroyed. Many settlers have been driven from their homes. The fire was caused by a settler burning a thatched roof in the morning. The whole length of the river has been extended from the fifth to the thirteenth range. Many houses and barns owned by settlers have been destroyed. Many settlers have been driven from their homes. The fire was caused by a settler burning a thatched roof in the morning. The whole length of the river has been extended from the fifth to the thirteenth range. Many houses and barns owned by settlers have been destroyed. Many settlers have been driven from their homes. The fire was caused by a settler burning a thatched roof in the morning. The whole length of the river has been extended from the fifth to the thirteenth range. Many houses and barns owned by settlers have been destroyed. Many settlers have been driven from their homes. The fire was caused by a settler burning a thatched roof in the morning. The whole length of the river has been extended from the fifth to the thirteenth range. Many houses and barns owned by settlers have been destroyed. Many settlers have been driven from their homes. The fire was caused by a settler burning a thatched roof in the morning. The whole length of the river has been extended from the fifth to the thirteenth range. Many houses and barns owned by settlers have been destroyed. Many settlers have been driven from their homes. The fire was caused by a settler burning a thatched roof in the morning. The whole length of the river has been extended from the fifth to the thirteenth range. Many houses and barns owned by settlers have been destroyed. Many settlers have been driven from their homes. The fire was caused by a settler burning a thatched roof in the morning. The whole length of the river has been extended from the fifth to the thirteenth range. Many houses and barns owned by settlers have been destroyed. Many settlers have been driven from their homes. The fire was caused by a settler burning a thatched roof in the morning. The whole length of the river has been extended from the fifth to the thirteenth range. Many houses and barns owned by settlers have been destroyed. Many settlers have been driven from their homes. The fire was caused by a settler burning a thatched roof in the morning. The whole length of the river has been extended from the fifth to the thirteenth range. Many houses and barns owned by settlers have been destroyed. Many settlers have been driven from their homes. The fire was caused by a settler burning a thatched roof in the morning. The whole length of the river has been extended from the fifth to the thirteenth range. Many houses and barns owned by settlers have been destroyed. Many settlers have been driven from their homes. The fire was caused by a settler burning a thatched roof in the morning. The whole length of the river has been extended from the fifth to the thirteenth range. Many houses and barns owned by settlers have been destroyed. Many settlers have been driven from their homes. The fire was caused by a settler burning a thatched roof in the morning. The whole length of the river has been extended from the fifth to the thirteenth range. Many houses and barns owned by settlers have been destroyed. Many settlers have been driven from their homes. The fire was caused by a settler burning a thatched roof in the morning. The whole length of the river has been extended from the fifth to the thirteenth range. Many houses and barns owned by settlers have been destroyed. Many settlers have been driven from their homes. The fire was caused by a settler burning a thatched roof in the morning. The whole length of the river has been extended from the fifth to the thirteenth range. Many houses and barns owned by settlers have been destroyed. Many settlers have been driven from their homes. The fire was caused by a settler burning a thatched roof in the morning. The whole length of the river has been extended from the fifth to the thirteenth range. Many houses and barns owned by settlers have been destroyed. Many settlers have been driven from their homes. The fire was caused by a settler burning a thatched roof in the morning. The whole length of the river has been extended from the fifth to the thirteenth range. Many houses and barns owned by settlers have been destroyed. Many settlers have been driven from their homes. The fire was caused by a settler burning a thatched roof in the morning. The whole length of the river has been extended from the fifth to the thirteenth range. Many houses and barns owned by settlers have been destroyed. Many settlers have been driven from their homes. The fire was caused by a settler burning a thatched roof in the morning. The whole length of the river has been extended from the fifth to the thirteenth range. Many houses and barns owned by settlers have been destroyed. Many settlers have been driven from their homes. The fire was caused by a settler burning a thatched roof in the morning. The whole length of the river has been extended from the fifth to the thirteenth range. Many houses and barns owned by settlers have been destroyed. Many settlers have been driven from their homes. The fire was caused by a settler burning a thatched roof in the morning. The whole length of the river has been extended from the fifth to the thirteenth range. Many houses and barns owned by settlers have been destroyed. Many settlers have been driven from their homes. The fire was caused by a settler burning a thatched roof in the morning. The whole length of the river has been extended from the fifth to the thirteenth range. Many houses and barns owned by settlers have been destroyed. Many settlers have been driven from their homes. The fire was caused by a settler burning a thatched roof in the morning. The whole length of the river has been extended from the fifth to the thirteenth range. Many houses and barns owned by settlers have been destroyed. Many settlers have been driven from their homes. The fire was caused by a settler burning a thatched roof in the morning. The whole length of the river has been extended from the fifth to the thirteenth range. Many houses and barns owned by settlers have been destroyed. Many settlers have been driven from their homes. The fire was caused by a settler burning a thatched roof in the morning. The whole length of the river has been extended from the fifth to the thirteenth range. Many houses and barns owned by settlers have been destroyed. Many settlers have been driven from their homes. The fire was caused by a settler burning a thatched roof in the morning. The whole length of the river has been extended from the fifth to the thirteenth range. Many houses and barns owned by settlers have been destroyed. Many settlers have been driven from their homes. The fire was caused by a settler burning a thatched roof in the morning. The whole length of the river has been extended from the fifth to the thirteenth range. Many houses and barns owned by settlers have been destroyed. Many settlers have been driven from their homes. The fire was caused by a settler burning a thatched roof in the morning. The whole length of the river has been extended from the fifth to the thirteenth range. Many houses and barns owned by settlers have been destroyed. Many settlers have been driven from their homes. The fire was caused by a settler burning a thatched roof in the morning. The whole length of the river has been extended from the fifth to the thirteenth range. Many houses and barns owned by settlers have been destroyed. Many settlers have been driven from their homes. The fire was caused by a settler burning a thatched roof in the morning. The whole length of the river has been extended from the fifth to the thirteenth range. Many houses and barns owned by settlers have been destroyed. Many settlers have been driven from their homes. The fire was caused by a settler burning a thatched roof in the morning. The whole length of the river has been extended from the fifth to the thirteenth range. Many houses and barns owned by settlers have been destroyed. Many settlers have been driven from their homes. The fire was caused by a settler burning a thatched roof in the morning. The whole length of the river has been extended from the fifth to the thirteenth range. Many houses and barns owned by settlers have been destroyed. Many settlers have been driven from their homes. The fire was caused by a settler burning a thatched roof in the morning. The whole length of the river has been extended from the fifth to the thirteenth range. Many houses and barns owned by settlers have been destroyed. Many settlers have been driven from their homes. The fire was caused by a settler burning a thatched roof in the morning. The whole length of the river has been extended from the fifth to the thirteenth range. Many houses and barns owned by settlers have been destroyed. Many settlers have been driven from their homes. The fire was caused by a settler burning a thatched roof in the morning. The whole length of the river has been extended from the fifth to the thirteenth range. Many houses and barns owned by settlers have been destroyed. Many settlers have been driven from their homes. The fire was caused by a settler burning a thatched roof in the morning. The whole length of the river has been extended from the fifth to the thirteenth range. Many houses and barns owned by settlers have been destroyed. Many settlers have been driven from their homes. The fire was caused by a settler burning a thatched roof in the morning. The whole length of the river has been extended from the fifth to the thirteenth range. Many houses and barns owned by settlers have been destroyed. Many settlers have been driven from their homes. The fire was caused by a settler burning a thatched roof in the morning. The whole length of the river has been extended from the fifth to the thirteenth range. Many houses and barns owned by settlers have been destroyed. Many settlers have been driven from their homes. The fire was caused by a settler burning a thatched roof in the morning. The whole length of the river has been extended from the fifth to the thirteenth range. Many houses and barns owned by settlers have been destroyed. Many settlers have been driven from their homes. The fire was caused by a settler burning a thatched roof in the morning. The whole length of the river has been extended from the fifth to the thirteenth range. Many houses and barns owned by settlers have been destroyed. Many settlers have been driven from their homes. The fire was caused by a settler burning a thatched roof in the morning. The whole length of the river has been extended from the fifth to the thirteenth range. Many houses and barns owned by settlers have been destroyed. Many settlers have been driven from their homes. The fire was caused by a settler burning a thatched roof in the morning. The whole length of the river has been extended from the fifth to the thirteenth range. Many houses and barns owned by settlers have been destroyed. Many settlers have been driven from their homes. The fire was caused by a settler burning a thatched roof in the morning. The whole length of the river has been extended from the fifth to the thirteenth range. Many houses and barns owned by settlers have been destroyed. Many settlers have been driven from their homes. The fire was caused by a settler burning a thatched roof in the morning. The whole length of the river has been extended from the fifth to the thirteenth range. Many houses and barns owned by settlers have been destroyed. Many settlers have been driven from their homes. The fire was caused by a settler burning a thatched roof in the morning. The whole length of the river has been extended from the fifth to the thirteenth range. Many houses and barns owned by settlers have been destroyed. Many settlers have been driven from their homes. The fire was caused by a settler burning a thatched roof in the morning. The whole length of the river has been extended from the fifth to the thirteenth range. Many houses and barns owned by settlers have been destroyed. Many settlers have been driven from their homes. The fire was caused by a settler burning a thatched roof in the morning. The whole length of the river has been extended from the fifth to the thirteenth range. Many houses and barns owned by settlers have been destroyed. Many settlers have been driven from their homes. The fire was caused by a settler burning a thatched roof in the morning. The whole length of the river has been extended from the fifth to the thirteenth range. Many houses and barns owned by settlers have been destroyed. Many settlers have been driven from their homes. The fire was caused by a settler burning a thatched roof in the morning. The whole length of the river has been extended from the fifth to the thirteenth range. Many houses and barns owned by settlers have been destroyed. Many settlers have been driven from their homes. The fire was caused by a settler burning a thatched roof in the morning. The whole length of the river has been extended from the fifth to the thirteenth range. Many houses and barns owned by settlers have been destroyed. Many settlers have been driven from their homes. The fire was caused by a settler burning a thatched roof in the morning. The whole length of the river has been extended from the fifth to the thirteenth range. Many houses and barns owned by settlers have been destroyed. Many settlers have been driven from their homes. The fire was caused by a settler burning a thatched roof in the morning. The whole length of the river has been extended from the fifth to the thirteenth range. Many houses and barns owned by settlers have been destroyed. Many settlers have been driven from their homes. The fire was caused by a settler burning a thatched roof in the morning. The whole length of the river has been extended from the fifth to the thirteenth range. Many houses and barns owned by settlers have been destroyed. Many settlers have been driven from their homes. The fire was caused by a settler burning a thatched roof in the morning. The whole length of the river has been extended from the fifth to the thirteenth range. Many houses and barns owned by settlers have been destroyed. Many settlers have been driven from their homes. The fire was caused by a settler burning a thatched roof in the morning. The whole length of the river has been extended from the fifth to the thirteenth range. Many houses and barns owned by settlers have been destroyed. Many settlers have been driven from their homes. The fire was caused by a settler burning a thatched roof in the morning. The whole length of the river has been extended from the fifth to the thirteenth range. Many houses and barns owned by settlers have been destroyed. Many settlers have been driven from their homes. The fire was caused by a settler burning a thatched roof in the morning. The whole length of the river has been extended from the fifth to the thirteenth range. Many houses and barns owned by settlers have been destroyed. Many settlers have been driven from their homes. The fire was caused by a settler burning a thatched roof in the morning. The whole length of the river has been extended from the fifth to the thirteenth range. Many houses and barns owned by settlers have been destroyed. Many settlers have been driven from their homes. The fire was caused by a settler burning a thatched roof in the morning. The whole length of the river has been extended from the fifth to the thirteenth range. Many houses and barns owned by settlers have been destroyed. Many settlers have been driven from their homes. The fire was caused by a settler burning a thatched roof in the morning. The whole length of the river has been extended from the fifth to the thirteenth range. Many houses and barns owned by settlers have been destroyed. Many settlers have been driven from their homes. The fire was caused by a settler burning a thatched roof in the morning. The whole length of the river has been extended from the fifth to the thirteenth range. Many houses and barns owned by settlers have been destroyed. Many settlers have been driven from their homes. The fire was caused by a settler burning a thatched roof in the morning. The whole length of the river has been extended from the fifth to the thirteenth range. Many houses and barns owned by settlers have been destroyed. Many settlers have been driven from their homes. The fire was caused by a settler burning a thatched roof in the morning. The whole length of the river has been extended from the fifth to the thirteenth range. Many houses and barns owned by settlers have been destroyed. Many settlers have been driven from their homes. The fire was caused by a settler burning a thatched roof in the morning. The whole length of the river has been extended from the fifth to the thirteenth range. Many houses and barns owned by settlers have been destroyed. Many settlers have been driven from their homes. The fire was caused by a settler burning a thatched roof in the morning. The whole length of the river has been extended from the fifth to the thirteenth range. Many houses and barns owned by settlers have been destroyed. Many settlers have been driven from their homes. The fire was caused by a settler burning a thatched roof in the morning. The whole length of the river has been extended from the fifth to the thirteenth range. Many houses and barns owned by settlers have been destroyed. Many settlers have been driven from their homes. The fire was caused by a settler burning a thatched roof in the morning. The whole length of the river has been extended from the fifth to the thirteenth range. Many houses and barns owned by settlers have been destroyed. Many settlers have been driven from their homes. The fire was caused by a settler burning a thatched roof in the morning. The whole length of the river has been extended from the fifth to the thirteenth range. Many houses and barns owned by settlers have been destroyed. Many settlers have been driven from their homes. The fire was caused by a settler burning a thatched roof in the morning. The whole length of the river has been extended from the fifth to the thirteenth range. Many houses and barns owned by settlers have been destroyed. Many settlers have been driven from their homes. The fire was caused by a settler burning a thatched roof in the morning. The whole length of the river has been extended from the fifth to the thirteenth range. Many houses and barns owned by settlers have been destroyed. Many settlers have been driven from their homes. The fire was caused by a settler burning a thatched roof in the morning. The whole length of the river has been extended from the fifth to the thirteenth range. Many houses and barns owned by settlers have been destroyed. Many settlers have been driven from their homes. The fire was caused by a settler burning a thatched roof in the morning. The whole length of the river has been extended from the fifth to the thirteenth range. Many houses and barns owned by settlers have been destroyed. Many settlers have been driven from their homes. The fire was caused by a settler burning a thatched roof in the morning. The whole length of the river has been extended from the fifth to the thirteenth range. Many houses and barns owned by settlers have been destroyed. Many settlers have been driven from their homes. The fire was caused by a settler burning a thatched roof in the morning. The whole length of the river has been extended from the fifth to the thirteenth range. Many houses and barns owned by settlers have been destroyed. Many settlers have been driven from their homes. The fire was caused by a settler burning a thatched roof in the morning. The whole length of the river has been extended from the fifth to the thirteenth range. Many houses and barns owned by settlers have been destroyed. Many settlers have been driven from their homes. The fire was caused by a settler burning a thatched roof in the morning. The whole length of the river has been extended from the fifth to the thirteenth range. Many houses and barns owned by settlers have been destroyed. Many settlers have been driven from their homes. The fire was caused by a settler burning a thatched roof in the morning. The whole length of the river has been extended from the fifth to the thirteenth range. Many houses and barns owned by settlers have been destroyed. Many settlers have been driven from their homes. The fire was caused by a settler burning a thatched roof in the morning. The whole length of the river has been extended from the fifth to the thirteenth range. Many houses and barns owned by settlers have been destroyed. Many settlers have been driven from their homes. The fire was caused by a settler burning a thatched roof in the morning. The whole length of the river has been extended from the fifth to the thirteenth range. Many houses and barns owned by settlers have been destroyed. Many settlers have been driven from their homes. The fire was caused by a settler burning a thatched roof in the morning. The whole length of the river has been extended from the fifth to the thirteenth range. Many houses and barns owned by settlers have been destroyed. Many settlers have been driven from their homes. The fire was caused by a settler burning a thatched roof in the morning. The whole length of the river has been extended from the fifth to the thirteenth range. Many houses and barns owned by settlers have been destroyed. Many settlers have been driven from their homes. The fire was caused by a settler burning a thatched roof in the morning. The whole length of the river has been extended from the fifth to the thirteenth range. Many houses and barns owned by settlers have been destroyed. Many settlers have been driven from their homes. The fire was caused by a settler burning a thatched roof in the morning. The whole length of the river has been extended from the fifth to the thirteenth range. Many houses and barns owned by settlers have been destroyed. Many settlers have been driven from their homes. The fire was caused by a settler burning a thatched roof in the morning. The whole length of the river has been extended from the fifth to the thirteenth range. Many houses and barns owned by settlers have been destroyed. Many settlers have been driven from their homes. The fire was caused by a settler burning a thatched roof in the morning. The whole length of the river has been extended from the fifth to the thirteenth range. Many houses and barns owned by settlers have been destroyed. Many settlers have been driven from their homes. The fire was caused by a settler burning a thatched roof in the morning. The whole length of the river has been extended from the fifth to the thirteenth range. Many houses and barns owned by settlers have been destroyed. Many settlers have been driven from their homes. The fire was caused by a settler burning a thatched roof in the morning. The whole length of the river has been extended from the fifth to the thirteenth range. Many houses and barns owned by settlers have been destroyed. Many settlers have been driven from their homes. The fire was caused by a settler burning a thatched roof in the morning. The whole length of the river has been extended from the fifth to the thirteenth range. Many houses and barns owned by settlers have been destroyed. Many settlers have been driven from their homes. The fire was caused by a settler burning a thatched roof in the morning. The whole length of the river has been extended from the fifth to the thirteenth range. Many houses and barns owned by settlers have been destroyed. Many settlers have been driven from their homes. The fire was caused by a settler burning a thatched roof in the morning. The whole length of the river has been extended from the fifth to the thirteenth range. Many houses and barns owned by settlers have been destroyed. Many settlers have been driven from their homes. The fire was caused by a settler burning a thatched roof in the morning. The whole length of the river has been extended from the fifth to the thirteenth range. Many houses and barns owned by settlers have been destroyed. Many settlers have been driven from their homes. The fire was caused by a settler burning a thatched roof in the morning. The whole length of the river has been extended from the fifth to the thirteenth range. Many houses and barns owned by settlers have been destroyed. Many settlers have been driven from their homes. The fire was caused by a settler burning a thatched roof in the morning. The whole length of the river has been extended from the fifth to the thirteenth range. Many houses and barns owned by settlers have been destroyed. Many settlers have been driven from their homes. The fire was caused by a settler burning a thatched roof in the morning. The whole length of the river has been extended from the fifth to the thirteenth range. Many houses and barns owned by settlers have been destroyed. Many settlers have been driven from their homes. The fire was caused by a settler burning a thatched roof in the morning. The whole length of the river has been extended from the fifth to the thirteenth range. Many houses and barns owned by settlers have been destroyed. Many settlers have been driven from their homes. The fire was caused by a settler burning a thatched roof in the morning. The whole length of the river has been extended from the fifth to the thirteenth range. Many houses and barns owned by settlers have been destroyed. Many settlers have been driven from their homes. The fire was caused by a settler burning a thatched roof in the morning. The whole length of the river has been extended from the fifth to the thirteenth range. Many houses and barns owned by settlers have been destroyed. Many settlers have been driven from their homes. The fire was caused by a settler burning a thatched roof in the morning. The whole length of the river has been extended from the fifth to the thirteenth range. Many houses and barns owned by settlers have been destroyed. Many settlers have been driven from their homes. The fire was caused by a settler burning a thatched roof in the morning. The whole length of the river has been extended from the fifth to the thirteenth range. Many houses and barns owned by settlers have been destroyed. Many settlers have been driven from their homes. The fire was caused by a settler burning a thatched roof in the morning. The whole length of the river has been extended from the fifth to the thirteenth range. Many houses and barns owned by settlers have been destroyed. Many settlers have been driven from their homes. The fire was caused by a settler burning a thatched roof in the morning. The whole length of the river has been extended from the fifth to the thirteenth range. Many houses and barns owned by settlers have been destroyed. Many settlers have been driven from their homes. The fire was caused by a settler burning a thatched roof in the morning. The whole length of the river has been extended from the fifth to the thirteenth range. Many houses and barns owned by settlers have been destroyed. Many settlers have been driven from their homes. The fire was caused by a settler burning a thatched roof in the morning. The whole length of the river has been extended from the fifth to the thirteenth range. Many houses and barns owned by settlers have been destroyed. Many settlers have been driven from their homes. The fire was caused by a settler burning a thatched roof in the morning. The whole length of the river has been extended from the fifth to the thirteenth range. Many houses and barns owned by settlers have been destroyed. Many settlers have been driven from their homes. The fire was caused by a settler burning a thatched roof in the morning. The whole length of the river has been extended from the fifth to the thirteenth range. Many houses and barns owned by settlers have been destroyed. Many settlers have been driven from their homes. The fire was caused by a settler burning a thatched roof in the morning. The whole length of the river has been extended from the fifth to the thirteenth range. Many houses and barns owned by settlers have been destroyed. Many settlers have been driven from their homes. The fire was caused by a settler burning a thatched roof in the morning. The whole length of the river has been extended from the fifth to the thirteenth range. Many houses and barns owned by settlers have been destroyed. Many settlers have been driven from their homes. The fire was caused by a settler burning a thatched roof in the morning. The whole length of the river has been extended from the fifth to the thirteenth range. Many houses and barns owned by settlers have been destroyed. Many settlers have been driven from their homes. The fire was caused by a settler burning a thatched roof in the morning. The whole length of the river has been extended from the fifth to the thirteenth range. Many houses and barns owned by settlers have been destroyed. Many settlers have been driven from their homes. The fire was caused by a settler burning a thatched roof in the morning. The whole length of the river has been extended from the fifth to the thirteenth range. Many houses and barns owned by settlers have been destroyed. Many settlers have been driven from their homes. The fire was caused by a settler burning a thatched roof in the morning. The whole length of the river has been extended from the fifth to the thirteenth range. Many houses and barns owned by settlers have been destroyed. Many settlers have been driven from their homes. The fire was caused by a settler burning a thatched roof in the morning. The whole length of the river has been extended from the fifth to the thirteenth range. Many houses and barns owned by settlers have been destroyed. Many settlers have been driven from their homes. The fire was caused by a settler burning a thatched roof in the morning. The whole length of the river has been extended from the fifth to the thirteenth range. Many houses and barns owned by settlers have been destroyed. Many settlers have been driven from their homes. The fire was caused by a settler burning a thatched roof in the morning. The whole length of the river has been extended from the fifth to the thirteenth range. Many houses and barns owned by settlers have been destroyed. Many settlers have been driven from their homes. The fire was caused by a settler burning a thatched roof in the morning. The whole length of the river has been extended from the fifth to the thirteenth range. Many houses and barns owned by settlers have been destroyed. Many settlers have been driven from their homes. The fire was caused by a settler burning a thatched roof in the morning. The whole length of the river has been extended from the fifth to the thirteenth range. Many houses and barns owned by settlers have been destroyed. Many settlers have been driven from their homes. The fire was caused by a settler burning a thatched roof in the morning. The whole length of the river has been extended from the fifth to the thirteenth range. Many houses and barns owned by settlers have been destroyed. Many settlers have been driven from their homes. The fire was caused by a settler burning a thatched roof in the morning. The whole length of the river has been extended from the fifth to the thirteenth range. Many houses and barns owned by settlers have been destroyed. Many settlers have been driven from their homes. The fire was caused by a settler burning a thatched roof in the morning. The whole length of the river has been extended from the fifth to the thirteenth range. Many houses and barns owned by settlers have been destroyed. Many settlers have been driven from their homes. The fire was caused by a settler burning a thatched roof in the morning. The whole length of the river has been extended from the fifth to the thirteenth range. Many houses and barns owned by settlers have been destroyed. Many settlers have been driven from their homes. The fire was caused by a settler burning a thatched roof in the morning. The whole length of the river has been extended from the fifth to the thirteenth range. Many houses and barns owned by settlers have been destroyed. Many settlers have been driven from their homes. The fire was caused by a settler burning a thatched roof in the morning. The whole length of the river has been extended from the fifth to the thirteenth range. Many houses and barns owned by settlers have been destroyed. Many settlers have been driven from their homes. The fire was caused by a settler burning a thatched roof in the morning. The whole length of the river has been extended from the fifth to the thirteenth range. Many houses and barns owned by settlers have been destroyed. Many settlers have been driven from their homes. The fire was caused by a settler burning a thatched roof in the morning. The whole length of the river has been extended from the fifth to the thirteenth range. Many houses and barns owned by settlers have been destroyed. Many settlers have been driven from their homes. The fire was caused by a settler burning a thatched roof in the morning. The whole length of the river has been extended from the fifth to the thirteenth range. Many houses and barns owned by settlers have been destroyed. Many settlers have been driven from their homes. The fire was caused by a settler burning a thatched roof in the morning. The whole length of the river has been extended from the fifth to the thirteenth range. Many houses and barns owned by settlers have been destroyed. Many settlers have been driven from their homes. The fire was caused by a settler burning a thatched roof in the morning. The whole length of the river has been extended from the fifth to the thirteenth range. Many houses and barns owned by settlers have been destroyed. Many settlers have been driven from their homes. The fire was caused by a settler burning a thatched roof in the morning. The whole length of the river has been extended from the fifth to the thirteenth range. Many houses and barns owned by settlers have been destroyed. Many settlers have been driven from their homes. The fire was caused by a settler burning a thatched roof in the morning. The whole length of the river has been extended from the fifth to the thirteenth range. Many houses and barns owned by settlers have been destroyed. Many settlers have been driven from their homes. The fire was caused by a settler burning a thatched roof in the morning. The whole length of the river has been extended from the fifth to the thirteenth range. Many houses and barns owned by settlers have been destroyed. Many settlers have been driven from their homes. The fire was caused by a settler burning a thatched roof in the morning. The whole length of the river has been extended from the fifth to the thirteenth range. Many houses and barns owned by settlers have been destroyed. Many settlers have been driven from their homes. The fire was caused by a settler burning a thatched roof in the morning. The whole length of the river has been extended from the fifth to the thirteenth range. Many houses and barns owned by settlers have been destroyed. Many settlers have been driven from their homes. The fire was caused by a sett