

## No. 45.—M. GERMAIN CARON.

It was on the 26th July that we inspected the farm of M. Germain Caron, in the parish of St. Jean Port Joli, Trois Saumons, Pêlet county. It contains 64 arpents, of which 60 are arable, 4 non-arable, including an arpent in orchard, and a garden 24 x 60 feet. The soil is partly clay and partly sandy.

Rotation: First year, oats. Second year, oats with seeds on the land intended for pasture, and on that intended for meadow, oats. Third year, after oats, wheat, barley, with dung ploughed in, and grass-seeds—2 gals. mixed timothy and clover; he top-dresses his meadows with dung and ashes. The meadow stands 4 or 5 years, and the pasture 3 or 4 years. We deduct a mark from this item, because part of the land he ploughs gets no manure.

Division and fences, good; fields free from weeds. The house is excellent, and the barn, stable, cowhouse, piggery, granary, are all in good order.

The implements are well cared for, but there is not enough of them, so on this item we cut off 2 marks out of the 5 allowed.

Preservation and increase of manure perfect; full marks for this item. General order, good.

No accounts kept by M. Caron.

Ditches sufficiently numerous and kept well cleaned out. Besides the manures of the farm, M. Caron bought 150 bushels of ashes.

Stock: 3 brood-mares, 2 2-yr old colts; 1 bull, 7 cows, 2 of which are Canadian crosses, 1 butcher's beast, and 2 calves.

Crops:  $1\frac{1}{2}$  arpents of barley, 15 of oats, 3 of goudriole of oats and rye, 5 of potatoes, 14 in meadow, 24 in pasture,  $\frac{1}{2}$  in green-fodder-crop, and a garden of 24 x 60 feet.

We assigned 75.95 marks to M. Caron who is thereby entitled to a bronze Medal and a diploma of Great Merit.

## No. 46.—M. PIERRE LAGUEUX.

On the 28th of last July we visited the farm of M. Pierre Lagueux, of St. Romuald, Lévis containing 100 arpents, of which 80 are arable, 15 non-arable, 2 in bush, with a garden of 200 feet square. Soil partly heavy land and partly sandy.

Rotation: First year, after meadow, wheat, oats, buckwheat with seeds; part of the dung is ploughed in, the other part used as top-dressing; after pasture, oats, barley, pease with grass-seeds: he sometimes sows grain 2 years in succession and seeds with the second year's grain. The meadows stand 3 to 5 years, and the pasture 1 year. He only manures one fourth of his meadows, and pasture them 3 to 5 years. He ought not to plough more land than he can manure, and wrong in using half of his dung as top-dressing. For this he loses 1 mark.

The division of the farm is not perfect; we only allow him 1 mark out of the 2 for this item.

Fences, good.

Some weeds to be seen in the fields; we deduct 2 marks for this.

The house is good, and well suited to the wants of a family.

Barns, stable, cowhouse, cart-lodge, cupboards, henhouse, and piggery, are all very convenient and suited to the wants of the farm.

Not enough implements, so we deduct 1 mark from those allowed for this item.

The care and increase of the manure is good.

General management and regularity of order not too good.

Farm-accounts not perfect, only 2 out of 3 points accorded.

Permanent improvements satisfactory, as the marks allowed testify.

M. Lagueux's stock: 1 brood-mare, 2 work horses, 1 3-yr-old colt, 2 2-yr-olds, 1 yearling; 2 bulls, 9 cows, 3 fattening beasts, 2 2-year-olds, and 3 calves.

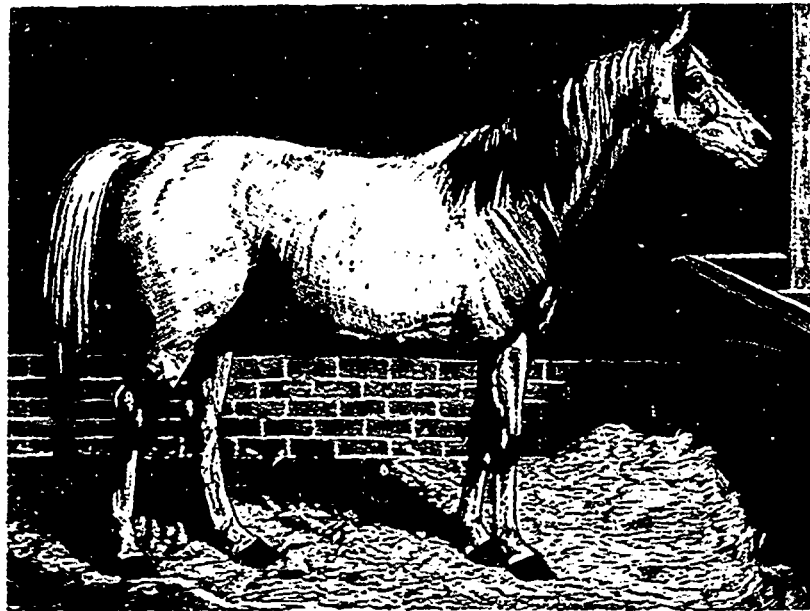
Crops: 2 arpents of barley, 20 of oats,  $1\frac{1}{2}$  of buckwheat, 1 of seed-timothy,  $\frac{1}{2}$  of flax, 3 of potatoes, 30 in meadow, 50 in pasture, 1 in green-fodder, 1 in orchard, and a garden of 200 feet square.

To M. Lagueux we assigned 75.70 marks, which gives him a right to a bronze medal and a diploma of Great Merit.

## No. 47.—M. VITAL TALBOT.

The 1st July last saw us at the farm of M. Vital Talbot, St. Norbert, Arthabaska, consisting of 137 acres, 75 of which are arable, and 21 non-arable, 40 in bush, 1 in orchard, with a garden 150 feet square. The soil is loam with a porous subsoil.

Rotation: First year, oats, pease, goudriole of pease and oats, wheat with interred dung and seeds, 2 gals. of timothy and 3 lbs. of alsiko clover to the acre. Second year, where the oats were,  $1\frac{1}{2}$  arpent of potatoes, the rest in wheat with interred dung and seeds. Third year, where potatoes were, wheat with seeds. He mows 4 to 8 years, and pastures 3 to 5 years. One



A TYPICAL ARAB STALLION.

part gets no manure, so we deduct a mark for this.

Division and fences, good; no weeds in the fields; The house is good, and suited to the requirements of a family. Barn, stable, cowhouse, sheepshed, piggery, granary, cart-lodge, are all in good order.

Implements of good kinds, well cared for, and plenty of them.

No shelter for the manure, so we took off a mark for the item, preservation and increase of manure.

General order, good.

M. Talbot keeps no books.

As to the clearing off of stones, and their utilisation, there were but few here, M. Talbot has carted into a heap about 1,500 loads of them.

Stock: 2 brood mares, 1 work-horse; 1 bull, 11 cows, 3 2-yr-old beasts, 2 calves; 1 ram, 6 ewes, and 4 lambs.

This year, M. Talbot has 2 acres of wheat, 6 of oats, 1 of pease,  $1\frac{1}{2}$  of buckwheat, 6 of goudriole,  $\frac{1}{2}$  of seed-timothy,  $\frac{1}{2}$  of flax,  $\frac{1}{2}$  of potatoes, 20 in meadow, 40 in pasture,  $\frac{1}{2}$  in green-fodder,  $\frac{1}{2}$  in orchard, and a garden of 150 feet square.

We assign M. Talbot 75.25 marks, which entitles him to a bronze-medal and a diploma of Great Merit.

## No. 48.—LOUIS NAP. CÔTÉ.

It was on the second day of last September that we found ourselves at the farm of M. Louis Napoléon Côté, of Bic, Rimouski. The farm contains 300 arpents, of which 80 are arable, 30 non-arable, 190 in bush, with a garden 75 x 80 feet. The soil is partly heavy land and partly sandy.

We do not approve of M. Côté's rotation, so we only give him 2 marks for this item. It is this: First year, oats, pease and oats mixed, tares and oats. Second year, barley after oats with seeds; where grew the gabourago, and the tares and oats, he sows oats with seeds. Hay is made as long as it yields well.

The division of the farm and the fences are all right; the fields are in good order and free from weeds.

The house is convenient and well suited to family occupation.

Barn, stable, cowhouse, sheepshed, piggery, although old-fashioned, are all in good order. There is also a good silo with which M. Côté is very well satisfied.

Implements nearly sufficient in number and well cared for.

One mark deducted for neglect of the preservation of the manure.

General order, good.

M. Côté only got 2 marks out of the 3 for book keeping, as his was not complete. For permanent improvements, he got 10 out of the 15 marks

he took up his abode there, having with him his aged father, his mother, his brother, his sister, then a widow, with her four children whom M. Louis Carlus supported.

In spite of the land being stony and cold, and seedtime there being very late, as a rule; by his talents, his industry, and his orderly life, he has become the model-farmer of the parish of St. Cyrille. None of his children have gone to the States; his two sons and two of his daughters are married, and live at St. Cyrille, the two sons helping their father to work the farm.

Rotation: First year, wheat, oats, pease, with seeds and interred dung where the land is poorest; the richer land gets no manure, it is only enriched by grazing. He leaves the meadows 3 to 4 years, and pastures them 4 or 5 years. We do not approve of M. Carlus' course, because he does not manure his best land, although he exhausts it as little as possible, only ploughing once, and then letting it lie for 4 or 5 years. However, if this system be pursued, the land will become exhausted soon enough. We advise M. Carlus, then, not to plough more land than he can find manure for.

The farm is well divided, and the fences are good. We took off 1 mark from the item, freedom from weeds, on account of some ox-eyed daisies we saw on the land.

The house is a good one, and well suited to the needs of a family.

Barns, stables, cowhouse, piggery, granary, sheds, are all in good order.

Implements sufficient in number, of good kinds, and well cared for.

Preservation and increase of manure perfect: full marks for this item.

General order, good. M. Carlus keeps no books.

Eight marks we allowed for ridding the land of stones and utilising them. The ditches we found sufficient and well cleaned out.

Stock: 1 brood-mare, 2 work-horses, 1 2-yr-old colt and 1 yearling; 2 bulls, 3 cows, 1 butcher's beast, 2 2-yr-olds, and 2 calves, 1 Shropshire ram, 8 cross-bred ewes, and 8 lambs.

Crops: 3 arpents of wheat, 18 of oats, 2 of pease, 1 of seed-timothy,  $\frac{1}{2}$  of flax, 3 of potatoes, 20 in meadow, 30 in pasture,  $\frac{1}{2}$  in green-fodder, and a garden of 1 arpent.

We gave M. Carlus 75.05 marks; he is therefore entitled to a bronze medal and a diploma of Great Merit.

## No. 50.—JOHN L. SMITH.

On the 7th of September, we paid a visit to the farm of Mr. John Smith, of New-Carlisle, Bonaventure. This farm contains 80 acres, 60 of which are arable, 20 non-arable, and 16 in bush. The soil is sandy.

The system of rotation is fair; we took off one mark, however, because Mr. Smith does not manure all the land he ploughs.

Rotation: First year, after meadow, oats, wheat; after pasture, oats, wheat, buckwheat, potatoes with manure. Second year, dung on the furrow worked in with the spring-tooth harrow, then oats; after the previous year's potatoes, he sows wheat, and seeds over the whole shift. Third year, on the land intended for pasture, oats again with seeds. He generally manures 7 or 8 arpents annually, and the rest in the following rotation. He mows 2 or 3 years, and pastures 2 or 3 years.

The farm is well divided, the fences in good order, and the land free from weeds.

The house is good, healthy, and

allowed.

Stock: 1 brood-mare, 1 work-horse, 1 registered Canadian bull, 10 cows, 3 of which are registered Canadian, and 7 half-bred, 2 registered 2-yr-olds, 11 young beasts, of which 3 are registered Canadian heifers, and a registered Oxford-down ram.

Crop: 8 arpents of oats, 1 of hay (?) 5 of tares and oats, 2 of buckwheat, 2 of potatoes, 22 in meadows, 50 in pasture, and a garden 75 x 80 feet.

We awarded M. Côté 75.15 points, which entitles him to a bronze-medal and a diploma of Great Merit.

## No. 49.—M. LOUIS CARLUS.

We, on the 25th of July, visited the farm of M. Louis Carlus, of St. Cyrille, Pêlet, containing 100 arpents, of which 89 are arable; the soil mixed clay and loam.

M. Louis Carlus is the son of a working-man; after having worked for some years with his father, he engaged himself to a farmer, and afterwards bought the farm he now occupies, which was then in bush. As he had spare time he went and cleared part of his land; he then built a house and a barn, and the next year