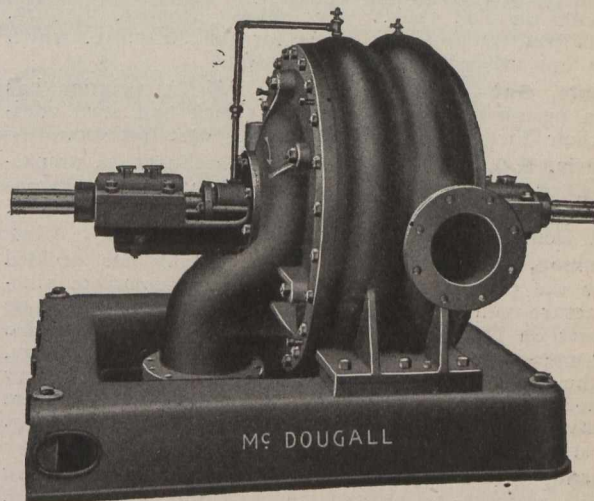


Worthington Turbine Pumps

The Worthington Turbine Pump is now accepted by the best engineers for all services where it is desired to deliver water against high heads. There is a limit to its application: but this limit is being continually widened by improved design, and at the present time the turbine pump is successfully employed for service where heretofore the reciprocating pump has been used exclusively.

Bulletin 110

gives a great many illustrations of these pumps driven directly by electric motors, steam turbines, steam engines and water wheels, as well as belted to the different forms of power, and will be sent on application.



Capacity 1217 Imperial or 1460 U.S. gallons per minute against 100 lbs. pressure. 150 H.P. 750 r.p.m. London, Ont.

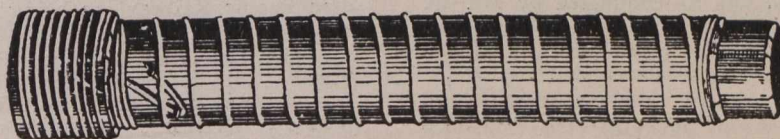
THE JOHN McDOUGALL CALEDONIAN IRON WORKS CO.

WORKS: 512 William Street,
MONTREAL.

LIMITED

Sales Offices: Montreal, Toronto, Cobalt,
Winnipeg, Calgary, Vancouver.

WOODEN WATER PIPE



Galvanized Wire Machine Banded Wood Stave Pipe
Continuous Stave Pipe

RESERVOIR TANKS

For City and Town Water Systems, Fire Protection, Power Plants,
Hydraulic Mining, Irrigation, etc.

MANUFACTURED BY

PACIFIC COAST PIPE CO. LIMITED

Factory: 1551 Granville Street, VANCOUVER, B.C.

P.O. Box 563.

Full Particulars and Estimates Furnished.