

THE FOUNDATION COMPANY

LIMITED

BANK OF OTTAWA BUILDING

MONTREAL, CANADA



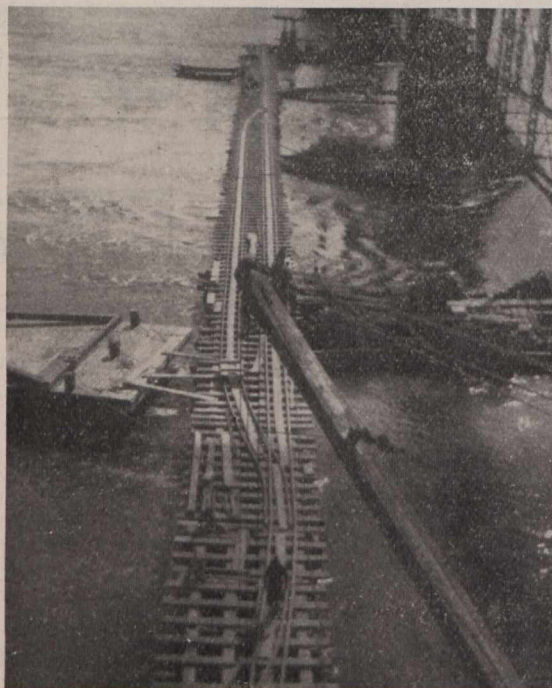
RECENT CONTRACT

C.P.R. St. Lawrence River Bridge

13 Existing River Piers, 2 Land Piers and 2 Abutments, all extended to twice their present length. Also 4 New River Piers.

Our Scope

BRIDGE PIERS,
MINING SHAFTS,
TUNNELS,
WATER POWER
CONSTRUCTION,
POWER PLANTS,
SEA WALLS,
WHARVES, QUAYS,
DAMS,
LIGHTHOUSES,
HEAVY BUILDING
FOUNDATIONS



Our Methods

PNEUMATIC
CAISSONS,
OPEN CAISSONS,
WOODEN
AND STEEL
SHEET PILING,
CONCRETE
PILES,
WOODEN PILES,
COFFER DAMS,
CONCRETE STEEL
CONSTRUCTION

We Invite Inquiries in Reference to Cost and Design of Difficult Foundation Work.