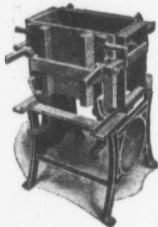


CANADIAN CONTRACT RECORD

*A Weekly Journal of Engineering, Public Works,
Tenders, Advance Information and Municipal Progress*



London

Facedown,
Combined,
Adjustable
Concrete



Block Machine

Makes every kind and design of block. All blocks made Face-down. All sizes of blocks made in the one adjustable mould. All sizes of blocks made on the one size pallet. Any size core desired can be used, which is withdrawn vertically and thus allowing all blocks to be made by the wet process, or with crushed stone in the body of the block.

Send for Catalogue No. 1. We make Brick Machines, Block Machines, Concrete Mixers, Sill and Lintel Moulds, Ornamental Post and Baluster Moulds, and a full line of Concrete Machinery. Ask for information, stating your particular line.

London Concrete Machinery Co.

Redan Street, London, Ont.

Largest exclusive Concrete Machinery Co. in Canada.

Canadian General Development Co.

Limited

(Societe Canadienne D'Ente prises Generales, Limited)

A Canadian Company organized to promote and develop for itself or other persons all commercial and industrial enterprises; to undertake the construction of all kinds of public, municipal and private works, and especially railways, tramways, water works, sewers, hydraulic and electrical installations.

The Company is supported and backed in Europe by nine of the strongest Banks, enabling it to carry through the largest undertakings, and to financially take an interest in Canadian enterprises.

The Company has a staff of competent and experienced engineers, and invites correspondence from municipal and private corporations, and from business men who require technical or financial assistance to plan, execute or construct any private municipal or public work.

ADDRESS ALL COMMUNICATIONS TO

BEAUDRY LEMAN, General Manager

3 Beaver Hall Square, Montreal

TEL. UP 4515

Cost of a Railroad Cut with Rand Drills

WITH PLANT		WITHOUT PLANT	
Hoist Runner	\$3.50	Eight Muckers	\$18.00
Drill Runner	3.50	Four Drillers	10.00
Fireman	2.50	Four Horses	12.00
Helper	2.50	Two Teamsters	4.50
Four Muckers	9.00		44.50
Teamster	2.25	Cost with Plant	29.25
Horse	3.00	Saving	15.25
Wood	2.00		
Int. & Deprec.	1.00		
	29.25		

A Saving of \$15.25 per day and double the yardage removed.

These two cuts were made in the same rock formation.

CANADIAN RAND CO., Limited
Montreal, Canada

TORONTO ROSSLAND WINNIPEG HALIFAX

Structural Steel

BEAMS AND OTHER SECTIONS
RIVETS, BOLTS, TWIN BUCKLES, ETC.
IMMEDIATE ATTENTION TO ENQUIRIES
DO NOT DELAY—SEND AT ONCE
GET OUR PRICES AND STOCK SHEETS
EVERY LITTLE HELPS
SEND US YOUR SPECIFICATIONS

By
Hamilton Bridge Works Co.
Limited
HAMILTON, CANADA