

What

"Soil Cultivation" is doing for Colorado

Just These:

It is reclaiming without the enormous expense of irrigation some of the richest farm lands on the earth—the mellow, sandy loams of Eastern Colorado, on the great Bijou Ranch in Elbert County. It is making Denver and other near-by cities sit up with wonderment at the rapid progress made by Colorado farmers who are following the system of "Soil Culture" taught by Mr. Campbell. It is making poor men wealthy. It is putting on the market at a low figure—\$8.50 to \$16.00 per acre—that rich and fertile Bijou Ranch—only 55 miles from Denver, 42 miles from Colorado Springs, and only 5 miles from Union Pacific or Rock Island Railroads. Here you can buy virgin soil, mellow and deep, which raises cereals, fruits, alfalfa, vegetables, sugar beets, melons, etc., etc. (See 20 inch corn in cut at right.) Here with 2 horses; 10 cows; 5 brood sows you can clear \$30 a year on an 80-acre tract.

A New Book Free

Don't make a move buying real estate near or far till you get our brand-new illustrated book—warm from the press—entitled, "The New Colorado." It answers the majority of your questions such as: How much money will you need to have to get a

start; what the climate is, the rainfall, the soil; how near water is to the surface; how long you'll need to wait for profits; cost of coal, wood; nearness of schools, churches, etc., etc.

This book is not old, rehearsed information, but is compiled from fresh, live facts recently obtained from new settlers and old timers on this ranch.

"Hurry to Colorado" and get a good choice of the fertile lands. Now's your opportunity. Don't treat it lightly. Send for the free book now and decide. Address, Dept. 12.

The Farmers Land & Loan Co.,
145 LaSalle St., Chicago, Ill.



The Maple Leaf Gold Sheaf Harvest Tools



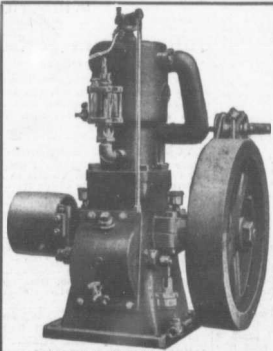
These tools are tempered by the same process used in the tempering of the famous Maple Leaf Axes. They are the best goods of the kind ever offered to the Canadian public. Every tool is warranted. Handles made of best second-growth white ash. It pays to use the best. If your merchant has not got them, send to the

Maple Leaf Harvest Tool Co., Ltd., Tillsonburg, Ont.

who are the manufacturers. None genuine that do not have the Gold Sheaf on the label

J. C. DIETRICH, President.
C. J. SHURLEY, Vice-president.

F. D. PALMER, Treasurer
C. K. JANSEN, Secretary



SOMETHING DIFFERENT

A stationary engine built like an automobile motor . . .

THE SIMPLEST AND LIGHTEST MACHINE ON THE MARKET

Economical in use of fuel.
Easy starting.
Speed changeable while engine is running.
Designed specially for farm and shop use.

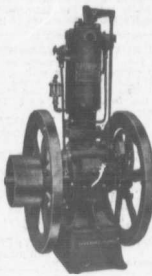
CUSHMAN MOTOR CO.
LINCOLN, NEBR., U.S.A.

3 h.p. Weight 200 lbs.

It is desirable to mention the name of this publication when writing to advertisers.

Have a FAIRBANKS-MORSE

GASOLINE ENGINE on the Farm



There are 70,000 satisfied users, and the up-to-date farmer finds them invaluable. With this well-constructed reliable machine you will do nearly all your farm work cheaply and easily. You can depend on them working when you want them to. You cannot get anything better to furnish power for pumping, threshing, feed grinding, churning or filling the silo. Write to-day on coupon below for catalogue and copies of testimonials.

The Canadian Fairbanks Co.

LIMITED

Montreal, Toronto, St. John, Winnipeg, Calgary, Vancouver

THE CANADIAN FAIRBANKS CO., Limited,
444 St. James Street, Montreal, Que.

Please send catalogue and copies of testimonials.

Name.....

Address.....

\$1,500

Will be Paid to Any Person

Who within one year will send us 1,000 New Subscriptions to The Canadian Dairyman and Farming World at \$1.00 a year; or, we will pay the following sums to any person who within one year secures the number of New Subscriptions mentioned:—

\$1,200 for 850 new full year subscriptions	\$300 for 250 new full year subscriptions
\$1,000 for 750 new full year subscriptions	\$150 for 150 new full year subscriptions
\$900 for 700 new full year subscriptions	\$80 for 100 new full year subscriptions
\$700 for 550 new full year subscriptions	\$35 for 50 new full year subscriptions
\$500 for 400 new full year subscriptions	

Should you be unsuccessful in securing even a list of 50 New Subscriptions, we will pay you a liberal commission on all subscriptions that you do secure, from 1 up to 50. You therefore cannot lose on this proposition. We positively agree to pay this commission, and the prizes mentioned above, to any one who secures the new subscriptions to entitle him to the same. We require, however, that all subscriptions taken must be new, and secured at the full subscription price of \$1.00 a year.

Remember that The Canadian Dairyman and Farming World is the only Farm Paper in Canada, published weekly at One Dollar a year. It is a splendid canvassing proposition.

Send a Post Card for Sample Copies and Full Particulars

Address:—CIRCULATION DEPARTMENT

THE CANADIAN DAIRYMAN AND FARMING WORLD
PETERBORO, ONT.

It is desirable to mention the name of this publication when writing to advertisers.