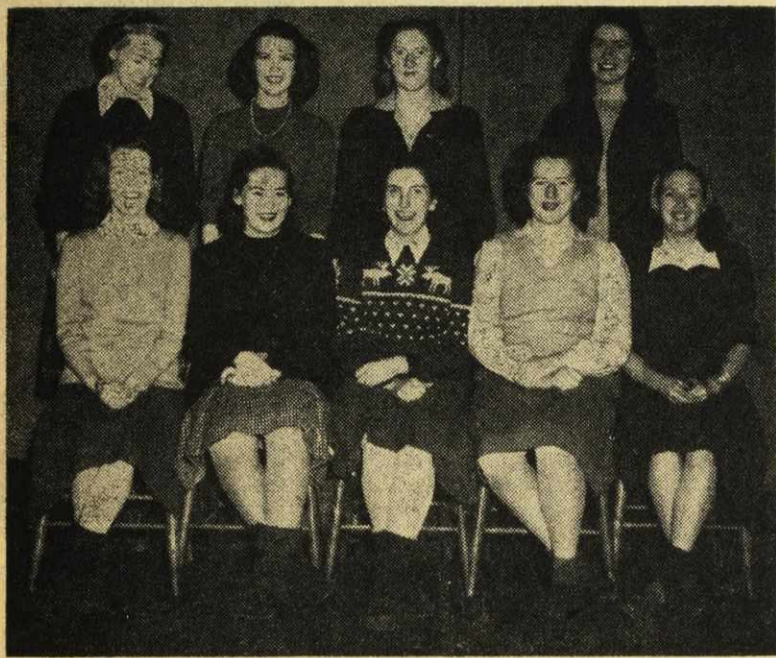


# Delta Gamma's Executive Report Busy Year; Girls Active in Campus Affairs



Pictured above is Delta Gamma's slate of officers for 1945-46. From left to right they are: Front row: Mary Macdonald, senior representative; Virginia Phillips, President of the D.G.A.C.; Connie Archibald, President of Delta Gamma; Lois Rattie, Secretary-Treasurer of Delta Gamma, and Elizabeth Reeves, debating manager. Back row: Mollie Schwartz, social manager; Kaye MacLean, social manager; Louise Jodrey, junior representative, and Terry MacLean, dramatics manager. Absent from the picture were Irene Robinson, freshette representative, and Anne Matchett, sophomore representative.

ONCE AGAIN DELTA GAMMA has quite an active year to its credit. The year started with an Open House the proceeds from which were given to the Community Chest. They amounted to \$40.00. Every effort was extended to make this a successful dance, even to having a small Dalhousie Tiger which went to the winners of the elimination dance. The girls also made voluntary contributions through banks placed in the Girls' Common Room and Shirreff Hall.

There has not been as much done this year as last in the line of debating. One team, composed of Liz Reeves, Terry MacLean and Lois Rattee has entered interfaculty

competition. Arrangements are also being made for a debate with Mount St. Bernard to be held here at Dalhousie.

### Also One-Act Play

Delta Gamma is also entering a one-act play, "World Without Men", in the Connolly Shield competition. Dramatics has been capably managed this year by Terry MacLean, who started early in the year to gather her cast.

At a Students' Council Meeting last October, it was decided that a committee should be appointed to investigate the properties, etc. of the Glee Club and submit recommendations to the Council as to how the properties in the Glee Club could be improved, and it seemed to be the wish of the Council that Delta Gamma should shoulder this task. Consequently, the executive of Delta Gamma elected a Committee, consisting of Irma MacQuarrie, Thora Reid, Christine Irvine and Connie Archibald, who carried out the task successfully and submitted worthwhile recommendations to the Council.

### Big Venture Co-ed Week

However, Delta Gamma's biggest venture this year was Co-ed week, which has just finished. It was the first Co-ed week Dalhousie has had. Little more need be said than has already been said in this issue. Much of the credit for the success of this week should be given to the President, Connie Archibald, for it was chiefly her enthusiasm and drive that kept the plans rolling smoothly.

### Vox Discipuli

(Continued from page 3)

Louise Jodrey: In my opinion Sadie Hawkins' week is a wonderful institution. Even when it's called Co-ed Week it's still refreshing. There's only one way I can convey to you my ideas on the situation, and that is by the following poem (?). Sadie Hawkins, the week of weeks, The time when the drips get asked out by the freaks, When a whole year's knitting and magazine reading Are lost in elation of total succeeding; The girls with the steadies can then take a rest, And make room for their sisters, who with less are blest. In fact, all complexes are passed to the breezes, While their owners replace them with masculine squeezes.

## Personalities In Delta Gamma

Sheila Currie: "Hefto" as she is fondly known, is a freshette and a former H.L.C. girl. She is girl's ping pong manager, has lots of initiative, an eye for fun, plays good ground hockey, badminton, and is good at most sports.

Jan Gillis: A willing and able worker, Jan cheerfully gives a lot of her time helping the Glee Club with costumes, make-up, refreshments, etc. Graduating this year in Arts, Jan's sincere interest in Dal affairs will be very much missed next year.

Pat Jones: An outstanding player at most sports, Patsy leads the field in basketball and ground hockey, being a star forward on both teams. Pat is also sports manager for the soph. class.

Pat MacKinnon: Fun-loving and vivacious, "Feel-my-muscle" MacKinnon is a Freshette who is really going places. Taking Pre-Med, at present her interests lie in that certain Com. student.

Anne Matchett: An Arts student hailing from New Brunswick, Anne is on the House Committee at Shirreff Hall, and is Soph. representative on Delta Gamma executive. "Petite and fair" her size didn't hinder her from being a hard-fighting left-winger on this year's ground hockey team.

Joan Murray: Joan is noted for her golden tresses and a star sapphire ring from a certain Tech man. She is on the Co-ed Week committee and as such she is one of those responsible for making Dalhousie's first such event a great hit.

Liz Reeves: Last year's C.U.P. editor and this year's vice-president of the Glee Club is a Sydney girl with plenty of ability. Liz is also debating manager for Delta Gamma.

Molly Schwartz: Always charming and gracious, Molly has been busy this past week helping with co-ed week activities and selling tickets to the various functions. Molly is taking Science and is special chairman for Delta Gamma.

Barbara White: A senior in Science and enthusiastic skier. Bobby comes from Sussex, New Brunswick. She has a lovely face and figure and loads of talent, always depended upon to add a touch of glamour to the Glee Club shows.

Nita Sederis: Well known to everyone as one of the hardest workers around Dal, Nita is very active in the Glee Club, having taken an important role in the "Merchant of Venice" as well as in last year's three-act play. She is also one of the circulation managers for THE GAZETTE, badminton manager in the D.G.A.C. and an enthusiastic member of Alpha Gamma Delta fraternity.

### McGosh Unearths

(Continued from page 3)

on his typewriter. The situation was desperate. And so, the lassies, forlorn, and bewildered, wended their way back to the cold, damp corridors of The Hovel.

### Bubble, Bubble, Toil and Trouble

That night, over a cauldron of hot broth, the girls devised the hideous plan of Co-ed Week, adopting every sly trick and manoeuvre at their command. Next morning, President Auto was beaten into submission with a revolver butt and forced to affix his moniker to a gigantic proclamation. And that is how Co-ed Week came about.

And now friends, the shadows darken and we must regretfully take our leave of Marmalade Hovel, its charming inhabitants and its storied past. Soon the week's festivities will draw to a close. Soon Cunning Itchybald will return to her knitting needles; Mimi Madonna will rewrite the minutes of Stilta Gamma; Lozeng Mousie will prepare a financial report for the "Culture Group" and Izzy Walnut will complete her survey of the wheat germ.

However, the girls will go about their tasks with lively gusto and renewed hope. For Co-ed Week is an annual affair.

## Constitution Amended at Fall Meeting; D. G. A. C. -- Separate Organization

RADICAL CHANGES and improvements in the Delta Gamma Constitution were voted on during a general meeting of the society held last term at Shirreff Hall. The following amendments were adopted:

(1) Amended the constitution so that the secretary-treasurer does not necessarily become president the following year, as was previously the rule, and that she automatically become nominated for president, along with other nominations from the floor.

(2) Amended the constitution further so that the secretary-treasurer and president shall be elected in the Student Council Elections rather than just at a general meeting of Delta Gamma.

(3) Lastly amended the constitution so that Delta Gamma and D.G.A.C. (Dalhousie Girls' Athletic Club) become two entirely separate distinct organizations with separate secretary-treasurers in comparison with one for both as previously, and so that the vice-president of Delta Gamma not necessarily is president of D.G.A.C. as was the case before.

### Reasons Given

Following are the reasons given by the executive for proposing these amendments:

(1) For the secretary-treasurer to become president the following year is quite a binding proposition. She might be inefficient as secretary-treasurer, and then her becoming president the following year might prove disastrous for the society. However, she should be nominated for president, since by her position as secretary-treasurer she has gained a fund of experience which makes her a good choice for nominee.

(2) Since Delta Gamma includes all the girls at Dalhousie, the major offices, president and secretary-treasurer, should be voted on in the Student Council Elections, since practically all the girls vote in that thus making a more representative vote.

(3) There had never been any real advantage to having Delta Gamma and D.G.A.C. connected in such a way as pointed out in the previous paragraph. And there were several disadvantages:

(a) Very strenuous being secretary-treasurer of both organizations. Also secretary-treasurer of Delta Gamma may have little or no interest in D.G.A.C. and vice versa.

(b) Vice-president of Delta Gamma had only one interest—D.G.A.C. (and rightly so, since it is a full time job!) and thus was helpful to Delta Gamma in no other way.

(c) D.G.A.C. is such a large organization that it need not be part of another, but should be complete in itself.

### Introducing . . .



### . . . Kaye MacLean

KAYE arrived in New Glasgow in 1926 and attended public and later High School there. She won a Regional Scholarship in Grade XI—a forerunner of later scholastic attainment at Dal (a mere four first's in the Christmas exams). Kaye didn't accept this scholarship but waited till the fall of '44 to register at Dal. After being at Shirreff Hall for one term she took up residence in the city, and this year she has returned to the fold.

Elected to Delta Gamma executive as Social Chairman for the Hall, Kaye has been largely responsible for the outstanding success of this year's Open Houses. In fact her influence has been felt in every phase of Delta Gamma's activity since she came to Dal. Besides her Delta Gamma interests and Commerce studies she finds time for active membership in Pi Beta Phi and seeking Pharos subscribers. Kaye claimed we would not have anything to write about if we presented her but we seem to have done all right. Efficient, conscientious, and the kind of a girl you really like to know.

### Rules for Wimmin

1. Treat all men gentle-like. Lull their suspicions.
2. Light their cheroots.
3. Offer THEM a chaw — don't wait to be asked.
4. Take any books men happen to be a-carryin', but no fair sellin' them cheap.
5. Give 'em yore seat in the Gym store but don't rope 'em down.
6. Buy 'em cawfee but don't put strichnine in it.

—THE UBYSSSEY.

## Dear Diary--

(Continued from page 3) for Wednesday. Tell you about it Wed.

'Bye, now.

### January 23—Wednesday

DEAR Diary: Just got back from the show at the Chem theatre, History Is Made At Night starring Charles "Meet-Me-At-The-Casbah" Boyer (Oh, so smooth!). Nice time! Whether or not history is made at night remains to be seen (?) but it's certainly true that history is to be STUDIED this nite by me, history and latin and everything I've been neglecting all week so good-nite.

### January 24—Thursday

WHAT a night! I'm completely exhausted, but what a wonderful way to get tired! I haven't stopped going since dinner. All the girls at the Hall had been tearing around looking for this or that to complete their costumes and everything at the last minute and I'm no exception. I had had a costume all ready to wear; at the last minute I decided it wasn't strictly enough "Dogpatch" so I started to get a costume together. I ended up wearing my old plaid shirt with a skating skirt which was indeed no Dogpatchier than the costume I originally planned to wear. I called for my date in grand style, dragging behind me a small sled, which I had confiscated from one of the neighbours for the purpose of transportation to the dance, and carrying in my hand the most appropriate corsage I could buy—two carrots, an onion, and a leaf of lettuce tastefully arranged and tied with a white shoelace. I was a bit nervous about it matching his costume and was very relieved to find him waiting in a yellow plaid shirt which couldn't be better, considering the color of the aforesaid corsage. Once we arrived at the gym, I proceeded to help my date off with his coat and overshoes. We then went into the main gym where everyone was busily engaged in the Lil' Abner's Trot. Everybody looked pretty much alike in plaid shirts, etc. although there were a few outstanding costumes. It was a marvellous dance, what with the girls arranging the programmes. I took my date to his home on my little sled and then coasted back to the hall, five minutes late (punishment: night phone duty) but in the best of spirits. The week has really been wonderful. It's not officially over yet; three one-act plays are being presented in the gym to-morrow night; oh, my gosh, I haven't asked yet! I think I'll call someone right now. It's just about 2 a. m. but I think he's got understanding parents. After all, this is co-ed week. I'd better rush. So long, till to-morrow.

"May I kiss you? May I please kiss you? Say are you deaf?" "No. Are you paralyzed?"

### Co-ed Chatter

Nicholson and Alex Hickman as their partners.

Sadie Hawkins had her coming out party at Shirreff Hall Saturday night, and we saw all kinds of people of which we might mention Alex Stewart and Mary Farquhar; Terry and Creighton; Zen and Nancy C.

### After Any Show or . . . Before Any Meal

Think of . . .

### The Green Lantern

### Corsages

A "Colonial" Corsage designed by ROSEDALE, speaks eloquent volumes of tenderness and love.



### "Birks Challenger Watch Time"

Many times you have heard these words over the radio.

Aren't you a little curious to see a Challenger? This is not an invitation, it's a dare to come in and resist one.

### Henry Birks and Sons Limited

Registered Jewellers American Gem Society Barrington St. - Halifax



# Mighty welcome

Drink

# Coca-Cola

The Coca-Cola Company of Canada, Limited, Halifax