

Alberta Culture and Artisan 78 opens new season of SU Art Gallery

This week the Students' Union Art Gallery starts its eleventh season. The art gallery has had troubled years in the past, but now, with the recognition of other galleries and the national museums of Canada, it has achieved an important and stable position within Canada's art community.

The art gallery first began when the Students' Union Building was opened in 1968. From then until 1972, it operated as a Class A gallery, which is the highest rating a gallery can be given. It was at that time comparable to the Edmonton Art Gallery. Its exhibitions were significant, many of them coming from the National Gallery in Ottawa. In 1972 it was closed as a Students' Union service. At this time it was rented out on an ad hoc basis to interested groups who used it for their exhibitions. Following this, the gallery lost as much as 40% of its space, as it was divided into three areas: a music listening section, an arts and crafts studio, and an exhibition gallery. In 1975 the gallery was reopened and the arts and crafts director assumed responsibility. Since that time it has been growing strongly in terms of exhibitions, attendance, reputation and the size of its budget.

Joan Borsa is the current director of the SU Art Gallery. She holds a Bachelor of Arts degree from the University of Saskatchewan, and a graduate degree in Art Education from the University of Alberta. After a short time teaching in Alberta high schools, she commenced her job with the art gallery. She has been director since 1976.

When Borsa first started, submissions were few so the gallery filled in with exhibits from the university's Department of Art and Design. The caliber of these exhibits was high, but there was little variety from show to show. Now, that problem has been solved because many Canadian artists are submitting works.

Most of the exhibits are from Western Canada, and the artists submitting are good enough to have their work featured in the Edmonton, Winnipeg, and Vancouver Art Galleries. There are also submissions from artists who have finished their formal training and have had little experience exhibiting, though the quality of their work is high.

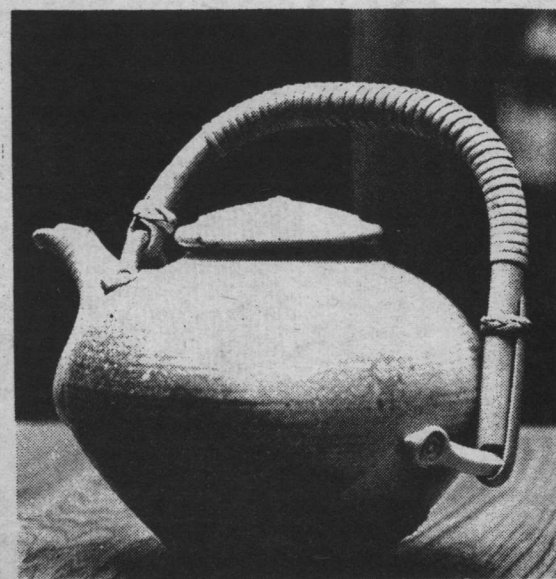
Borsa spoke about why she felt art galleries and art were important: "Because people are important and life is important. Art is a reflection of the human condition. I think things like art galleries, art exhibits, plays, any kind of performing art, literature... I think it's all doing the same thing, reaching something within us."

The SU Art Gallery's eleventh year was officially

opened Tuesday evening by the Alberta Minister of Culture, Mary Le Messurier. The ceremony marked the first time the gallery has been awarded with an Alberta Culture Grant. It was also the opening of *Artisan 78*, the art gallery's first exhibit of the 1979-80 season.

Artisan 78 is the first travelling national exhibition of contemporary Canadian crafts. It runs from September 4 to 23 and is a collection of 122 pieces consisting of ceramics, textiles, metal, glass, wood, paper and leather. The exhibition is designed to show the difference in quality between the crafts of professional and commercial artists.

The art gallery, located on the main floor of the Students' Union Building, plans three more shows this term. The second show features Jim Davies and Doug Dunford, two graduates from the university's Fine Arts faculty. The third show is a group drawing exhibit by five well-known prairie artists, and the fourth show features Swiss photography from 1840 to the present. In December the gallery closes out the first term with its big annual Christmas Craft Exhibition and Sale.



By Russ Sampson

Studio Theatre Stage '80: classic meets modern

By Jeff Wildman

Studio Theatre presents a first-rate calibre of theater free to students. Students, and new students especially, should note that upon presentation of their I.D. card at the Drama Office (3-146 Fine Arts Centre), they are entitled to a free ticket for any of the theater's productions.

The verve and energy of Bachelor of Fine Arts theatre people, when guided by the sure and able hands of this year's directors, should produce some excellent productions. Various are the offerings in this season's showcase which includes theater classics like Pinter's *The Birthday Party*, and award-winning modern works like the season's opener, Mark Medoff's *When You Coming Back Red Ryder*. The other plays are recent works by Canadian playwrights, *The Murder of August Dupin* by Ben Tarver and *The Shipbuilder* by Ken Mitchell, an ancient Greek tragedy by Euripides, and G.B. Shaw's play, *Misalliance*. All of these plays will prove a challenge for the versatility of the students who mount and, for the most part, perform the productions.

Stage '80 season opens October 18 with the Medoff play, *When You Coming Back Red Ryder*, directed by Thomas Peacocke. The Shaw play, *Misalliance*, opens November 29, and is the first of two

plays to be directed by Northern Light Theatre's artistic director, Scott Swan.

In the new year, two personal favorites come together in the form of Harold Pinter and Henry Woolf. Woolf will direct *The Birthday Party*, opening February 7. Scott Swan returns to direct the March 18 - April 13 run of Tarver's play, *The Murder of August Dupin*.

Master of Fine Arts Directing students will take the helm for the final two productions. The elegant and classy Jeremy Davis will direct the great Euripides play *Electra*. Peter Mueller will direct *The Shipbuilder*, a play which won the national competition for full-length plays in 1977.

The whole season commences September 19 with an M.F.A. playwrighting project, *Til Human Voices Wake Us*, by Tony Bell. Bell's play will be directed by Henry Woolf. The production will run from September 19-23 at the Media Theatre on the main floor of the Fine Arts Centre. On this occasion, an admission of one dollar will be asked to help raise money for a scholarship fund dedicated to the memory of the former B.F.A. student, Sandee Gukerman, who died this summer. The effort is a genuinely noble one so I hope interested persons will take note and attend what will certainly be an excellent event.



STUDENTS' UNION

Sheet music and tapes replace records in new SU store.

Live in RATT

8:30 PM - Midnight
Mon. Sept. 10 - Sat. Sept. 15
(\$2.00 cover)

Mon - Lionel Rault
Tues - Fat Chants
Wed - Low Society
Thurs - Bucknell & Bucknell
Fri & Sat - Smarties

BEER GARDENS

Mon. Sept. 10 - Fri. Sept. 14
10:30 AM - 3:00 PM

Mon - Lionel Rault
Tues - Fat Chants
Wed - Low Society
Thurs - Bucknell & Bucknell
Fri - Wizard Lake

LIVE!

LIVE!

LIVE!