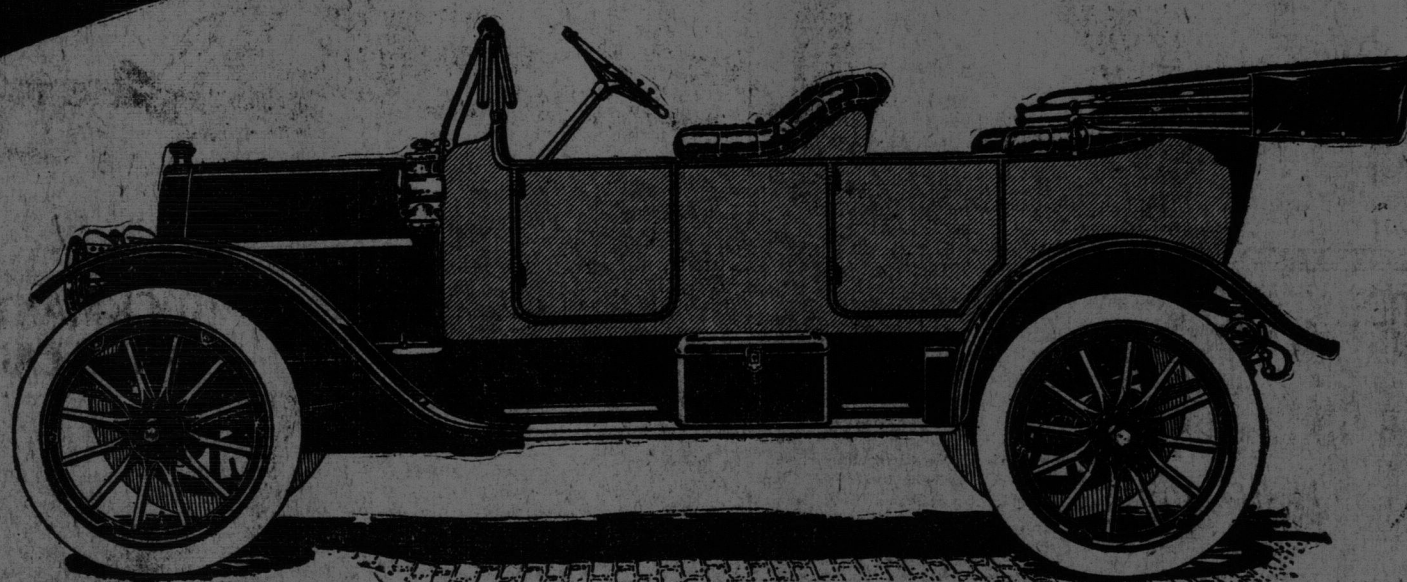
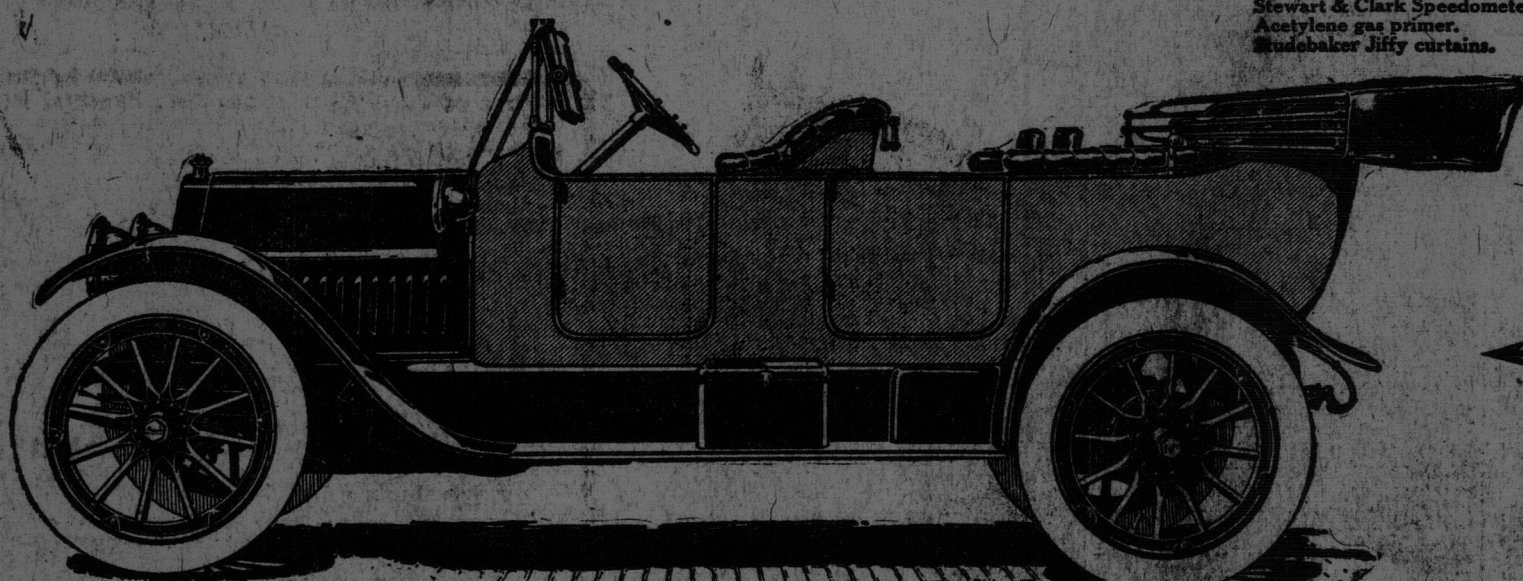


# Studebaker

**\$1050**  
Studebaker "25"



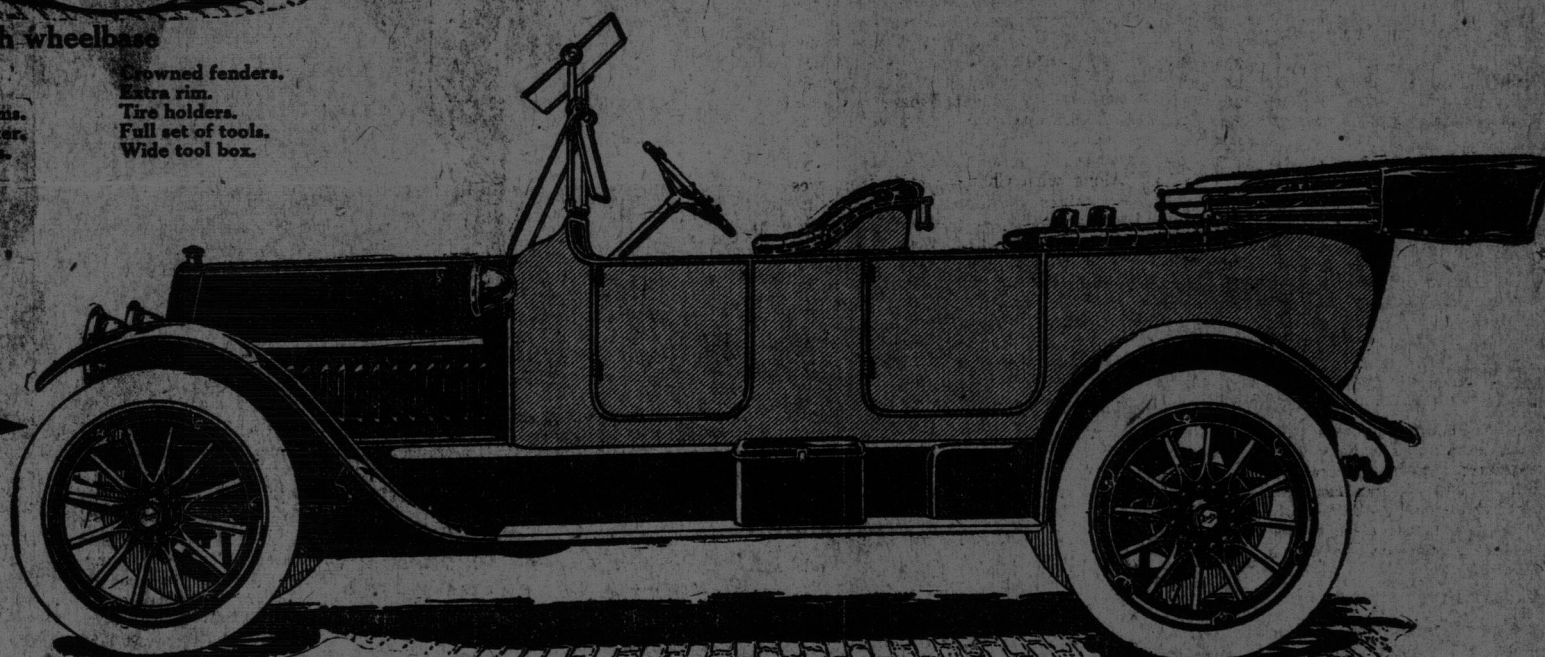
Five-passenger, four cylinders, long stroke, 3 1/2-inch bore x 5-inch stroke  
30x3 1/2 in. GOODYEAR TIRES. Stewart & Clark Speedometer. Acetylene gas primer. Studebaker Jiffy Curtains. Electric horn. Prest-O-Lite tank. Silk mohair top. Full elliptic springs. Rich upholstery, ample cushions. Ventilating windshield. Demountable rims. Tire holders. Full set of tools. Tire repair kit. Tool box. Extra rim.



**\$1500**  
SIX-PASSENGER  
Studebaker "35"

Four cylinders, 4 1/2-inch bore x 5-inch stroke, 116-inch wheelbase  
SIX-PASSENGER body. 34x4 inch GOODYEAR TIRES. Luxurious upholstery. Full floating rear axle. Electric self-starter. Clear-vision, ventilating wind-shield, rain-vision type. Electric lights. Electric horn. Deep cushions. Silk mohair top. Studebaker Jiffy Curtains. Detachable, demountable rims. Stewart & Clark Speedometer. Three-quarter elliptic springs. Crowned fenders. Extra rim. Tire holders. Full set of tools. Wide tool box.

**\$1800**  
Studebaker "Six"



Six cylinders, 3 1/2-inch bore x 5-inch stroke, 121-inch wheelbase  
Electric self-starter. Electric lights. Electric horn. Full floating rear axle. Six-passenger body. Clear-vision, ventilating wind-shield, rain-vision type. Studebaker Jiffy Curtains. 34x4 inch GOODYEAR TIRES. Detachable, demountable rims. Luxurious upholstery. Three-quarter elliptic springs. Deep cushions. Crowned fenders. Stewart & Clark Speedometer. Silk mohair top. Extra rim. Tire holders. Special tool box. Full set of tools.

A Canadian Car for Canadians  
Send for Catalogue

From \$65 to \$65,000,000

## The Six-Passenger Studebaker "35" Is Electrically Lighted And Started

The "35" is a Six-Passenger car. This feature alone distinguishes it from every other car which can be compared with it. Not only is the Six-Passenger "35" finished with deep cushions, Jiffy curtains and every necessary appointment; it is also electrically started and lighted.

The Wagner Electric Self-starter will itself turn the motor over 31 minutes at 61 revolutions per minute. It works perfectly. Simply pull a lever on the steering column and the motor starts.

The electric system is exceedingly simple, requiring no attention, and the 12-volt storage batteries provide current for the brilliant headlights, and 4 other electric lights, including inside dash light.

## The \$1050 Studebaker "25" Is Fully Equipped

It has an acetylene primer for self-starting. The Studebaker Jiffy curtains are of an improved type. They stow away readily, yet are instantly released.

The upholstery is luxurious. The electric horn is controlled from steering wheel. The long stroke motor gives extraordinary power in proportion to weight—more, we believe, than in any other car of the same size.

Demountable rims, with extra rim included, practically eliminate trouble with tires.

In 60 years a \$65 business has grown to a \$65,000,000 business because Studebaker promises have been kept.

To men who have known and used Studebaker automobiles the extraordinary values of these new cars will not seem surprising. Even an electric-lighted, electric-started, six-passenger automobile at \$1,500 will not surprise the man who knows Studebaker achievements.

Yet the \$1,050 "25" is as fine a car in every vital detail of material and workmanship as the "35."

Add to these two unequalled cars the \$1,800 "Six," and the plain superiority of the entire Studebaker line is made clear.

Our factories are the largest in the industry, and our process of manufacture the most complete.

Besides this every buyer has added to his purchase the pledge upon which our business has been built, that his car *must* be satisfactory.

Studebaker service is genuine, because it looks beyond the face value of a guarantee and insists upon the lasting satisfaction of the owner.

The day has come when a Canadian buyer can invest his money as confidently and cheerfully in the purchase of a Studebaker automobile as he would in the purchase of a government bond. Both investments are absolutely safe.

Reflect upon these things, and, then to confirm them, ask yourself where can be bought the equal of the \$1,500 six-passenger Studebaker "35," the \$1,050 Studebaker "25" and the \$1,800 Studebaker "Six."

## The \$1800 Studebaker "SIX" Will Popularize The Six-Cylinder Car

We shall make more Sixes this year than any other manufacturer has ever made in a single year. This large production enables us to build a Six at an unheard-of price. Yet every Studebaker "SIX" will be built with Studebaker care and thoroughness. Our word is pledged to all Studebaker owners.

To every motor lover we offer for \$1800, not only luxury of finish and equipment, but the smooth, resourceful power which six cylinders insure.

The Studebaker "SIX," also, is remarkably economical in use of gasoline. The proportions of its cylinder dimensions are exactly right. The Wagner Electric Self-starter and electric lights complete the equipment of this remarkable car.

Selling automobiles has proved profitable to many business men. We shall be glad to hear from interested parties of good standing.

The Studebaker Corporation of Canada, Limited  
Walkerville, Ontario  
Please send me catalogue describing your cars and I will be interested as a  
Name ☐ Dealer ☐ Buyer  
Address \_\_\_\_\_  
City \_\_\_\_\_  
State \_\_\_\_\_  
Zip \_\_\_\_\_

The Studebaker Corporation of Canada, Limited, Walkerville, Ont.