

# IN LEAP YEAR



This should be a record June for weddings because it is leap year. We don't want to suggest that the increase was caused by the young ladies using their leap year prerogative, but we want to hint that there may be some Canadian girls of the proper age who haven't used the privilege that the year gives them.

For the men we have to recommend our silk hats—such superior designs as those by Dunlap of New York and Henry Heath of London, England, Tress of London, Hillgate and Christy and Dineen \$5 to \$8.

**The W. & D. Dineen Company, Limited**  
Cor. Yonge and Temperance Sts., Toronto

## NORTH AND SOUTH POLES TO BE EXPLORERS' QUESTS

Peary's Plans Outlined Before International Congress - Unknown is Going South.

BRUSSELS, May 31.—At yesterday's session of the International Polar Congress, Herbert L. Bridgman, representing the United States, submitted the scheme for reaching the North Pole prepared by the Peary Arctic Club of New York.

The plan involves the use of Peary's old ship, the Roosevelt, which will leave in the fall, winter on the north shore of Grant Land, and thence make a dash for the pole in 1909. The coast of Grant Land will be followed westward to Cape Columbia, over a route which will shorten the distance 100 miles and counteract the effects of the eastern currents.

One of the features of the new scheme is the more rigid training of sledge division in order to keep the men together. On the return voyage, Lieut. Peary proposes to explore Crocker Land, a section of the unknown Arctic, the exploration of which he thinks may revolutionize the existing ideas regarding the heretofore traversed polar regions.

Mr. Bridgman moved that the committee place Lieut. Peary's scheme on record, with a vote of congratulations to the lieutenant.

At the afternoon session of the congress, the fact was disclosed that an American is preparing to undertake an expedition to the south pole in 1910, upon plans worked out by Lieut. Peary. The latter, however, is not to take part in the expedition.

President Roosevelt, to whom Lieut. Peary disclosed the facts, is said to have endorsed it enthusiastically. The identity of the American has not been revealed.

**It is Wise**  
to be forewarned for the happenings of the day by fortifying yourself with a knowledge of what the other fellow is doing. This is easily accomplished by reading The Toronto Daily World, delivered before breakfast. Telephone orders received at Main 252.

**Gasoline Explosion.**  
PHILADELPHIA, May 31.—An explosion of a naphtha launch, which cost the life of one man and resulted in the injury of about fifteen others, occurred late last night in the Delaware river off the northern part of this city.

**Gasoline Explosion.**  
PHILADELPHIA, May 31.—An explosion of a naphtha launch, which cost the life of one man and resulted in the injury of about fifteen others, occurred late last night in the Delaware river off the northern part of this city.

**Gasoline Explosion.**  
PHILADELPHIA, May 31.—An explosion of a naphtha launch, which cost the life of one man and resulted in the injury of about fifteen others, occurred late last night in the Delaware river off the northern part of this city.

**Gasoline Explosion.**  
PHILADELPHIA, May 31.—An explosion of a naphtha launch, which cost the life of one man and resulted in the injury of about fifteen others, occurred late last night in the Delaware river off the northern part of this city.

**Gasoline Explosion.**  
PHILADELPHIA, May 31.—An explosion of a naphtha launch, which cost the life of one man and resulted in the injury of about fifteen others, occurred late last night in the Delaware river off the northern part of this city.

**Gasoline Explosion.**  
PHILADELPHIA, May 31.—An explosion of a naphtha launch, which cost the life of one man and resulted in the injury of about fifteen others, occurred late last night in the Delaware river off the northern part of this city.

## LONG LIST OF CASES TO BE HEARD BY COMMISSION

Railroads Are Applicants in Many Cases for Crossing Privileges or Construction of Switches.

OTTAWA, May 31.—(Special.)—There is a long list of cases set down for a hearing at the meeting of the Board of Railway Commissioners here on Tuesday. Among them are:

Application of the C.P.R. for authority to lay an extra track across the public road at Janville, Ont.

Application of the Essex Terminal Railway for authority to construct its railway across the W. E. & L. S. Rapid Railway on the gravel road, Township of Sandwich, Ontario.

Complaint of the municipal council of the County of Victoria and Township of Emily re G.T.R. Station at Omenees, Ont.

Application of the G.T.R. for authority to construct a branch line to the premises of the Geo. Matthews Company, Limited, Peterboro, Ont.

Application of the Ontario Power Co. re crossing with transmission wires over the G.T.R. between concessions 6 and 7, lots 23 and 24, Township of Crowland.

Application of the C.P.R. for an order rescinding or varying order of the railway committee dated May 13, 1888, re trestle bridge carrying branch line to Dickson's Mills, Peterboro, Ont.

Application of the Peterboro Radial Railway for an order amending order dated June 16, 1904, re Lock-street, Peterboro, Ont.

Application of the C.P.R. for leave to construct branch lines in the Town of Parry Sound.

Application of the C.N.O. Railway for authority to construct a branch line in the Town of Parry Sound.

Application of the C.N.O. Railway for authority to construct and maintain a deviation of the Great North Road, Parry Sound, Ont.

Application of the C.N.O. Railway for authority to carry telegraph wires across G.T.R. tracks near Gamebridge, Ont.

Application of the C.P.R. for an order fixing compensation to be paid by the G.T.R. for use and enjoyment of the right of way between Nipissing Junction and North Bay, including service and accommodation provided, at present and since July 2, 1907.

Complaint of J. R. Sonley, Blackwater, Ont., re damage done to his property by the G.T.R.

Application of the Town of Steelton, Ont., for an order directing the C.P.R. to operate a station with proper accommodation and facilities at Steelton, Ont.

Application of the Ottawa Electric Railway for authority to cross Chaudiere branch of G.T.R. into the Export Lumber Co.'s yards, Ottawa.

Application of the City of Ottawa, Ont., for amending order re widening of Somerset-street Bridge, Ottawa.

Application of the Georgian Bay and Seaboard Railway for authority to cross the tracks of the Lindsay, Bobcaygeon and Pontypool Railway in the Town of Lindsay, Ont.

Application of the Windsor, Essex and Lake Shore Rapid Railway for an order to interchange traffic at Kingsville, Ont.

There are a number of Montreal and Winnipeg cases.

**CLEVER COUNTERFEITERS.**  
Winnipeg Police Say Two Green-goods Men Have Bad Record.

WINNIPEG, May 31.—Wolf Cohen and Solomon S. Sadowsky, two green goods men from Philadelphia, caught by Winnipeg police Thursday morning, are in reality two counterfeiters with national reputation, according to statement of one of the police officials, and a charge of counterfeiting will be laid against them when they come up for trial next Friday morning.

When the two men first appeared in Winnipeg, they showed partially completed American bills to N. Segal, their intended victim. These bills were printed on only one side, and, according to Segal, had every appearance of being genuine.

Detectives are still searching for the house in which the two men stayed while in Winnipeg, but so far without success. It is believed when these lodgings are located dies and other paraphernalia for manufacturing spurious money will be discovered, incidentally, money frequently appears in circulation here, and the police have been unable to trace its source.

Before the arrest Cohen boasted that if the police attempted to arrest him he would kill both himself and them, exhibiting a small vial which he claimed contained nitro-glycerine.

**TRAINS MOVE AGAIN.**  
Temporary Critwork Constructed at Port Arthur.

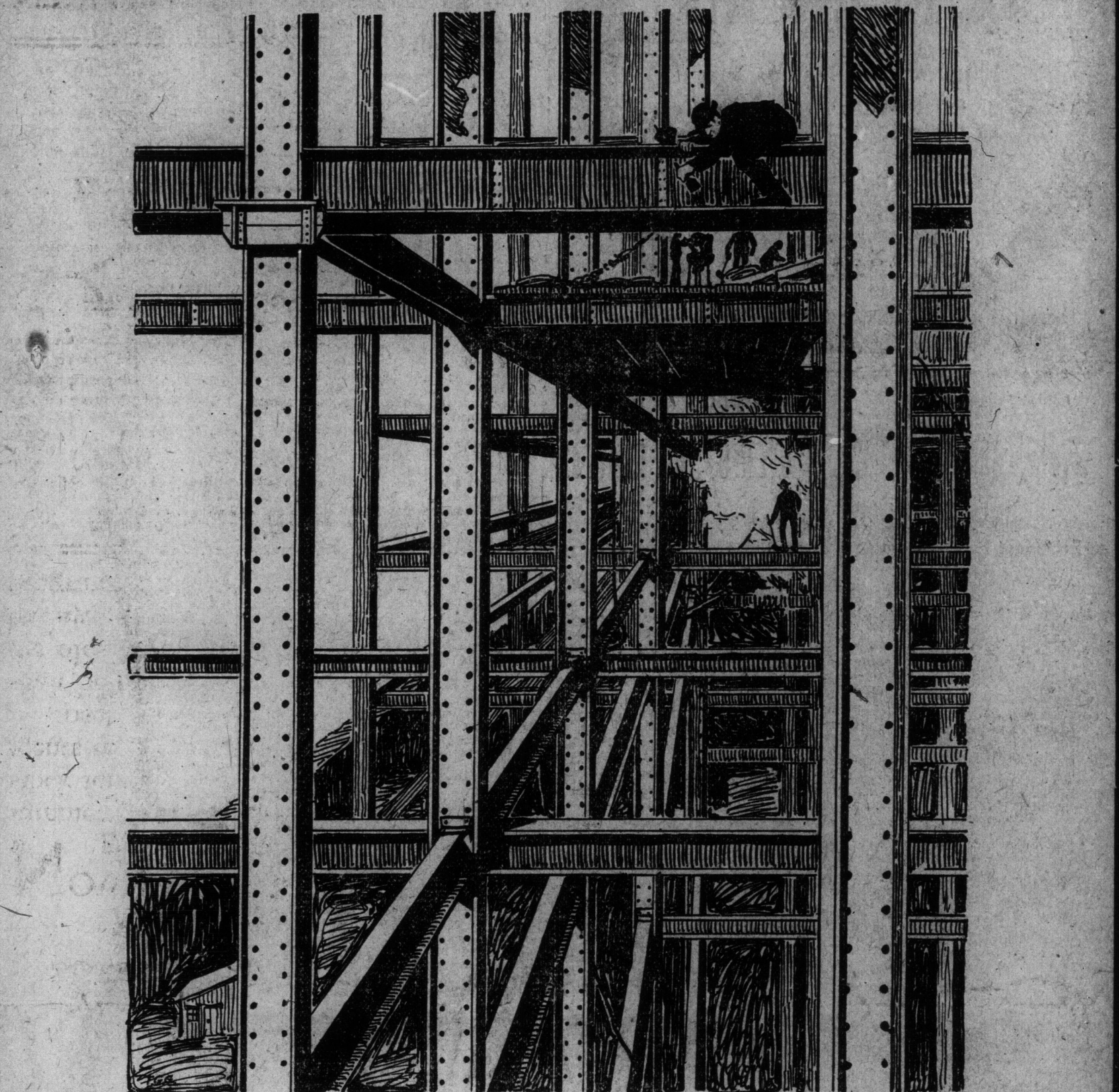
PORT ARTHUR, May 31.—(Special.)—C.P.R. trains that have been delayed here on account of the washout, caused by the breaking away of one of the city storage dams, are now running thru again.

Men had been engaged continuously in the building of cribs, and last night the track was completed.

**Newsboys Meeting.**  
A mass meeting of the Toronto Newsboys' Union will be held to-night at 8:30 sharp, Labor Temple, Church-street. All newsboys should attend this meeting. Very important business. Union buttons will be given out at this meeting. By order of the committee, T.N.B.U.

H. H. FUDGER, Pres. THE ROBERT SIMPSON COMPANY, LIMITED J. WOOD, Man. MONDAY, JUNE 1.

# The Summer Sale at Simpson's



**N**OW that June is here we are more than ever anxious to rush our summer goods out and you of course are more than ever anxious to complete your summer supplies. Further than that, we are planning for an entire change of stock for our new building when it is ready. And so we give every lively inducement to shoppers in every department of the store. The whole store is soon to be upset with re-organization. The less goods we have on hand the better we shall be equipped to handle the problem of amalgamating the new building with the old. Hence a good vigorous exciting **all-along-the-line June Sale** starts to-day. To-morrow it will continue with growing interest and enthusiasm. The programme is prepared as follows on this page.

- 500 Sample Belts for Men**  
Do you wear a negligee shirt without a vest in summer time? You need a belt then, and here's your chance. Act quickly.  
A manufacturer's clearance of Men's Sample Belts, including a few lines from our own stock, consisting of all widths, colors and sizes up to 46. Regular value 50c, 75c and \$1.00. Tuesday ..... **25c**
- Men's 2.50 Soft Hats 1.45**  
Men's Pearl Grey, Fawn and Brown Summer Wear Soft Hats, best quality English fur felt. Regular up to \$2.50. Tuesday ..... **1.45**
- Boys' Romper Suits for 50c**  
Special clearing line of Children's Rompers, or Play Suits, in a dark blue Oxford and light blue chambray, trimmed with red edging round collars and belts, to fit 2-12 to 6 years. Regular price 75c. To clear ..... **50c**

- A Big Sale of Pictures Also**  
Tuesday will see big reductions in good pictures. They have been framed in our own factory during the slack season; the pictures we bought at a fraction of their market value.  
180 only Photographures, by Faulkner, London, and a few Pastels by Chandler, New York, suitably framed in solid oak, with gilt lining, and imported gilt moulding. Suitable for any room. Regular values \$4.00 to \$11.50. 8 o'clock sharp, Tuesday. See them in Yonge Street window Monday. **1.98**
- Sheets and Table Cloths**  
Full Bleached Sheets, made from heavy pure-finished English sheetings, spoke hemstitched, finest finish, 2 1/4 x 2 1/2 yards, for large double bed. Regular \$2.25 per pair. Tuesday ..... **1.69**  
A clearing of odd Table Cloths, all pure linen satin damask, full grass or dew bleached, beautiful qualities, no napkins to match, beautiful bordered designs, 2 x 2 1/2 and 2 x 3 yards. Regular \$2.50, \$2.75 and \$3.00 each. Tuesday ..... **2.09**

## Carpets made, laid and lined. Free During June Linoleums made, laid and lined. Furniture re-covered.

Without charge save only for materials we offer to put down floor coverings, hang curtains or re-upholster furniture if orders are given during the month of June. If ever a liberal offer was made to housekeepers this is it. No extra charge for the work—you pay only for the materials.

- A Beautiful Bed Spread and Bolster Roll 3.85**  
Cover, complete to your order for ..... **3.85**
- A large Lace Panel, with Battenberg design borders, corners and medallion, a smaller one in the same design for the bolster roll, sufficient net to make deep, full frills, and lace and insertion enough to trim both, made to your order if ordered on Tuesday. **\$3.85** for each ..... **3.85**  
If we charged you for the making the price would be \$6.00.
- 1500 yards of New Brussels Pattern Tapestry Carpet, an extra fine English weave, borders to match, self and combination colorings. This carpet will outwear many Brussels, and looks equally well. If ordered on Tuesday, made and laid for, per yard ..... **65c**
- Greenwich Inlaid Linoleum.**  
Laid on your floor for:  
First quality, per square yard ..... **50c**  
Second quality, per square yard ..... **47c**  
This means a saving of from 21c to 46c per square yard, if you buy on Tuesday.

English weave, borders to match, self and combination colorings. This carpet will outwear many Brussels, and looks equally well. If ordered on Tuesday, made and laid for, per yard ..... **65c**

**2-IN SHOE POLISH**  
PLEASE EVERYBODY BECAUSE

**DODD'S KIDNEY PILLS**  
FOR ALL KIDNEY DISEASES  
BRIGGS' RHEUMATISM  
BRIGGS' DIABETES  
BRIGGS' GRAVEL  
BRIGGS' NEURALGIA  
BRIGGS' MIGRAINE  
BRIGGS' SCIATICA  
BRIGGS' GOUT  
BRIGGS' CALCULI  
BRIGGS' SANDS  
BRIGGS' URIC ACID  
BRIGGS' URIC ACID  
BRIGGS' URIC ACID

There W More Comp In On Fight INDEPE

ADDI (Con 655. DUFF elect DURE last LAUNA Matl majc MUSE) (Con 900. SIMON For clam VICTO negl jorit

There v Whitney elamation. At Well the Libera the seat Fraser, to the El received I to another between n cleared clo It seem time was zed verb 20 minute rated Fras and then, was nomi secondar. Sutherlan mond's hor ser was ber on the stat or Niagara under the the it w nomination. Dissensio vented moo elation. In Noth tives are I an interna section. Marmora t croft.

In Frin two Cons-choice of Alex of W The san Grenville, ventio no son, is ch another candi dature and a Con In South son (Con) Wagner, I No Cons Middlesex, pendent L it out. Jos. A. Jos. A. W temperanc Nominat three can Hon. Dr. dependent McNea. F go by wait regular co the Whitn on the stat His griev public wo to the po The appa for Reau

Most of paper giv of 72 seat leaving 34 majority o in 42 in a new seat lature will to an ab that enou solidificat Liberal ra and for th months pa for the Lib has had it sent gover Besides th campaign e representi conded fro as anyonc eral meeti for making an undoub the time he time whiteness, bu honor of Their abel Monday m It has bee government ing like so when they A. G. Ma have been also that t attached to Conservati independen party, whi weakness No friend of the W Co