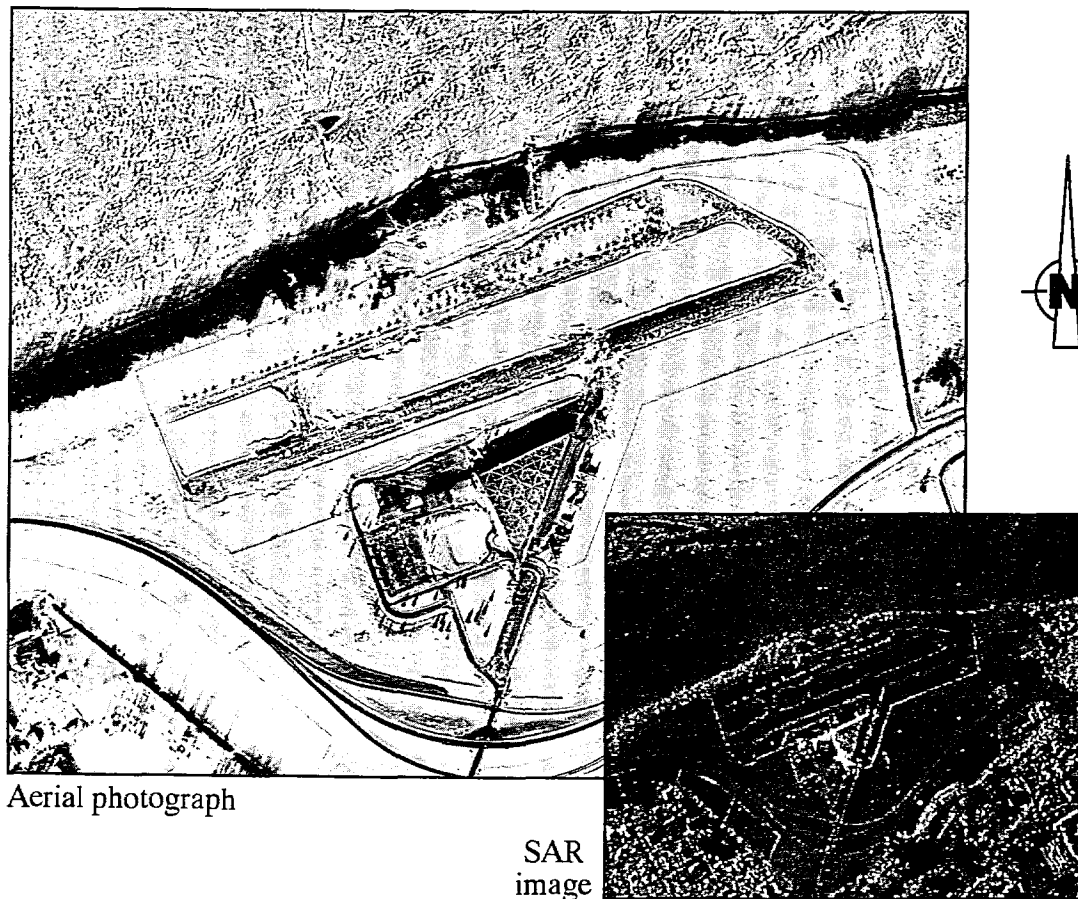


similar to that from the larger aircraft beside the hangar. Using the photography, aircraft are clearly recognizable but they may not be identifiable (for example, as a Piper Navaho or Cessna Conquest). The small aircraft are widely spaced and can be counted using the SAR imagery. However, individual aircraft might not be distinguishable if they are more closely spaced. The aircraft by the hangar are closer together and therefore more difficult to separate in the SAR imagery.

FIGURE 4 shows the Pickering nuclear power facility on Lake Ontario near Oshawa. Once again, the aerial photography is easier to interpret than the SAR imagery. The eight large reactor buildings are not evident in the SAR imagery because the curvature of their tops scatters the microwave pulse in many directions, resulting in a small return signal. It is also difficult to distinguish between the water in the L-shaped con-



---

FIGURE 3

Aerial photograph and SAR imagery of Rockcliffe airfield.