

Holotype, ♂, Guam, Ladrões, D. T. Fulloway, coll. No. 1384.

Dicranomyia guttula, sp. n. (Fig. 9.)

Brown; wings hyaline with gray spots along the veins; *Sc* short ending opposite the origin of *Rs*.

Female.—Length 4.5–5 mm; wing, 5.7–6.4 mm.

Rostrum, palpi and antennæ dark brown. Head grey.

Thoracic præscutum rich yellowish brown with indications of darker markings behind; scutum similar with an indistinct darker spot on either lobe in front; postnotum light brown with a faint whitish bloom. Pleuræ brown, the dorsal sclerites, including those of the neck, around to the halteres, dark brown. Halteres light brown, the knob darker. Legs with the coxæ and trochanters yellow, femora dull yellow, tibiæ and tarsi light brown. Wings hyaline, the veins with abundant grey spots at short intervals producing a speckled appearance. Venation as in the figure—*Sc* short ending just beyond the origin of *Rs*, *Sc*₂ being exactly opposite the origin of *Rs*, cell 1st *M*₂ long and narrow, the outer deflection of *M*₃ long and arcuated, over twice as long as cross-vein *m*, basal deflection of *Cu*₁ just beyond the fork of *M*.

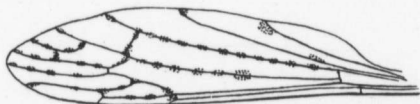


Fig. 9.—*Dicranomyia guttula*.

Abdominal tergites brown, tip of the abdomen, including ovipositor, yellowish; sternites yellowish.

Habitat.—Lor Marquez, South Africa.

Holotype, ♀, Lor Marquez, Africa, C. W. Howard, coll. No. 14.

Paratype, ♀, topotypic.

From *D. irrorata* Enderlein (Zool. Jahrb., vol. 32, pt. 1, p. 74, 75, fig. V1) this species differs in having *Sc* short and in having the spots on the wings confined to the veins.

Genus *Libnotes* Westwood.

1876. *Libnotes* Westwood; Trans. Ent. Soc. Lond., p. 505.

Libnotes picta, sp. n. (Fig. 10.)

Colour yellow, the thoracic dorsum with six rounded black