

HENDERSON & BULL,

Commission Merchants

—AND—

MANUFACTURERS' AGENTS.

Agents for the Canada Sugar Refining Company, Montreal.
STORAGE, Bond or Free. Lowest Rates of Insurance in the City. Liberal Advances made on Consignments.

Offices and Warehouse, 41 Bannatyne St. East.
WINNIPEG.

The Ames, Holden Company,

AMES, HOLDEN & CO., MONTREAL.
JAMES REDMOND, } WINNIPEG.
A. C. FLUMPELDT, }

WHOLESALE

Dealers in

BOOTS & SHOES,

Gerrie Block, Princess Street,
WINNIPEG.

BISCUITS**CONFECTIONERY****PAULIN & CO.,**

Wholesale Manufacturers.

Orders by Mail promptly attended to.

OFFICE & STEAM FACTORY

11 Ross St., **WINNIPEG.****New Teas, 1885.**

JUST ARRIVING.

Ex S.S. "Afghan" and "Principia,"

1,521 packages "JAPAN TEAS,"
including "Basket Fired," "Strictly Uncolored,"
and "Natural Leafs."

Ex S.S. "Alternay," 405 packages "Moyano" & "Kaisow"
—CONGOU—

And expected daily Ex S.S. "Alternay," balance of our
fall shipments. All

DIRECT IMPORTATIONS

These TEAS are the best values we have ever offered.
Buyers will do well to see our samples before purchasing
elsewhere. Special inducements to the Wholesale Trade.

COFFEES,

'Mocha,' 'Old Govt Java,' 'Jamaica' and 'Rio,' 'Green' or 'Roasted,'
We also have these Coffees ground and packed under
our own supervision.

G. F. & J. GALT,

Tea Importers and Wholesale Grocers,
PRINCESS STREET, **WINNIPEG.**

Thompson,
Codville & Co.,

WHOLESALE GROCERS,

26 McDermott Street,

WINNIPEG.**E. F. Hutchings,**

WHOLESALE DEALER AND MANUFACTURER OF

Saddlery, Harness & Leather

Trunks, Valises, Etc., Etc.

Having bought the stock of C. H. Field and
Co., at a very low rate, can now OFFER
SPECIAL INDUCEMENTS in Blankets and
Bells and Saddlery of all kinds.

See my Winter King Whips.

Retail Store: 569 Main Street.

WHOLESALE WAREHOUSE:

46 McWilliam Street East,

ESTABLISHED 1867.

WINNIPEG.**DUNN & BENNIE,**

Accountants, Auditors,

COMMERCIAL AND FINANCIAL AGENTS,

NOTRE DAME STREET EAST,

(Opposite Bank of Montreal),

Box 311.

WINNIPEG, MAN.

Special attention given to Insolvency matters. Estates
to trust carefully and economically administered. Books
opened and balanced for private firms. Accounts and
statements of Joint Stock and Public Companies audited.

ROBT. DUNN,

THOS. BENNIE.

Sutherland & Campbell,**WHOLESALE GROCERS**

—AND—

COMMISSION MERCHANTS

STOCK LARGE AND WELL ASSORTED

PRICES LOW TO CASH AND

PROMPT MEN.

PRINCESS ST., **WINNIPEG.**

W. HIGGINS & CO.,
WHOLESALE DEALERS
Boots & Shoes, Trunks, &c.

33 PORTAGE AVENUE EAST.

WINNIPEG, MAN

VIPOND, McBRIDE & CO.

Wholesale Fruit & Produce

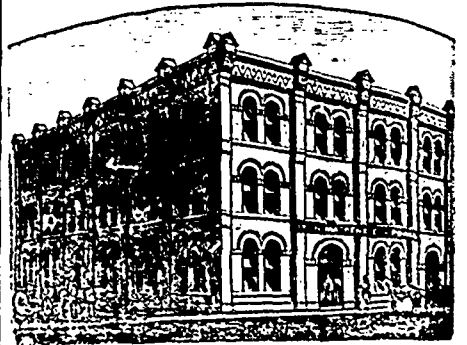
—AND—

GENERAL COMMISSION MERCHANT

Consignments of Fresh Fruits received regularly in
their season

261 & 263 Commissioners St., Montreal, and

18 ALEXANDER ST. EAST, WINNIPEG.



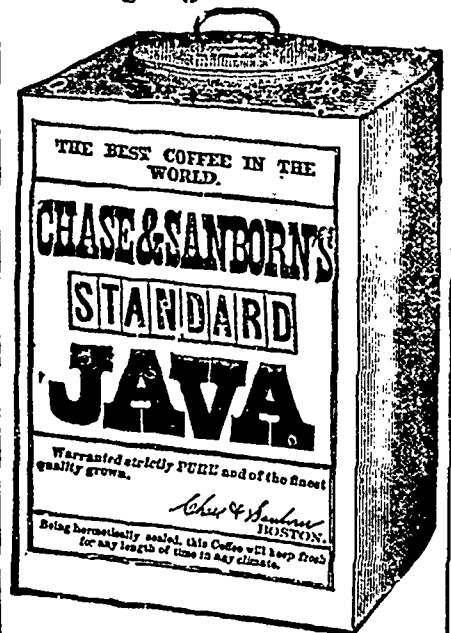
LYON, MACKENZIE & POWIS,
WHOLESALE GROCERS,

Cor. McDermott & Albert Sts., **WINNIPEG.****CHASE & SANBORN,**

87 BROAD AND 8 HAMILTON STS.,

BOSTON.

Solo Importers and distributors of this
elegant growth of Coffee.



Turner, MacKeand & Co.,
Solo Agents in the Northwest.

35 AND 37 BANNATYNE STREET EAST,

WINNIPEG.