

C H E S S .

(To Correspondents.)

A SUBSCRIBER.—Our tale, the "FATAL MATE," which appeared in the last No., is not original. Your solutions to the Problems are correct. Try the one published in the tale "How a World was won;" it is not difficult.

F. W. S., and others.—We give the celebrated Indian Problem in the present No. In our next, if possible, we shall give a position by a German player, which is considered by many fully equal, if not superior, to the Indian Problem.

C. J. H., Hamilton.—Your problem is defective, as mate may be given in three moves. Try again.

Solutions to Problems in FATAL MATE by a Subscriber, J. B., Amy, and J. H. R., are correct.

Solutions to Problem No. 17 by J. B., J. H. R., and Ohio, are correct.

Solutions to Enigmas in our last by Evans, Amy, J. H. R., and G. D., are correct.

SOLUTIONS TO PROBLEMS IN FATAL MATE.

No. I. Page 315.

- | | |
|---------------------|------------------------|
| <i>White.</i> | <i>Black.</i> |
| 1. Q to K 5th (ch). | P takes Q. |
| 2. B to K R 2d. | B takes P at K Kt 5th. |
| 3. P takes B. | Anything. |
| 4. K Kt P mates. | |

No. II. Page 321.

- | | |
|------------------------|---------------|
| <i>White.</i> | <i>Black.</i> |
| 1. Q to Q R 4th (ch). | K to Q B sq. |
| 2. Q to K Kt 4th (ch). | Q interposes. |
| 3. Q to K Kt 5th (ch). | Q interposes. |
| 4. Q P checks. | K takes P. |
| 5. Q mates. | |

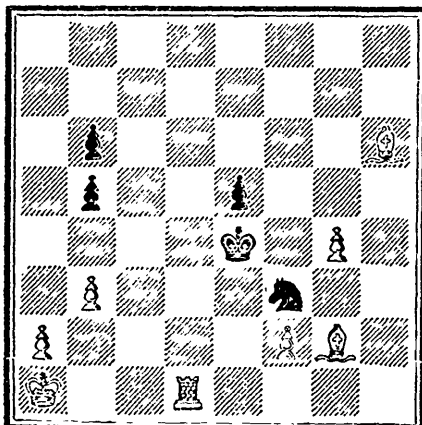
SOLUTION TO PROBLEM No. XVII.

- | | |
|-------------------|----------------------|
| <i>White.</i> | <i>Black.</i> |
| 1. B to Q B 5th. | K to his 4th (best). |
| 2. K to K Kt 5th. | P moves. |
| 3. R to Q B 7th. | Anything. |
| 4. R mates. | |

PROBLEM No. XVIII.

The Indian Problem.

BLACK.



WHITE.

White to play and mate in four moves.

ENIGMA.

No. 51. By M. D'Orville.

WHITE.—K at Q Kt sq; R at Q R 7th; B at Q B 4th; Kts at K Kt 8th, and K 6th.

BLACK.—K at his sq; Q at her 7th; R at Q R 7th; Kts at Q 4th, and Q B 2d; P at K B 2d.

White to play and mate in three moves.

CHESS IN ENGLAND.

A game in which Mr. Staunton gives his Q's Kt to Mr. C. Kenny, an amateur of the London Chess Club:—

(Remove Black's Q's Kt from the board.)

- | | |
|------------------------|---------------------|
| <i>Black.</i> | <i>White.</i> |
| 1. P to K 4th. | r to K 4th. |
| 2. K Kt to B 3d. | Q Kt to B 3d. |
| 3. K B to Q B 4th. | K B to Q B 4th. |
| 4. P to Q Kt 4th. | B takes Kt P. |
| 5. P to Q B 3d. | B to Q R 4th. |
| 6. Castles. | B to Q Kt 3d. |
| 7. P to Q 4th. | P takes P. |
| 8. P takes P. | P to Q 3d. |
| 9. Q to her Kt 3d. | Q to K 2d. |
| 10. P to K 5th. | Kt to Q R 4th. |
| 11. Q to R 4th (ch). | B to Q 2d. |
| 12. Q to her B 2d. | Kt takes B. |
| 13. Q takes Kt. | P takes P. |
| 14. Kt takes P. | Q to K 3d. |
| 15. Q to her 3d. | P to Q R 3d (a). |
| 16. K R to K sq. | Castles. |
| 17. Q B to Kt 2d. | K Kt to B 3d. |
| 18. Kt to Q B 4th. | Q to her 4th. |
| 19. Q R to Q B sq (b). | B to Q R 2d. |
| 20. K R to K 5th. | Q to her B 3d. |
| 21. P to Q 5th. | Q to her R 5th. |
| 22. Kt to Q 6th (ch). | K to Kt sq. |
| 23. Kt takes K B P. | B takes K B P (ch). |
| 24. K takes B. | Kt to his 5th (ch). |
| 25. K to Kt sq. | Kt takes R. |
| 26. B takes Kt. | B to Q Kt 4th. |
| 27. Q to K 3d. | R takes Q P. |
| 28. B takes P (ch). | K to R sq. |
| 29. Kt takes K R. | R to Q 8th (ch). |
| 30. R takes R. | Q takes R (ch). |
| 31. K to B 2d. | Q to K B 8th (ch). |
| 32. K to Kt 3d. | Q to K B sq. |
| 33. P to Q R 4th. | B takes P (c). |
| 34. Q to K B 4th (d). | |

Saving the piece and winning the game.

Notes.

(a) With the view to play the bishop to Kt 4th, and gain the "exchange."

(b) Threatening to win both Q and B.

(c) Black threw forward this pawn, foreseeing that if his opponent took it he would be enabled to save the threatened Kt, or gain an equivalent, and that, if White refused the pawn, it would, when pushed one square more, have served to support the bishop at Q Kt 6th.

(d) Had White changed Queens and played B to Q Kt 6th, to prevent the escape of the Kt, the following series of moves would probably have occurred:—

- | | |
|---------------------------------|----------------|
| 35. Q takes Q. | B to Q Kt 6th. |
| 36. K takes Q. | B to Q Kt 6th. |
| 37. B to Q Kt 6th. | K to Kt sq. |
| 38. K to his 5th. | K to B sq. |
| 39. K to Q 6th, winning easily. | |