

to fifty gallons of water, on five cherry-trees. The percentage of benefit was 40.3.

In order to ascertain whether there was any danger to health in eating fruit after the spraying with such a poisonous material as London purple, specimens of the fruit, clipped off carefully with scissors, were sent to Professor Weber for analysis, and no trace of arsenic was found on them.

The results of the experiments seem to warrant the following conclusions:

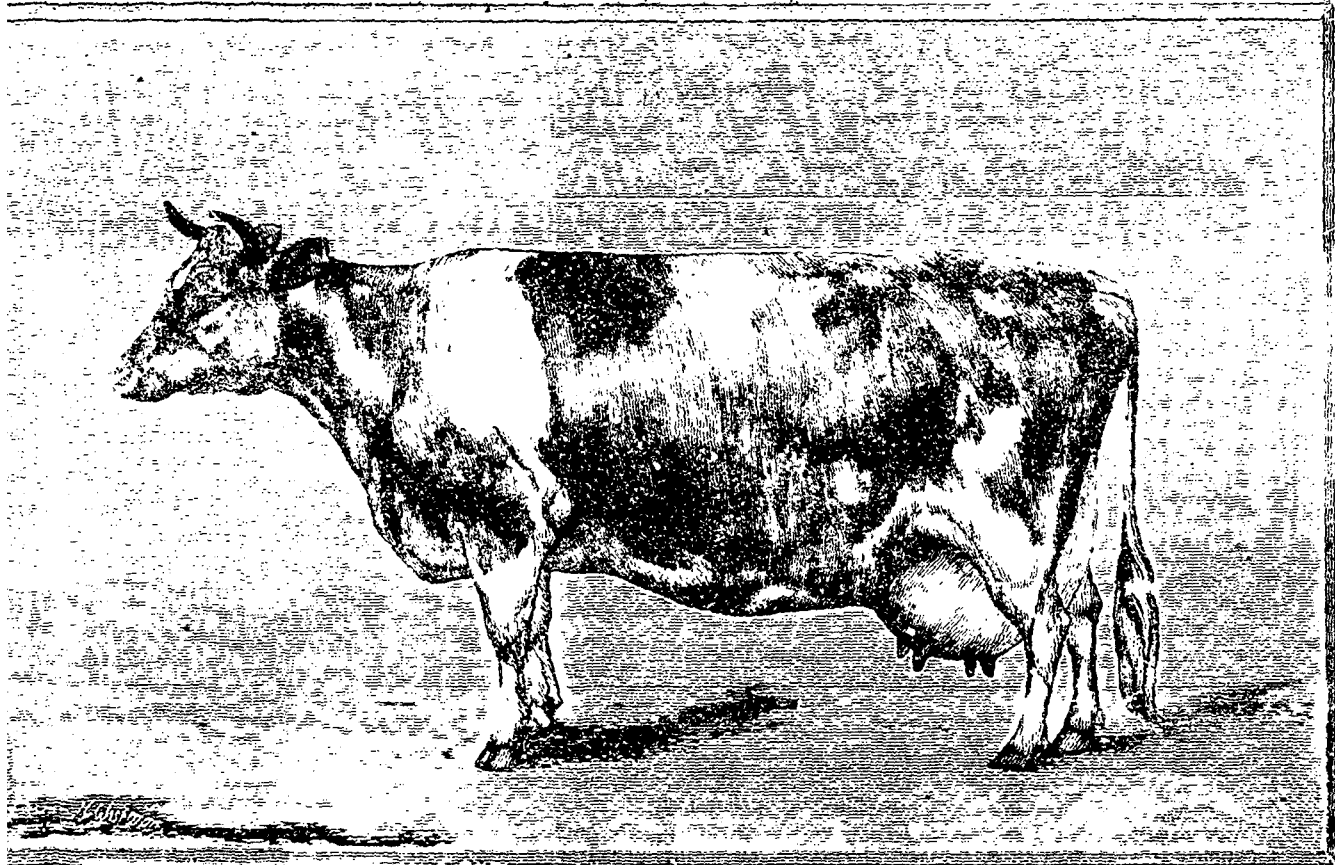
1. That three-fourths of the cherries, plums, and pears liable to injury by the curculio, may be saved by spraying with London purple.

2. That if an interval of a month occurs between the last spraying and the ripening of the fruit, no danger to health will follow from eating the fruit.

ket! "A true and faithful analysis" of each "brand or quality," which the law requires shall include the guaranteed analysis of the article, and must be uniform on all packages, is to be lodged with the Commission; so that, in point of fact, the paternal State has done, once for all, for its agriculturists, what otherwise each individual would have had to get done by an analytical chemist at his own expense.

The following label is to be affixed to each bag containing fertilisers:

Weight of bag .....  
Name or brand .....  
Trade-mark .....  
Manufacturer's address .....  
Analysis ..... date .....



GUERNSEY COW FLOWER 2ND.

As for the lime spray, as the fruit seems to have been coated with a thickish layer of white-wash, I should not care to practise it.

*Annual report (10th) of the N. Carolina Station.*—Immense pains seem to be taken at every station in the Union to secure purity of composition and cheapness in the various fertilisers offered for sale. The manufacturers are kept, as far as possible, under severe control, and, to begin with, have to pay a license fee of \$500, and to file their trade-mark with the Commissioner of Agriculture. The license is required upon every separate "brand or quality." Thus, if the same rule obtained here, Messrs. Brodie and Harvey, who advertise five "brands or qualities" of manure, would have to pay a license fee of \$2,500 before they could put their goods on the mar-

Available phosphoric acid..... per cent.  
Nitrogen (or ammonia if claimed)..... " "  
Potash (if claimed)..... " "  
North Carolina privilege-tax paid.....

By "available phosphoric acid" is meant the sum of the soluble and the so-called "reverted."

As a further check upon the trade, gratuitous analyses are made at the station for any actual N. Carolina farmer who will send samples taken according to certain directions issued by the government of the State.

The results of the experiments carried on at this station on the forage-plants, on permanent pasture, &c., though interesting in themselves, would be of little value to us on account of the vast difference of climate. Fancy the temperature of January varying from 73° F. to—4° F. = 77 degrees!