

GOING WEST
No. 1 6.45 a.m. No. 2—12.23 p.m.
3—1.07 p.m. 4—1.19 p.m.
5—2.32 a.m. 6—1.32 a.m.
7—1.13 a.m. 8—2.49 p.m.
J. A. RICHARDSON,
Dist. Pass. Agt., Toronto and St. Thomas.
J. C. PRITCHARD,
Station Agent,
W. E. RISPIN,
W. P. A. 115 King St., Chatham.

CANADIAN PACIFIC RAILWAY
Corrected Aug. 1st, 1905.
GOING EAST
7 a.m. daily, ex. Sunday 1.03 a.m.
12.23 a.m. Express 1.11 a.m.
3.32 p.m. " " 3.50 p.m.
This train runs daily except Sunday
Starts from here and remains over night.

GRAND TRUNK
Takes effect Sunday, May 14, 1905.
WEST.
2.39 a.m. for Windsor, Detroit and in-
mediate stations except Sunday
12.45 p.m. for Windsor and Detroit.
2.18 p.m. for Windsor and Detroit.
9.19 p.m. for Detroit, Chicago and west
International Limited, 9.08 p.m. daily
EAST.
7.37 a.m. for London, Hamilton, Toron-
to, Buffalo
12.00 p.m. for London, Toronto, Mon-
real, Buffalo and New York.
1.12 p.m. for London, Hamilton, To-
ronto, Montreal and East.
9.00 p.m. for London and intermediate
stations
Daily except Sunday: "Daily.

PERE MARQUETTE R.R.
Leave Chatham Express 6.35 a.m. 3.25 p.m.
Return West 7.55 a.m. 4.55 p.m.
Leave Chatham Express 7.55 a.m. 4.55 p.m.
Return East 7.55 a.m. 4.55 p.m.
Arrive at Chatham
From
Windsorville 7.55 a.m. 6.45 p.m.
St. Thomas 7.55 a.m. 6.45 p.m.
Sarnia 7.55 a.m. 6.45 p.m.
Commencing June 25, following service will
be in effect—Leave Chatham 5.45 a.m. 9.45
a.m. 1.30 p.m. 4.00 p.m. Arrive from Windsor
7.30 a.m. 11.45 a.m. 3.35 p.m. 6.05 p.m.
Round trip every Friday night. Special train
leave Chatham 7.30 p.m., commencing June
25, except Friday July 7th.
Central Standard Time—one hour slower
than city time.

CANADIAN PACIFIC RAILWAY
Farm Laborers' Excursion
Manitoba and Assiniboia
\$12.00 Going \$18.00 Returning
GOING DATES
Aug. 29, 1905. Stations south of, but not
including main line Toronto to
Sarnia (including Toronto).
Sept. 2, 1905. Main line Toronto to Sar-
nia and stations north ex-
cept north of Cardwell Junction and Toronto on
North Bay Section.
Sept. 4, 1905. From all points Toronto
South of Lake and Kingston, and north of To-
ronto and Cardwell Junction on North Bay and Mid-
land Divisions.

The Toronto Exhibition
Round Trip Tickets will be sold at
SINGLE FARE LOW RATES.
\$3.50 \$3.80
On August 29th to On August 29th to
Sept. 4th. Sept. 4th.
All tickets good to return up to and including
Sept. 25th, 1905.

Labor Day—Single Fare!
Good going Sept. 2nd, 3rd, 4th. Return
Sept. 5th, 1905.
For further information see local poster
and nearest Canadian Pacific Agent.
W. H. HARPER,
Agt. Can. Pac. Chatham,
or write C. B. Foster, D.P.A., Toronto.

GRAND TRUNK RAILWAY SYSTEM
Canadian National Exhibition,
Toronto, August 28
to Sept. 9.
\$3.30 from Chatham, going
Aug. 28th to Sept. 9th.
\$3.60 going Aug. 29th to Sept. 4th.
All tickets valid returning until Sept.
25th, 1905.
Farm Laborers' Excursion
\$12.00.
To points in Manitoba and Assiniboia,
going from Chatham Aug. 29th.
For tickets and full information call on
J. C. PRITCHARD, Depot Agent, W. E.
RISPIN, City Agent, 115 King Street,
Chatham; J. D. McDonald, District Pas-
senger Agent, Toronto.

THE WABASH SYSTEM
For Labor Day, Sept. 4
will sell round trip tickets at lowest first-
class fare, good going Sept. 2nd, 3rd and
4th, good to return up to including Sept.
5th, between all stations in Canada, also to
Buffalo and Detroit.
From Sept. 15th to Oct. 31st, the Wabash
will make sweeping reductions in the one
way tourist rates to Arizona, California,
Washington, Oregon, Idaho, Montana, Brit-
ish Columbia, and all Pacific Coast Ports.
The Great Wabash is the shortest and true-
most route to all the above points.
For particulars from any Wabash Agent,
or J. A. RICHARDSON, District Passenger
Agent, North East Corner King and Yonge
Streets; W. E. RISPIN, C.P.A., Chatham,
J. C. PRITCHARD, Depot Agent.

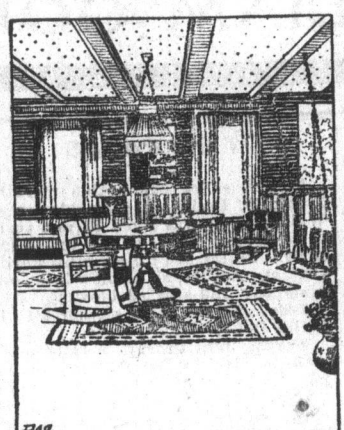
THE HOUSE HOSPITABLE.

The Large Living Hall and the Old
Time Dining Room.

In a home where the household en-
ters into out of door sports the living
hall assumes an air of enjoyable free-
dom that is attained in no other room
in the dwelling. A neighborly soci-
ability, too, fits more easily into the
informal than the formal hall. In fact,
for some people and in some places
there is no pleasanter expression of
family life than in the large, hospita-
ble living hall. For this reason the
example shown in the illustration has
many details that will appeal especial-
ly to the makers of homes.

The lower walls are paneled with
dark wood, and the dark beams in the
ceiling are lightened with buff tinted
plaster. The walls are painted a soft
shade of olive, and an almost indefi-
nite pattern is stenciled upon the
under color in a slightly deeper tone.
The windows have buff colored linen
shades with curtains made of brown
net. Outside are long reaches of val-
leys and distant mountains, and in
curtaining the windows the pictures
painted by nature are merely framed
in and not shut away.

The mahogany table in the center of
the floor has a reading lamp of its own,
and a general light is diffused through
the room by a wrought iron lantern
hanging from the ceiling by an iron
chain. A swinging settle in the cor-
ner, a Davenport sofa and easy chairs
afford comfortable and varied sitting
places for the family. The large spaces
of polished floor are broken up by or-
iental rugs of different sizes.
The dining room takes on a look of
established usage from its old time
furniture. Two drop leaf mahogany
tables are placed against the wall and
used instead of a sideboard and a
serving table. The extension table is



THE CHEERFUL LIVING HALL.

modern, but of good design. However
much we may praise our forefathers
and their ability in cabinetmaking, we
must claim for our own period, al-
though invented by our British coun-
sins, the convenient extension table.

The dining chairs are of Chippendale
pattern with open back and rush seat.
Some of the antique china is kept be-
hind the glass of a quaint hanging
closet, and other pieces are distributed
against the lower wall as appropriate
and pleasing decoration.

The attraction bestowed by the old
time pieces in this room is in vivid
contrast with much of the uninterest-
ing conventional furnishing we often
see in this part of the home.—Designer.

Hunger and Food.
Hunger makes the plainest foods en-
joyable. It causes vigorous secretion
and outpouring of all the digestive
fluids—the sources of ptyalin, pepsin,
trypsin, etc.—without a plentiful sup-
ply of which no foods can be perfectly
digested. Wait for an appetite if it
takes a week. If breakfast is a bore
or lunch a matter of indifference, cut
one or both of them out. Wait for dis-
tinct and unmistakable hunger and
then eat slowly. If you do this you
need ask few questions as to the prop-
erty and digestibility of what you
eat.—Hygienic Gazette.

Pickled Onions.
For pickled onions use the silver
skin variety. Place them in hot water
to protect the eyes while peeling them.
Put into brine for twenty-four hours,
boil up, strain off the brine and dry.
Then bottle, covering with vinegar.
Use white vinegar if you wish to re-
tain the white color. Add some whole
peppers, bruised ginger and a little
sliced horseradish.

Fruit Stains.
Fruit stains may be removed from
tablecloths and napkins by pouring
boiling water through the spots before
the articles are washed. Old fruit
stains are said to yield to freezing.

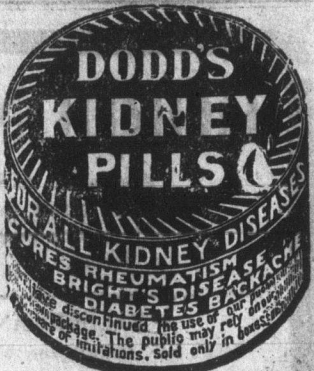
Eckers of Fashion.
The circular cloak seems to be a
favorite in smart fashions. The cir-
cular must have any amount of full-
ness from the shoulders, and perhaps
that is why so many are made of the
softest satin or tulle, and even
chiffon and lace.

The tunic overskirt is frequently
used on afternoon gowns.
Parasols are fussily tucked, shirred,
gathered or puckered to accord with
the skirts of the fashionable summer
gowns.

Boned belts, high and snug fitting,
are cleverly used to give a princess
gown effect with separate bodice and
skirt.

A child's suspender girdle to wear
with a long waisted French dress is
composed of dresden ribbon.
The fashionable sleeve is elbow
length. When long gloves are not
worn little finger undersleeves are
tacked in to extend from elbow to
wrist.

Chiffon voile, very fine and very
sheer, is one of the charming new fab-
rics of the season.



ARE THEY QUALIFIED?

Question re Roman Catholics
For Court of Appeal.

Stated Case Submitted on Command of
Lieutenant-Governor—Question to
Be Decided Is As To Status as
Teachers in Ontario of Members of
Certain Religious Communities In-
stituted For Educational Purposes.

Toronto, Aug. 24.—Is statutory qual-
ification as it applies to the public
schools of Ontario necessary for teach-
ers in the Roman Catholic separate
schools of this Province? The ques-
tion became a momentous one some
time ago, when a lay member of the
Roman Catholic Church in Ottawa ob-
jected to teachers being appointed by
the clergy on the staff of the separate
schools who were not qualified, and
who, he alleged, were forcing duly
qualified Catholic teachers, who could
not in consequence secure positions, to
go to other Provinces. It was decided
to submit the question of qualification
Ontario, and on the strength of the or-
der-in-council, Mr. Thomas Mulvey,
Assistant Provincial Secretary, has
submitted a stated case to the Court
of Appeal.

Commanded to Ascertain.
"I am commanded by the Lieutenant-
Governor," he states in the preamble,
which reached Osgoode Hall yesterday
morning, "to ascertain whether the
members of certain religious bodies are
eligible in the Roman Catholic schools
of Ontario."

Continuing, the document says: "Cer-
tain religious communities are in-
stituted for educational purposes, in-
cluding the Brothers of the Christian
Schools, the Community General Hon-
plial, the Alms-houses of the Sisters of
Learning of the Sisters of Charity of
Ottawa (commonly known as the 'Grey
Nuns'), which in 1867, and for some
years prior, were engaged in educa-
tional work in Lower Canada, and upon
the passing of the British North Am-
erican Act in 1867 were exempt from
examination as teachers" in Quebec.

The Question to Decide.
The question for decision by the
Court of Appeal is as follows: "Are
those who become members of these
communities since the passing of the
British North America Act in 1867 to
be considered qualified teachers for the
purposes of the Separate Schools Act,
and therefore eligible as teachers in the
Roman Catholic Separate Schools of
Ontario, where such members have not
received a certificate of qualification to
teach in the public schools of the Pro-
vince?"

The language of the stated case has
been referred by solicitors for the
Board of Trustees of the Roman Cath-
olic Separate Schools, Ottawa, and five
copies, one for each of the Court of
Appeal judges, have been delivered. The
Court of Appeal will now decide.

Constancy is the complement of all
other human virtues.

The breath of scandal is the ill-
wind that blows nobody good.

TAKE MY CURE,
WHEN CURED YOU PAY ME

The fear that you could not be cured may
have deterred you from taking honest treatment,
or you may have been one of the unfortunates
who have been treated in vain by inexperienced
physicians, free treatments, free trial samples,
patent medicines, electric belts and other similar
devices. Such treatments cannot and will never
cure you, nor will these maladies cure them-
selves. When I offer you a cure, and am willing
to risk my professional reputation in curing you,
and have such faith and confidence in my con-
tinued success in treating these diseases that not
a dollar need be paid until you are cured, a fairer
proposition cannot be offered to the sick and
afflicted. This should convince the skeptical
that I mean what I say, and do exactly as I ad-
vertise, as I am positive of curing you in the
shortest possible time, without injury or after-
effects. My charges will be as low as possible,
for conscientious, skillful and successful services,
and my guarantee is simple and true. Not a
dollar need be paid until cured. I have 14
diplomas and certificates from the various col-
leges and state boards of medical examiners,
which should be sufficient guarantee of my
standing and abilities. It makes no difference
who has failed to cure you, it will be to your ad-
vantage to write to me for my opinion of your
case, which I will give you free of charge. I want
to hear from patients who have been unable to
be cured, as I guarantee a positive cure for all
such cases, or I will refund the money. I accept
for treatment. I not only cure the condition
itself, but likewise all the complications,
such as rheumatism, kidney and bladder troubles,
blood poison, physical and nervous debility, lack
of vitality, stomach troubles, etc. All medicines
for patients are prepared in my own laboratory
to meet the requirements of each individual case.
For patients sent from distant places, all
expenses for duty and transportation prepaid.
I will send a booklet on the subject which con-
tains the 14 diplomas and certificates, entirely
free. Address simply,
Dr. B. Goldberg, 206 Woodward Ave., Suite 311
Detroit, Mich.

FOR OUTING WEAR.

Costume For a Fair Angler—A Good
Automobile Coat.

The popular fancy for checks is ex-
ploited in sporting costumes, which
are very effective, particularly in
black and white. An attractive spec-
imen is in the shape of a "knockabout"
coat and skirt of neutral colored
tweed with overcheck of green and
brown and green suede facing the col-
lar.

The coat, single breasted, as befits
the moment, and close fitting at the
back, has great shapeliness imparted
by skillfully disposed, small stitched
plaits, which serve to emphasize a
similar treatment on the skirt. The
waistband is passed through a slit in
either side front; in fact, two slits are
thoughtfully provided, the one farther
back than the other. It is in these
small details that the chic and style of
such costumes lie.

A long coat has become almost a
necessity, being equally suitable to
driving, motoring and as the smart
practical wrap for race meetings.

One of these very happy combina-
tions of sense and style is fashioned



IN SMART, PRACTICAL STYLE.

In ivory tweed, relieved by black vel-
vet collar facings, belt and buttons.
The back defines the figure closely and
is arranged with three seams, the vel-
vet belt starting from the one at either
side and passing beneath the loose
fronts. For rough wear also the old
dolman shape seems quite a favorite.
A smart new tennis shoe shows the
latest almost triangular looking flat
sole and a three-quarter inch spring
heel and is made up in either white
buckskin, white canvas or black or
tan Russia leather.

The polo cap is a favorite among
the motorists, especially as for long
journeys the veil may be tightly wound
around it. Small soft felt hats fit the
head snugly and gracefully and fill a
want not only on land, but as a steam-
er hat for the seagoers.

J. VERNON WALKER.

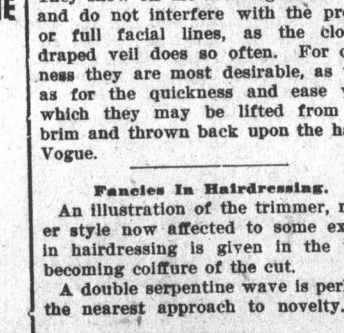
CIRCULAR VELS.

Circular vells are the newest in style,
and under all circumstances they are
exceedingly graceful. When made up
of lace, net or chiffon they are sure to
be greatly admired. Very smart are
they in white or black sprigged lace
by the piece, trimmed on the edge by
both an entre-deux and an edging. Col-
ored vells have the same lace finish,
the trimming laces in most cases being
dyed to match the veil's foundation.
To wear them correctly they require
four hatpins. It goes without saying
that we shall soon find sets of hatpins
four in number, sold in the large shops.
The other day a woman just over was
showing her friends at Narragansett
the sets of four hatpins she had found
in several foreign shops and had se-
lected to be in accord with her dif-
ferent hats. These circular vells dip
only an inch or so below the line of
the chin and hang evenly all round.
They show off the dressing of the hair
and do not interfere with the profile
or full facial lines, as the closely
draped veil does so often. For cool-
ness they are most desirable, as well
as for the quickness and ease with
which they may be lifted from the
brim and thrown back upon the hat-
Vogue.

FANCIES IN HAIRDRESSING.

An illustration of the trimmer, neat-
er style now affected to some extent
in hairdressing is given in the very
becoming coiffure of the cut.

A double serpentine wave is perhaps
the nearest approach to novelty. It



A COIFFURE VARIATION.

extends above the forehead, makes a
curved line at the back, returns in a
modified effect to the temples and ends
over each ear. Short, soft half curls
are arranged above each eye, and a
little bunch of soft curls adorns the
top of the coiffure.

PASS IT ON.

"If any man shall do unto thee any
act of good will or kindly feeling, pass
it on in thy gratitude and seek not to
recompense that man."

... FOR ...
Diarrhoea, Dysentery,
Colic, Stomach Cramps, Cholera
Morbus, Cholera Infantum,
Seasickness,
Summer Complaint,
and all Looseness of the Bowels in
Children or Adults.

DR. FOWLER'S
Extract of
Wild Strawberry

is an instantaneous cure. It has been
used in thousands of homes for sixty
years, and has never failed to give
satisfaction. Every home should
have a bottle so as to be ready in
case of emergency.

MRS. GEORGE N. HARVEY, Rosemead, Ont., writes:
"I can recommend Dr. Fowler's Extract of Wild Straw-
berry as the best medicine I have ever used for
Diarrhoea and all summer complaints. I always keep
it in the house and praise it highly to all my friends."

THE GEISHA GIRL.
It Takes Severe Training to Develop
This Japanese Artist.

There are many geisha training
schools in Japan, but the best of them
all is, I think, the one in Kioto to
which I, with some difficulty, gained
admittance. It is apparently a deli-
cious place, but it is a place of unmiti-
gated toil. The girls are apprenticed
to these schools by their parents or guard-
ians at the age oftentimes of six
years, and for ten years at least they
are put through such a course of train-
ing as would break the spirits of girls
less insured to unquestioning obedience
to authority. Their physical training
is of great importance, of course, and
each little girl must go through such
exercises every day as will keep her
little body flexible as rubber, and after
that is finished she must devote her
time to tasks that far exceed in diffi-
culty any schoolgirl would imagine to
one of us.

No woman of ordinary mind can pos-
sibly become a successful geisha, be-
cause she must be able to acquire and
make use of every kind of worldly
knowledge which will lend to her con-
versation a vivacity and charm that
will lead men to seek her society. The
dancing and the music are the least
of a geisha's attainments as it is un-
derstood by a Japanese. These are
merely an accompaniment to the feast
which is served by small apprentices,
such little girls, indeed, as met us at
the door of the wine red and iris pur-
ple tea house in Kioto, but after the
feast the men must be entertained by
interesting stories and bright repartee
and in this the girls are trained rig-
idly.—Eleanor Franklin in Leslie's
Weekly.

SURPRISE
A PURE HARD SOAP

We have just received a new
shipment of Diamond Rings
which cannot be beaten in qu-
ity or price. Come and see them
before purchasing, and you will
be satisfied.
At the Sign of the Big Clock
A. A. JORDAN

Line, Cement AND Cut Stone.
We keep the best in stock right at
prices.

JOHN H. OLDBERSHAW,
Thomas Street,
Opposite Police
Station...

The Evidence OF YOUR EYES!
IS ALL YOU NEED when
selecting a ring from our
large assortment. We have
rings of all descriptions
From the Plain Band
Monogram and
Ring to a most be-
autiful Diamond.

We have just received a new
shipment of Diamond Rin-
g which cannot be beaten in qu-
ity or price. Come and see them
before purchasing, and you will
be satisfied.
At the Sign of the Big Clock
A. A. JORDAN

To Look Clean Is gratifying.
To be Clean
Is satisfying. You will en-
joy when you place your linen
for we do our work by the
modern methods known
art.

**The Parlour St. C
Laundry Co.** Phone
Covra.

STOP TAKING DRUGS
All diseases successfully treated by
Osteopathy, Chiropractic and
Therapy. Particular attention
nervous and mental troubles w-
men and women. Consultation
R. C. WEBB, D.
Wellington Street West Ch
Covra.

Minard's Liniment Cures G-
Covra.

Fire, Life and Accident
Money to Loan at lowest
rate of Interest.
GEO. K. ATKINSON
Phone 346, 5th Street
Next to Harrison Hall

FRIDAY, FALL

Amherstburg
Blenheim—O
Comber—O
Chatham—S
Dresden—O
Essex—Sept.
Florence—O
Glencoe—S
Highgate—O
Ridgeway—
Rodney—O
Thamesville
Wallaceburg

ALL ABOUT

Everybody
City on Augu
York Central
rate from Sus
sale \$10.25, 60
and giving pri
son River stea
directions bet
York, without
go, Canadian R
Yonge street,
all about it.

THE

To Californ
Union Pacific
quicker to S
between line
detours. "Th
the way. Be
over the Uni
H. F. Carter,
Building, Tor
G. A. A. A.
Detroit.

ALL COMFO

Ohap exco
on August 24
trial and 15
privately to
steamers in e
between Albe
out extra ch
Canadian Pa
Yonge Street
gallars.

WRITE L. D
NION AD
E

He will tel
you can use
ere without
enter Grand
all particula
from Sapsen
good 15 days

BUY

COAL

We han
Wholesale
orders rece
Tel. 253.
G.T.R.

SE

R&O

TORONTO

Steamers leav
Boston, New
Quebec, Mur
Rivers and int
For tickets ap
R. & O. N. Co.
Western Passen

LOW RA

Steamers leav
Boston, New
Quebec, Mur
Rivers and int
For tickets ap
R. & O. N. Co.
Western Passen

RUB

STA

AR
FU

The P

WE I
A LA
Lim
Cem
Sew
Cut

& Etc
and
Pric

J. &
A FEW D

WE
The
Station
Boxes
PLAN

Minard's
M. 7451