

Issued Each Week Only One Dollar a Year

VOL. XXIX.

NUMBER 15.

FARM AND DAIRY

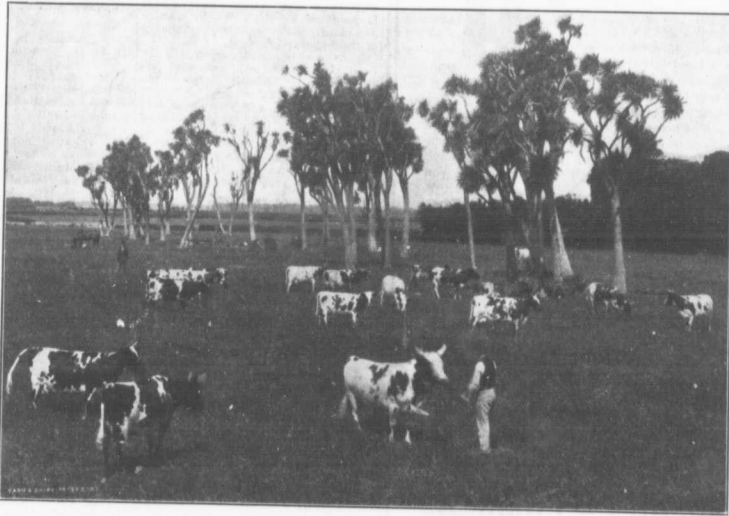
AND

RURAL HOME

Dairy and Cattle Division
Commissioner

PETERBORO, ONT.

APRIL 14, 1910.



AYRSHIRES IN NEW ZEALAND, CHEESE FROM WHICH COUNTRY COMPETES WITH OURS.

Ayrshires are a popular dairy breed in New Zealand. One of its fine herds is here shown. Good stock and fertile soil has enabled this country to gain its present standing in the great market of the world. New Zealand cheese is practically the only cheese of its kind imported into Great Britain in competition with Canadian. During the past year, we heard much of this New Zealand competition. Dairy Commissioner Rudlick assures us that its significance, however, has been unduly exaggerated, and that the total increase from New Zealand is not nearly as large as the decrease in Canadian shipments. While this is true, it behooves Canadians to see that the competition is met with the best quality of goods.

DEVOTED TO
BETTER FARMING AND
CANADIAN COUNTRY LIFE