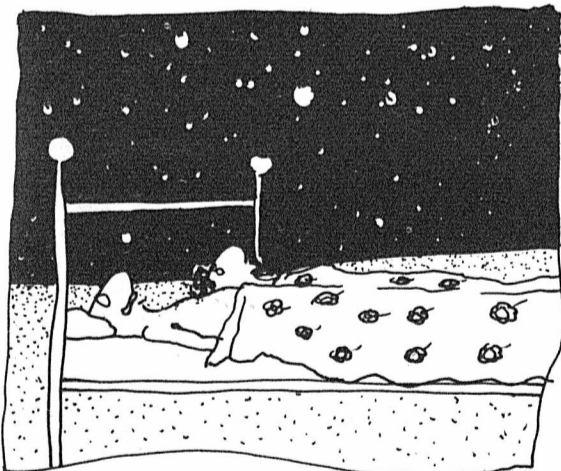
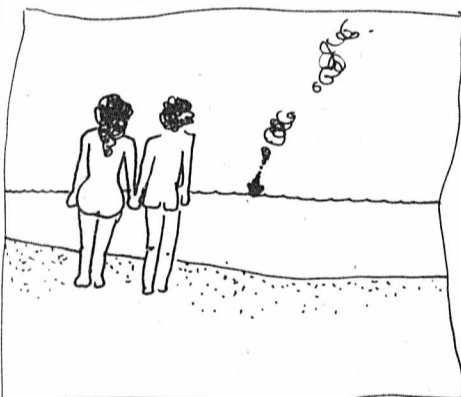
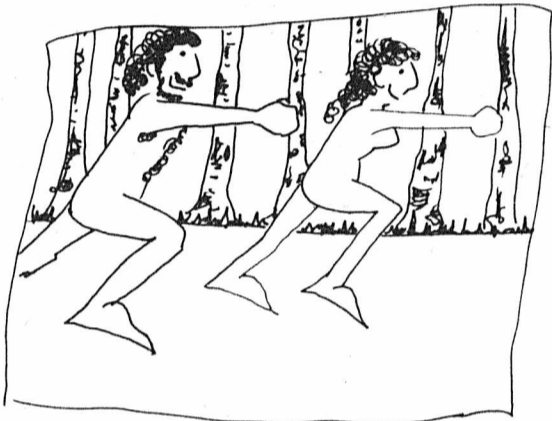
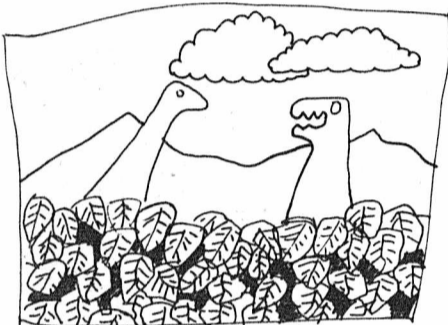
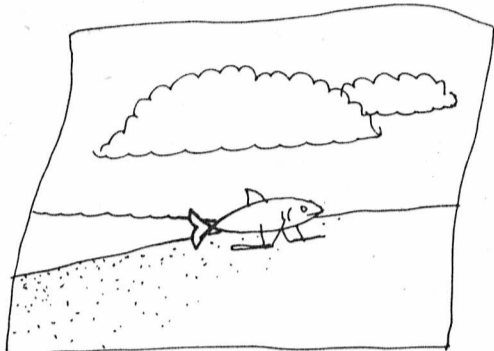
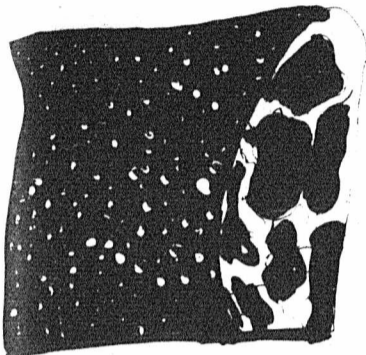
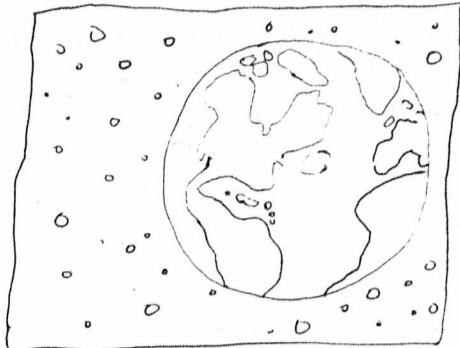
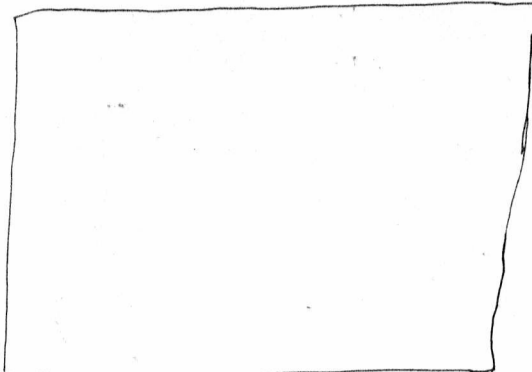


IN THE BEGINNING

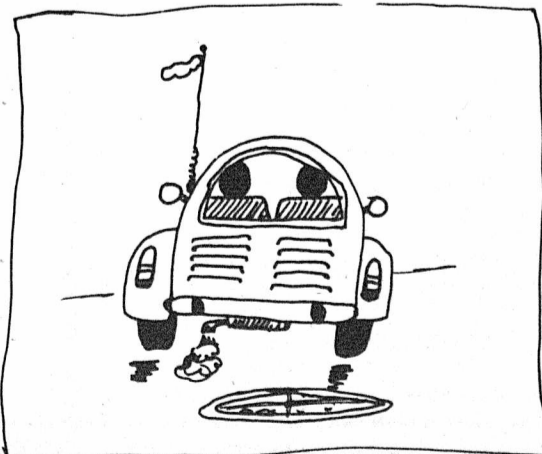


Do you BELIEVE THAT **ONE** SUPREME ARTIST CREATED ALL OF THIS MANY FRAMES AGO?

YEAH!

THEN WHO DREW HIM?
HA HA, GOTCHA THERE!

THAT'S THE PROBLEM WITH MOST PEOPLE, THEY TRY TO BE LOGICAL ABOUT EVERYTHING, BUT LIFE OUTSIDE THE FRAMES ISN'T LOGICAL.



HOOSIER

Evolution Week

If last week was "North-West Territories Week," this seems to be "Evolution Week." By the time this letter is read, Dwayne Gish will have done his skillful best to attack the genetic evidence for evolution; Thursday evening, John Habgood will present a more positive view of evolution from a Christian standpoint. If the relationship of revelation and science is a living issue for you, or more particularly if you are concerned to relate the physical evidence and the biblical account, this week is a good opportunity.

For my part, although I am interested in relating faith and science, I cannot understand what all the excitement is all about. To me, the first chapter of Genesis is an evolutionary view of nature, with God the invisible guide; and the physical evidence for evolution is an inspiration to wonder at the sweep of God's guidance. We need to distinguish between evolution as a description of the shape of events, and naturalistic accounts of the mechanism producing evolution which leave out any recognition of a transcendent Purpose.

But where is Evolution at today? Where is the creative initiative of the God who "works yet", in our day? Where is the growing edge?

In the struggle for justice between human beings; in the search for a way of life that will not destroy this jewel of a planet we are on; in respect for the Earth God made, and his image in our neighbours - that is where, we must look for the future, for the long struggle to give birth to a humanity that measures up to wholeness we see in Jesus. That is the purpose into which we are all called.

So maybe "North-West Territories Week," with its challenge to our sense of justice and ecological sensitivity, was on the fore-front of evolution and/or re-creation.

Fletcher Stewart

Gateway

Member of Canadian University Press

Published twice weekly by the University of Alberta Students' Union in the Gateway Offices, Room 282, Students' Union Building.

Volume LXVI, Number 36
March 16, 1976

SENIOR EDITORS

Editor: Greg Neiman
News: Kim St. Clair
Features: Kevin Gillese
Arts: Lindsay Brown
Sports: Darrell Semenuk
Graphics: Craig McLachlan
Photo Editor: Bob Austin
Footnotes: Marg Reed

STAFF

Susan D. Poohkay
Brian Bergman
Ken Larson
Nancy Brown
Willie Campbell
Brian Gavriloff

CIRCULATION

Circulation 18,000. The Gateway publishes on Tuesday and Thursday during the Fall and Winter Sessions. It is distributed to the students, academic, and non-academic staff on campus.

Subscription Rates: \$10.00 for 67 issues

Circulation Manager: Jim Hagerty

ADVERTISING

No mats accepted. National and local advertising \$ 28 per agate line. Classified Ads, 10c per word. All classified ads must be prepaid.

Advertising Manager: Tom Wright
432-3423

PRODUCTION

Ad make-up, layout and typesetting done by Media Productions, University of Alberta, Room 238, Students' Union Building.

Production Managers:
Loreen Lennon
Margriet Tilroe-West

FOOTNOTES

Publicizes campus events or those of interest to students, without charge. Footnote forms available at the Gateway office and should be submitted before 2 p.m. Mondays and Wednesdays.

LETTERS

Submit all letters, typed and double-spaced to the Editor, who reserves the right to edit copy. Regular copy deadlines apply.

Opinions expressed in the Gateway are those of the writer, and are not necessarily those of the Gateway.

GRAPHICS

Submit all graphics, cartoons, and illustrations to Graphics Editor by normal copy deadlines.

COPY DEADLINES

Monday noon for the Tuesday edition; Wednesday noon for the Thursday edition.

TELEPHONES

Editor's office:
432-5178
All Departments:
432-5168
Media Productions:
432-3423