

Refer to this map as: 41-O/7 EDITION 1 ASE SERIES A 751

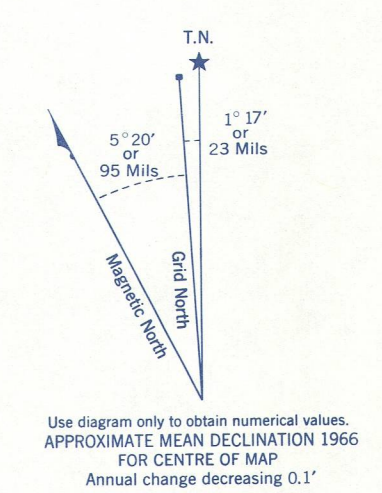
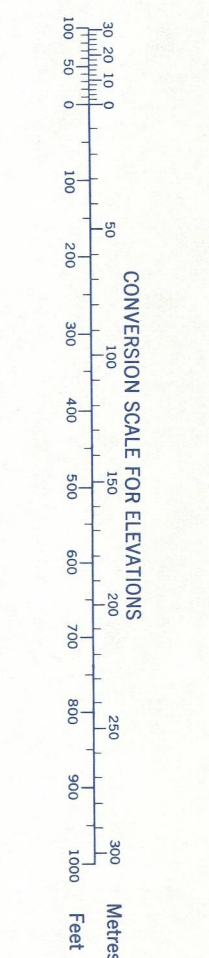
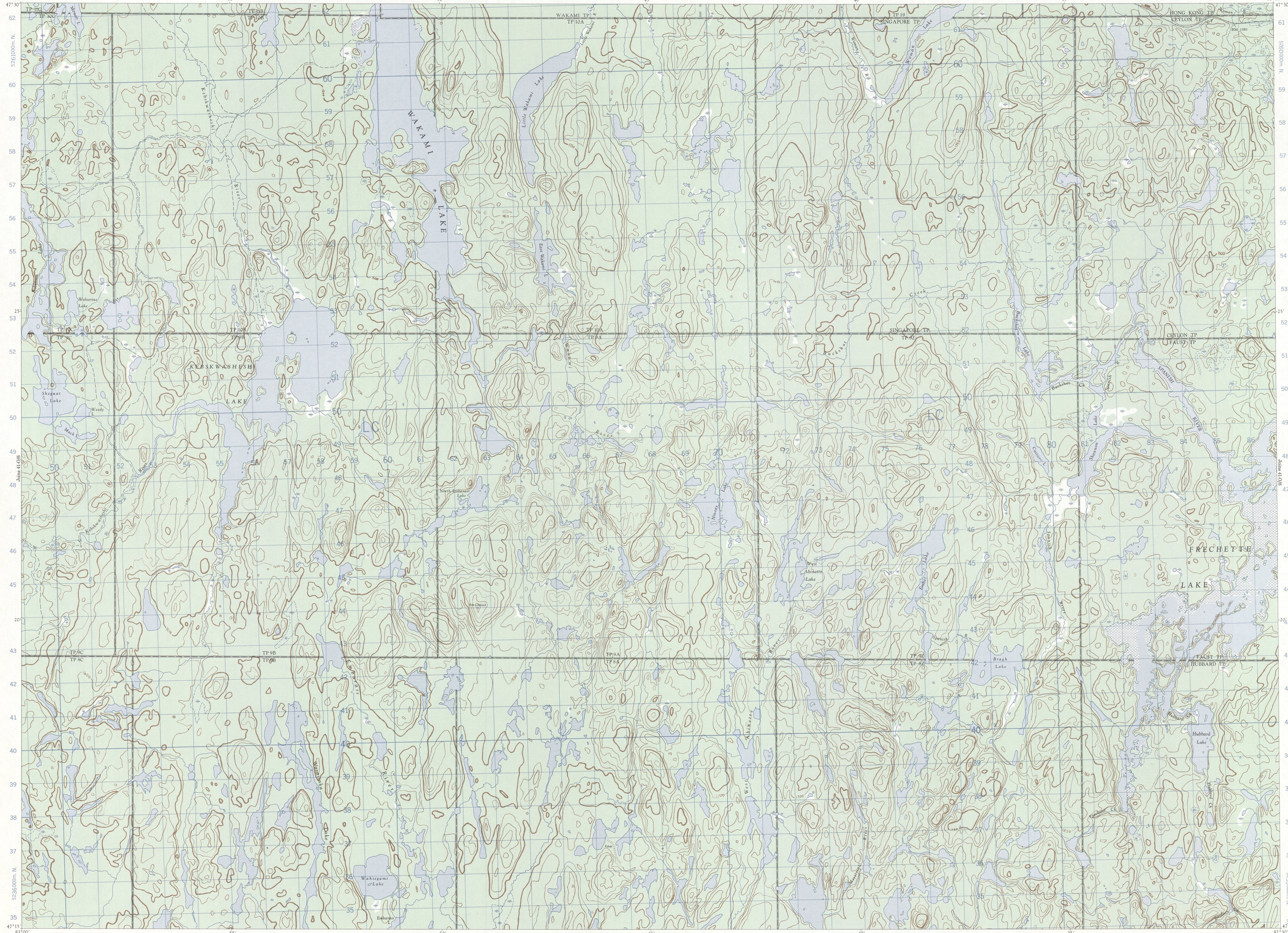
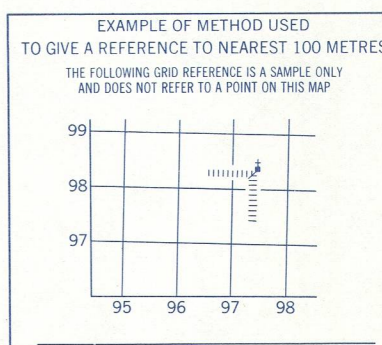


Table with 2 columns: GRID ZONE DESIGNATION (17 T), 100,000 M. SQUARE IDENTIFICATION (LC)



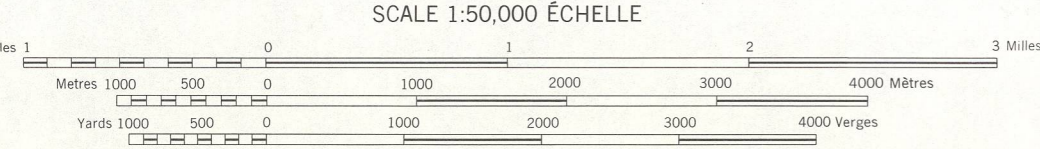
REFERENCE POINT CHEVRON (as above) EASTING: Road number on grid line immediately to left of point... NORTHING: Road number on grid line immediately below point...

ONE THOUSAND METRE UNIVERSAL TRANSVERSE MERCATOR GRID ZONE 17

Produced 1966 by the SURVEYS AND MAPPING BRANCH, DEPARTMENT OF ENERGY, MINES AND RESOURCES...

Roads: loose surface, dry weather... Routes: de gravier, période sèche... cart track... de terre

WAKAMI LAKE SUBURRY DISTRICT ONTARIO



CONTOUR INTERVAL 50 FEET Elevations in Feet above Mean Sea Level... Projection Transverse Mercator

EQUIDISTANCE DES COURBES 50 PIEDS Elevations en pieds au-dessus du niveau moyen de la mer... Projection Transverse de Mercator

Some names on this map are not yet official... Corrections or additions are invited by the Surveys and Mapping Branch.

Établi en 1966, par la DIRECTION DES LEVÉS ET DE LA CARTOGRAPHIE, MINISTÈRE DE L'ÉNERGIE, DES MINÈRES ET DES RESSOURCES... Imprimé en 1966.

SUPERSEDED EDITION

