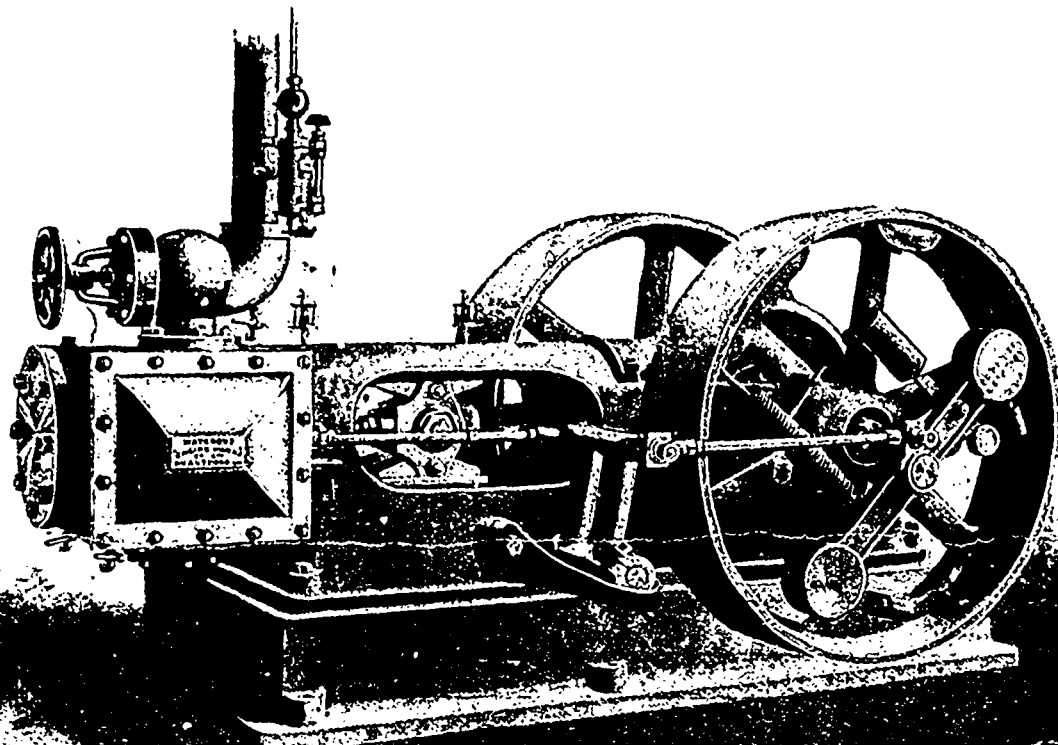


The McEwen Automatic Engine

BUILT IN CANADA BY

THE WATEROUS ENGINE WORKS CO., BRANTFORD



Perfect Balance—photographs of 50 h.p. placed on rollers, not held down by bolts or otherwise, running at full speed, show Engine clear cut and still except in reciprocating parts.

Ample Weight—to take all the thrust and stroke of engine, ensuring cool and noiseless movement.

Simplicity of Construction—and ease of access—a slide valve anyone can understand and adjust—crosshead easily adjusted.

Shaft—a double crank, forged and slotted from the solid bar—properly counterbalanced with crank pin same size as bearing—a perfect construction—running cool, noiseless, giving no trouble.

GUARANTEE:

Regulation—Here's our guarantee:

"The engine shall not run one revolution slower when fully loaded than when running empty, and a reduction of boiler pressure from the greatest to that necessary to do the work will not reduce the speed of engine one revolution. Any engine failing to meet this guarantee becomes the property of the purchaser upon payment of one dollar."

Price—a fair one considering quality, weight and merit.

These Engines are running most satisfactorily—driving saw mills, wood-working, electric and other plants in Canada.

WATEROUS, BRANTFORD, CANADA