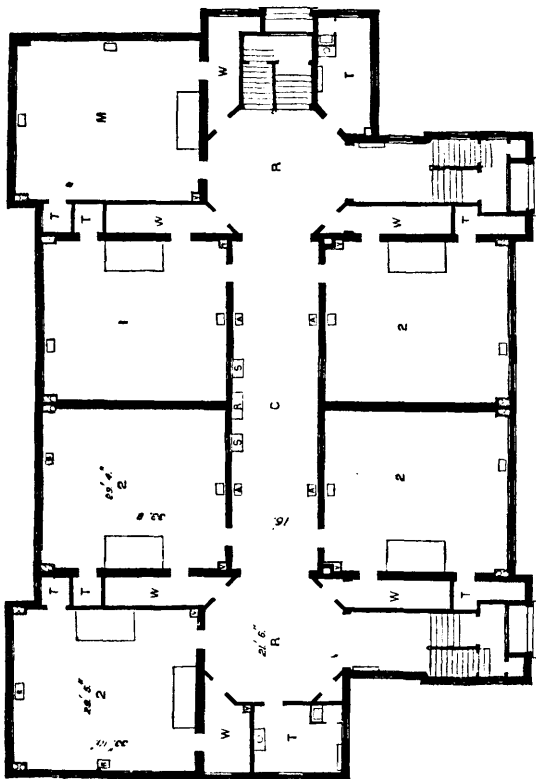


Plan of the Interior of a double School-house, No. 3.

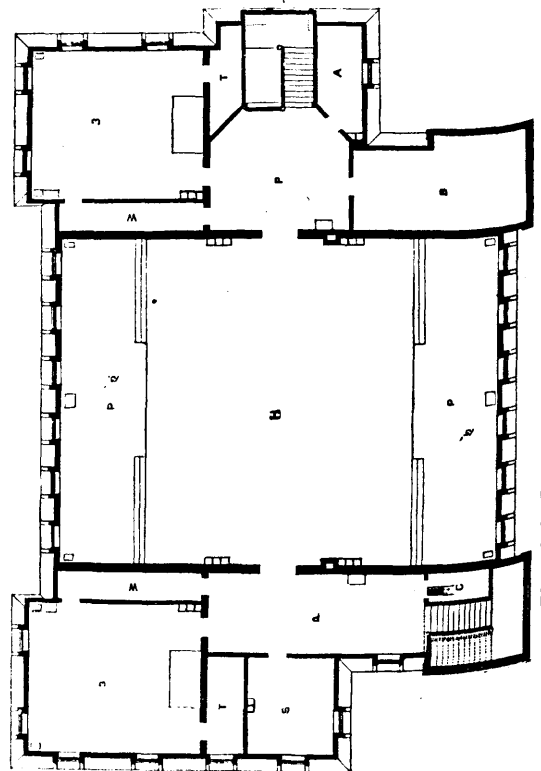
cations to understand the requirements of his school, with respect to this prime condition of its success, to realize deeply the importance of attending to this fundamental consideration relative to the life and health of his pupils. Such is the liability to neglect duty in this respect, that we are led to suggest the introduction of ventilation as a part of the daily programme of exercises. At proper intervals, specified as distinctly as for the various recitations, let there be provided a renewal of the air of the room. Some general exercise—all the better if it be a physical one, as a vigorous calisthenic drill—may be arranged for the same time. If some such plan were adopted, we are sure that the evils arising from want of the requisite architectural means of ventilation in our school rooms, would be very materially abated.—*The School.*

3. PLANS OF SCHOOL INTERIORS.

We insert in this number of the *Journal* five plans of School-house interiors, which are intended to aid School Trustees in arranging the interiors of their schools. We have designedly omitted the names of the different rooms so as to leave the Trustees free to apply them to such uses as they may see fit. The advantage of a double school over a single one is obvious, especially as Trustees are required to employ one teacher for every fifty pupils. This would necessitate two or more school-rooms and other appliances. Educationists are nearly unanimous in recommending, for convenience and health, single story School-houses instead of those of two and three stories.



Plan of the Interior of a double School-house, No. 4.



Plan of the Interior of a double School-house, No. 5.