

but with no slackening of values to be noted. Dried fruits show an advancing tendency in Denia, London and New York, and any lots brought in when present supplies on spot are exhausted, will have to be brought at higher prices, besides bearing the advanced winter freight rates; in meantime prices remain as last week quoted. Rice very firm, spices and tobaccos without change, and canned goods also.

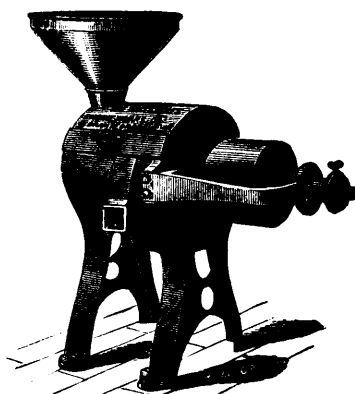
**LEATHER.**—Trade is again reported very quiet indeed. Quite a few shoe manufacturers are getting ready to take stock, and of course are anxious to buy just as little as possible in the meantime. Quotations can hardly be changed as yet, though values are easier, more particularly for Quebec stock. Some very fair sized shipments are going to England by last steamers now loading, but the market there is expected to weaken as a sequence to the financial pressure existing. We quote:—Spanish sole, B. A., No. 1, 21 to 23c.; do., No. 2, B. A., 20 to 21c.; No. 1, ordinary Spanish, 21 to 22c.; No. 2, ditto, 19 to 20c.; No. 1, China, 19 to 20c.; No. 1 slaughter, 22 to 25c.; No. 2 do., 21 to 22c.; American oak sole, 39 to 43c.; British oak sole, 38 to 45c.; waxed upper, light and medium, 33 to 36c.; ditto, heavy, 31 to 35c.; grained, 32 to 34c.; Scotch grained, 32 to 37c.; splits, large, 19 to 25c.; do., small, 15 to 16c.; calf-splits, 32 to 33c.; calfskins (35 to 40 lbs.), 50 to 60c.; imitation French calfskins, 65 to 80c.; russet sheepskin linings, 30 to 40c.; harness, 23 to 29c.; buffed cow, 12½ to 15c.; pebbled cow, 12½ to 15c.; rough, 20 to 25c.; russet and bridle, 45 to 55c.

**METALS AND HARDWARE.**—There is nothing of a movement to be noted in these lines, the dulness complained of even exceeding that of last week. About the only article in demand is coke tin, for which canners of vegetables, &c., are offering \$4.25, but holders are very firm at \$4.50. For pig iron, Canada plates, or metals generally there is no enquiry. Most lines are cabled lower, doubtless due to the monetary pressure at home; ingot tin shrank 30/ in a couple of days, copper 17/6d., though in good statistical condition; warrants at last cable were at 50/5d., over a shilling lower than a week ago. We quote:—Coltness, no stock to import, \$24.00; Calder, No. 1, \$23.00; Calder, No. 3, \$21.50; Summerlee, \$23.00 to 24.00; Eglinton \$20.00 to 21.50; Gartsherrie, \$23.00; Carnbroe, \$21.50 to 22.00; Shotts, \$22.50 to 23.00; Middlesboro, none here; cast scrap railway chairs, &c., \$20.00; machinery scrap, \$19.00 to 20.00; common ditto, \$13; bar iron, \$2.25 to 2.30 for Canadian, British \$2.50; best refined, \$2.75. The products of the Londonderry Iron Company we quote as follows: Siemens' pig No. 1, \$23.00; Acadia bar, \$2.20; Siemens' bar, \$2.35; these figures for round lots. Canada Plates—Blaina, \$3.10; Swansea, \$3.10; Penn., \$3.25. Terne roofing plate, 20x28, \$8.00 to 8.25. Black sheet iron, No. 28, \$2.80. Tin plates—Bradley charcoal, \$6.50 to 7; charcoal I.C., \$4.75 to 5.00; do. I.X., \$5.25 to 6.00; coke I.C., \$4.50; coke wasters, \$4.25; galvanized sheets, No. 28, ordinary brands, 5½ to 5½c.; Morewood, 7c.; tinned sheets, coke, No. 24, 6½c.; No. 26, 7c.; the usual extra for large sizes. Hoops and bands, per 100 lbs., \$2.70 to 2.75; Staffordshire boiler plate, \$2.80 to 3.00; common sheet iron \$2.75 to 2.90 according to gauge; steel boiler plate, \$3.00; heads, \$4.00; Russian sheet iron, 10½ to 11c.; lead per 100 lbs., pig, \$4.00 to 4.25; sheet, \$4.75; shot, \$6 to 6.50; best cast steel, 11 to 12c.; spring, \$2.50; tire, \$2.50 to 2.75; sleigh shoe, \$2.50 to 3.00; round machinery steel, \$3.25; ingot tin, 24c.; bar tin, 26c.; ingot copper, 16 to

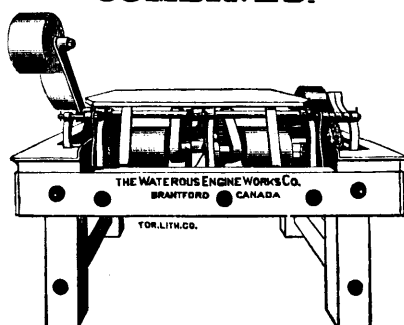
16½c.; sheet zinc, \$6.50 to 7.00; spelter, \$6.25; antimony, 00 to 20c.; bright iron wires Nos. 0 to 8, \$2.75 per 100 bls.; annealed do., \$2.75. Coil chain, ½ inch, 5½c.; ¾ in., 4½c.; 7-16 in., 4½c.; 1 in., 4½c.; 1½ in., 3½c.; 2 in., 3c.; 2½ in., and upwards, 3½c.

**OILS, PAINTS AND GLASS.**—Linseed oil is weaker at home, and easier locally at 68 to 69c. per gallon for boiled; raw the usual 3c. lower; turpentine, 61 to 62c.; castor still steady at 11½ to 12c. per lb., with light supplies here; Nfld. cod oil pretty firm at 40 to 42c.; steam refined seal 54 to 55c. in a jobbing way. Nothing new in leads; ochres and Venetian reds are now generally held at the prices as advanced by us a week or so ago. We quote:—Leads (chemically pure and first-class brands only) \$6; No. 1, \$5 to 5.50; No. 2, \$4.75; No. 2, \$4.50; dry white lead, 5½ to 6c.; red do., 4½c.; London washed whiting, 50c.; Paris white, 90c. to \$1; Cookson's Venetian red, \$1.60 to 1.75; other brands of Venetian red, \$1.40 to 1.60; yellow ochre, \$1.50 to 1.75; spruce ochre, \$2.25 to 2.50. Window glass, \$1.50 per 50 feet for first break, \$1.60 for second break; 5c. off for 100 box lots.

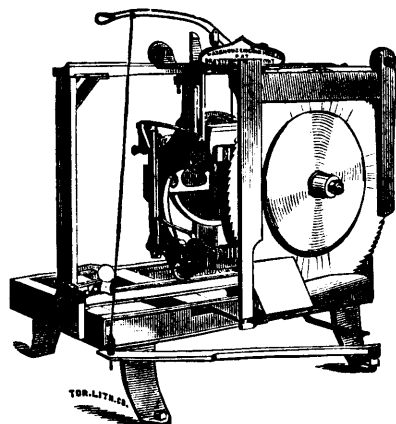
## SHINGLE MACHINES.



## Lath Mills and Bolters COMBINED.



## BUHR STONE CHOPPERS



ALL THE BEST OF THEIR KIND.

Send for new Circular stating machinery required as each department has separate circulars.

**Waterous Engine Works Co.,**  
BRANTFORD.

## TORONTO MARKETS.

TORONTO, Nov. 20th, 1890.

**DRUGS.**—Business is fair and money quiet; only large parcels are now moving. Quotations all round are unchanged, and abroad there is little or no excitement in drug circles. Silver and silver preparations are easier, but cannot be considered steady.

**DRY GOODS.**—Owing to the continued mild weather, the movement during this sorting season so far has not been up to expectations. On the other hand very few complaints are heard as to payments. The chief lines of goods being purchased at present are hosiery, underwear and gloves. For mantle cloths in fawn and other fashionable shades quite a demand exists. The recent advance in price of real seal has created a brisk demand for sealettes. Velveteens are also largely enquired after, and some enquiry after colored silk velvets for trimming purposes, being principally used for better class goods. Heavy woollen dress goods fairly active, blankets only in moderate request.

**FISH.**—This market is quiet, the present being the close season for whitefish and trout. There is a supply of frozen fish on hand, but the weather being so mild, the sale is slow. Prices are as follows:—Trout and whitefish, 6½ to 7c. per lb.; haddock, 6c.; cod steaks, 8c.; herrings, \$2 to 2.25 per hundred. British Columbia salmon is selling at 15c. per lb.

**FLOUR AND OATMEAL.**—The flour market still keeps very quiet; present values, however, are considerably above export prices, which rule about \$4 per barrel. All our quotations remain unchanged, with the exception of strong bakers', which shows a reduction of 10 to 20c. per barrel, being now quoted at \$5.30 to 5.40. Oatmeal is reported firm and unchanged. Bran is still scarce, ruling at \$15 per ton for small lots and \$14 per car lots.

**GRAIN.**—Winter and spring wheats are at unchanged prices, the demand being principally for milling purposes; for export we have heard of no transactions. The American markets during the week have receded from 5 to 6c. per bushel, and the English markets have been on the decline during the same period; the disturbance in financial circles no doubt helping considerably to lower market values. In Manitoba hard wheat Nos. 1 and 2, prices have receded about 4c. per bushel, No. 1 being now quoted at \$1.10 to 1.14, No. 2, \$1.07 to 1.08; the reduction in values is partially caused by the larger receipts coming on the market, the volume of which would still be considerably augmented, provided railway cars were supplied, anything equal to the demand for them, to move the crop. Barley is quiet and if anything a little easier; we hear of car lots and smaller lots

## WILLIAM KENNEDY & SONS,

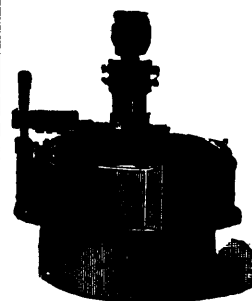
OWEN SOUND, ONT.

MFRS OF THE

"New American"

TURBINE

Heavy Mill Work.



Water Power Pumping Machinery for Domestic and Fire purposes.

Plans, Estimates, and Superintendence for Construction of Municipal Water Works and Improvement of Water Powers.

## SIMPSON & CO.

BERLIN, - ONT.

Best value and latest styles in

Church, Lodge and Barber Chairs

Drawing Room, Dining Room & Bedroom

## FURNITURE.

Clapp's Patent used on Drawer work which prevents sticking in damp weather.

Wholesale & Retail Manufacturers.

The Wholesale Dry Goods' Section of the Board of Trade of the City of Toronto.

SECRETARY'S OFFICE,  
TORONTO, October 15th, 1890.

## INSURANCE AGREEMENT.

To Whom it May Concern:

WHEREAS, the losses sustained by fire having been found to be most serious, and an evil requiring united action, the Wholesale Dry Goods' Trade have agreed that they will not consent to, or accept, any compromise from the customers when it is found that the failure has been caused through insufficient insurance.

And in furtherance of this object they have agreed that the minimum amount of insurance on the stock, chattels and buildings must be at least 60% sixty per cent. of their value, under this agreement.

By order.

EDGAR A. WILLS, Sec.-Treas.