

Miscellaneous.

STRYCHNINE DELIRIUM.--Those members of the medical profession who have employed caffeine very largely in the treatment of cardiac and renal disease have recognized that large doses of this drug, continuously administered for a considerable period, developed in certain individuals what has been properly called "caffeine craziness." In other words, the full medicinal doses required by the condition of the heart or kidneys have also been sufficiently large not only to produce an increased activity of the brain, such as is seen when coffee is taken in large amounts, but also have gone farther than this, and by the very cerebral stimulation produced temporary insanity. Within the last few years the medical profession has been employing in certain states what may be considered a massive doses of strychnine in the treatment of failing respiration or circulation, and

has obtained therefrom very good results. It having been found that these full doses of strychnine acted favorably, when given in an emergency, we have been tempted to continue their administration where the symptoms were relieved but temporarily, and, as a result, have oftentimes been pleased with their effect. On the other hand, a sufficient number of cases have been seen in which cerebral disturbance has followed these large doses to put us continually on the lookout for such untoward symptoms. As a rule, he who administers large doses of strychnine in an emergency is on the *qui vive* for some twitching of the muscles of the forearm or other portion of the body as an evidence of the physiological action of the drug. While we believe that these symptoms are commonly produced by a single administration of the remedy, we are also confident that its con-

ROTHERHAM HOUSE.

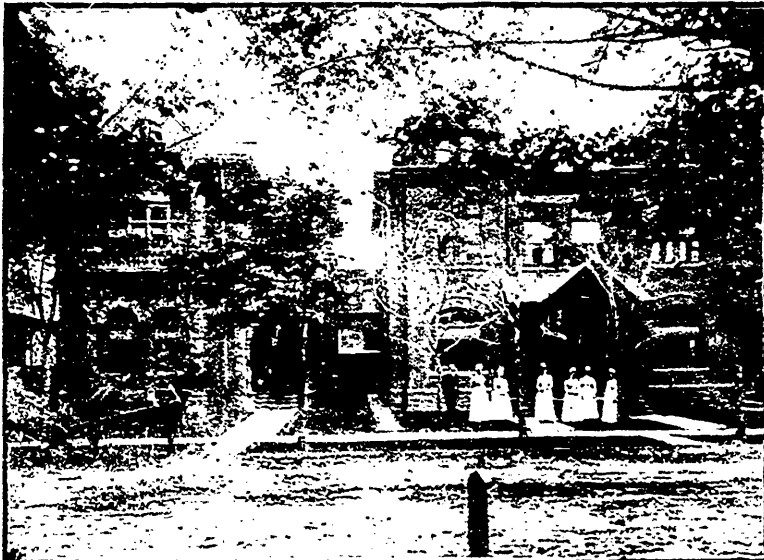
HOLFORD WALKER, M.D.

WILLIAM NATTRESS, M.D.

A Private Hospital for Diseases of the Nervous System (both sexes), Surgical and other diseases of women, Rheumatism, Incipient Phthisis, etc.

The institution comprises three buildings, thus securing perfect quiet when desired.

The flat roof has been converted into a large promenade deck, securing a cool breeze at all times in summer.



The Hospital is situated in the most healthy locality in Toronto, on the height of land, and, being only a few yards from the Yonge and Church Street motors, is within ten minutes to centre of city, station or wharfs.



ELECTRICITY
in its various forms is resorted to in all suitable cases.

Trained Nurses for General Nursing, or Masseuses for Massage, can be obtained on application. Also a *Masseur for the administration of Massage to men.

For Terms, or other information desired, address
HOLFORD WALKER, M.D., Isabella St., TORONTO.