

Mr. Jackson's diagram on p. 177 cannot be adopted. The Sternorrhyncha must have branched off from the main Homopterous stem before the latter was differentiated into superfamilies, while the association of the

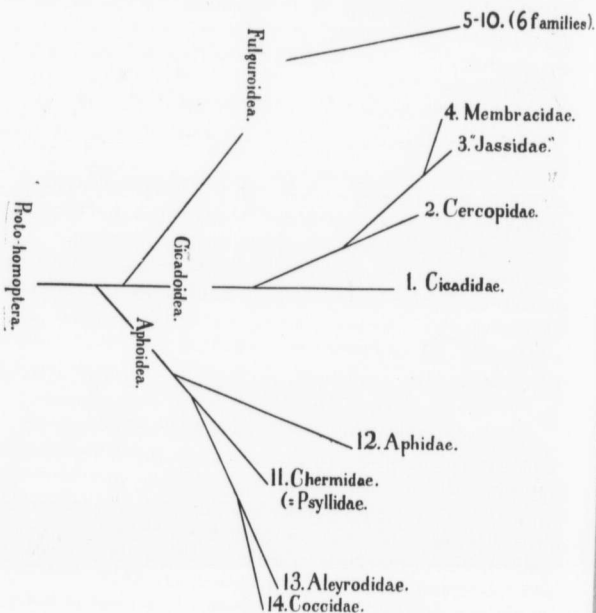


FIG. 9.

Cercopidae and "Fulgoroidea" as "twin twigs" of a branch almost equal to the Membracidae or "Jassidae," is positively ridiculous.

The following represents more accurately the course of Homopterous evolution: The Fulgoroidea are much more distinct from the rest of the Sternorrhyncha than these are among themselves; the Cercopidae, Membracidae and "Jassidae" are all very closely allied, the Membracidae being simply highly specialized "Jassidae."

I have not sufficiently studied the Sternorrhyncha as yet, but I think they form only one superfamily, which may be termed "Apherodea."