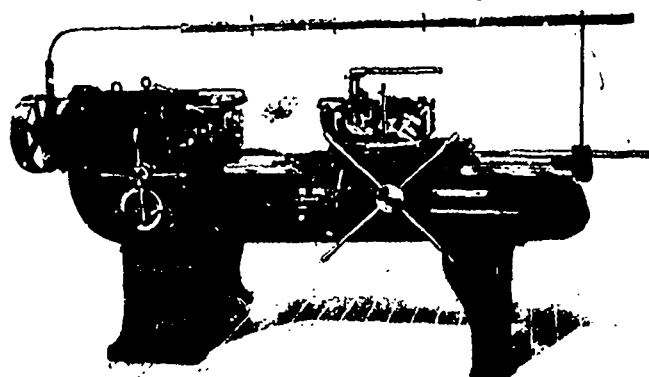


The JONES & LAMSON or HARTNESS Type



FLAT TURRET LATHE

As built by the STEVENS COMPANY
of Galt, Limited

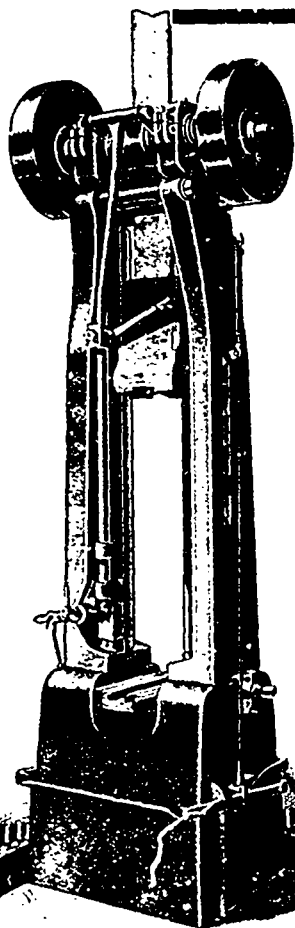
Workmanship the very highest. All the features of the United States Machine, together with many desirable additions of our own.

The Flat Turret Lathe is now recognized as indispensable in all machine shops, it being a **remarkable profit-maker.**

INVESTIGATE THOROUGHLY AND YOU WILL KEEP YOUR MONEY IN CANADA.

Ask for Catalogue describing this machine.

THE STEVENS COMPANY OF GALT, Limited - GALT, Ontario



Canadian Billings & Spencer Ltd.

WELLAND, Ont.

DROP FORGINGS



MACHINE WRENCHES, LOCOMOTIVE and
CAR FORGINGS, CRANK SHAFTS

CONNECTING RODS

AUTOMOBILE FORGINGS

LATHE DOGS, EYE BOLTS



All Machinery Parts in Steel, Iron, Copper
and Bronze



Send Model or Drawings for Estimates

American Works, The Billings & Spencer Co., Hartford, Conn.

When writing to Advertisers kindly mention THE CANADIAN MANUFACTURER.