

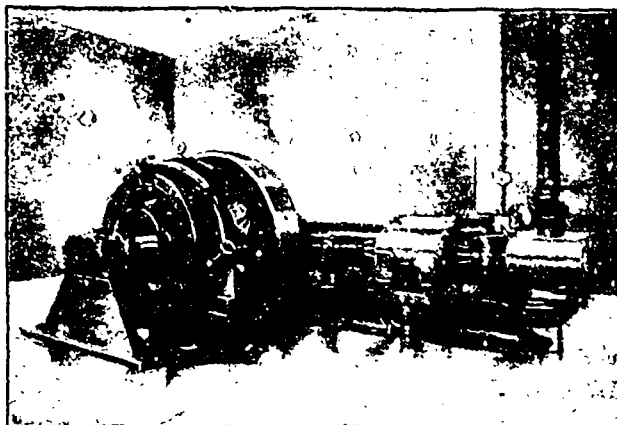
IDEAL HIGH SPEED ENGINES

PERFECTION IN HIGH SPEED ENGINE DESIGN, NOISELESS RUNNING,

PERFECT
LUBRICATION

ACCESSIBILITY

ECONOMY



ASK FOR
BULLETIN No. 6

QUOTATIONS
CHEERFULLY
GIVEN

THE GOLDIE & McCULLOCH CO., LIMITED

GALT ——— ONTARIO ——— CANADA

WE MAKE Wheelock Engines, Corlies Engines, Ideal Engines, Boilers, Pumps, Flour Mill Machinery, Oat Meal Mill Machinery, Oat Meal Steam Pan Kilns, Wood Working Machinery, Iron Pulleys, Wood Rim Split Pulleys, Shafting, Hangers, Gearing, Friction Clutch Pulleys, Friction Clutch Couplings, etc., Safes, Vaults and Vault Doors.

Western Branch: 248 McDermott Ave., Winnipeg, Man.

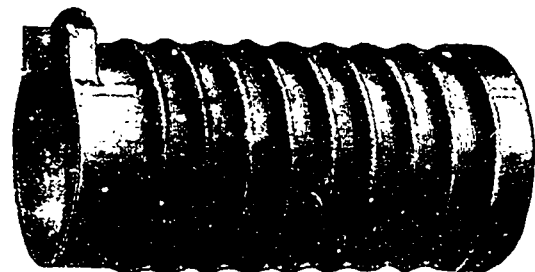
Quebec Agents: ROSS & GREIG, Montreal, Que.

MORISON Suspension Furnaces

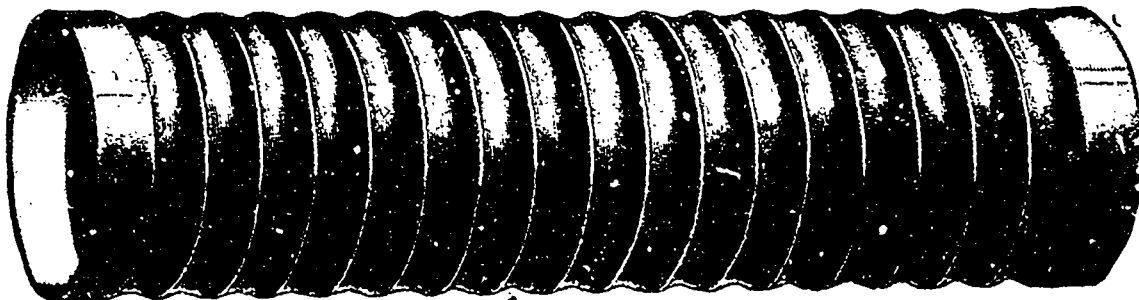
For Land and Marine Boilers

With Plain Ends or Flanged to any required shape.

Uniform Thickness, Easily Cleaned, Unexcelled for Strength, Unsurpassed for Steaming Capacity.



The universally satisfactory record of "THE MORISON" proclaims it the best furnace made.



MANUFACTURED BY

THE CONTINENTAL IRON WORKS,

WEST AND CALYER STS.,
BOROUGH OF BROOKLYN,
Near 10th and 23rd Street Ferries.

New York

Sole Canadian Agent—MR. GEORGE HOLLAND, M. C. Soc. C. E., P. O. Box 529, MONTREAL

RECEIVED BY THE MANUFACTURER MARCH 1 1907