

condensers draw their supply, there is also a brick tank for receiving the condensation and water for the condensers, and from this the water supply for the boilers is pumped. There are two condensers and two pumps, the pump connections being so arranged as to supply one or both boilers. The floor of the basement is of pressed brick laid on edge.

An unusual appliance in electric light stations is here to be seen in the shape of a gas meter. The building is piped throughout for gas, which is used by the employees when the electric plant is shut down on moon light nights.

The engine room contains a Wheelock cross compound engine of 150 horse power capacity. This engine is mounted on a solid stone foundation extending down 9 feet below the basement floor. The driving wheel is 13 feet diameter, and 22 inch face; there is also a single cylinder condensing engine of 100 horse power, with a fly wheel 11 ft. 6 in. diameter and 20 inch face, the foundation for which corresponds to that of the larger engine. This engine was the one formerly used, and was moved from the old station. There is a counter-shaft driven off main shaft for operating the pumps and condensers. Adjoining the engine room, and separated from it by a 36 inch wall, is the oil room.

The dynamo room contains four arc and one incandescent dynamos, viz., 75 light, 35 light and 25 light Ball machines, a 50 light Reliance machine and a 500 light Royal alternating incandescent machine. The 50 light Reliance and 65 light Ball dynamos are used to supply current to the street circuits, and the smaller machines to furnish current for commercial business. These dynamos are belted to a line of shafting extending from end to end of the building; each dynamo is driven from a clutch

pulley, and can therefore be operated independently or in conjunction with all the others.

The switch board has been erected in the north corner, beneath the wire tower, and is fitted with the usual current indicators, etc. The engine and dynamo rooms are connected by call bells and speaking tubes.

The millwright work and power plant were supplied by Messrs. Goldie & McCullough, of Galt, and the belting by the J. C. McLaren Belting Co., of Montreal.

The architect who designed and superintended the construction of the building, is Mr. John Day, of Guelph.

As most of our readers are probably aware, the electric light and gas interests of the city are under one control. The president of both companies is Mr. D. Guthrie, Q.C., M.P.P., and the vice-president, Mr. Richard Mitchell. Both of these gentlemen have held similar relations to the gas company from the time of its inception, twenty-two years ago. The management of both companies is in the hands of Mr. John Yule, who has filled the position of manager of the gas company most satisfactorily during the last 21 years. Mr. C. J. Jordan, the electrician in charge of the plant, has also been with the Electric Light Co. from its inception.

The company is a most enterprising one, and is now in possession of one of the most substantial and best arranged central stations to be found in the Dominion. It is their intention, we understand, shortly to install a power generator to

furnish electric power for manufacturing purposes; the opening for business in this direction appears to be very promising.

An external view of the station together with a view of the dynamo room, are presented herewith.

#### IN RECOGNITION OF DEPARTED WORTH.

HAMILTON, Oct. 7th, 1892.

Editor ELECTRICAL NEWS.

SIR,—Hamilton Association No. 2, C. A. S. E., at its regular meeting held October 7th, adopted the following resolutions:—

"Whereas it has pleased the Almighty in his great wisdom to remove from us our late Brother, Douglas S. McKenzie, and

"Whereas this Association wish to recognize his many sterling qualities, therefore it is

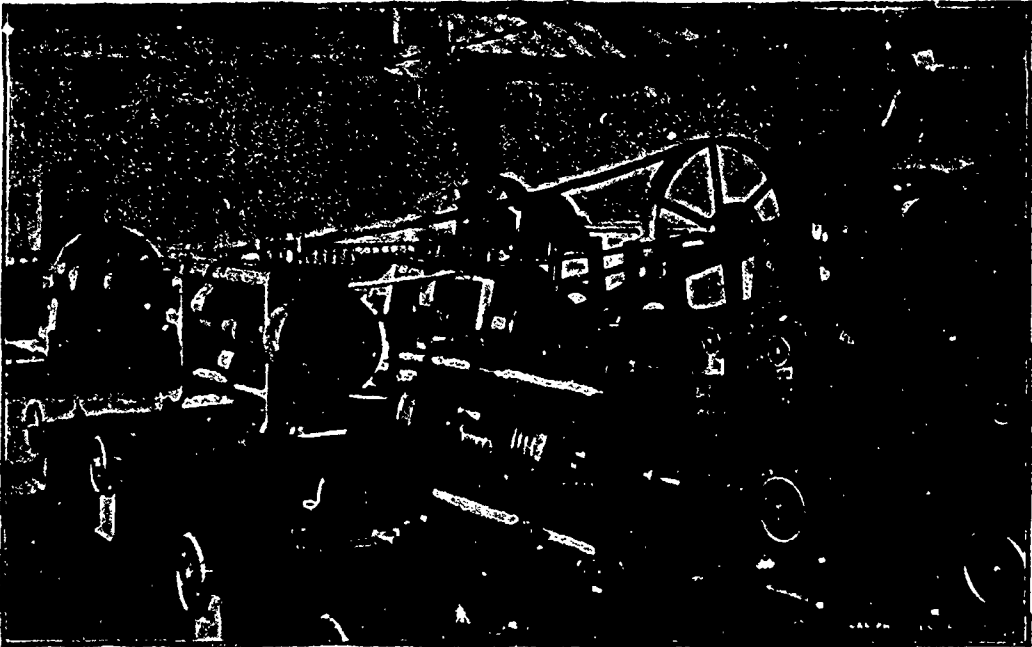
"Resolved—That a fitting tribute be paid to the memory of the departed, setting forth that in lamenting his removal from amongst us, we mourn for one who was worthy of our most sincere esteem;

"Resolved—That we offer our heartfelt condolence to the bereaved ones in this their time of deep affliction, and most earnestly beseech them to seek consolation in their bereavement from our Heavenly Father, who in His great wisdom has seen fit to remove from them a beloved father and husband, always remembering that He doeth all things well;

"Resolved—That Hamilton Association No. 2, C. A. S. E.,

extend their heartfelt sympathy to the family of the deceased;

"Resolved—That the Charter be draped for the period of 30 days as a tribute to the memory of the departed Brother, and that these resolutions be placed on the records of this Association, and a copy be sent to the family of the deceased



VIEW OF DYNAMO ROOM, GUELPH ELECTRIC LIGHT COMPANY.

Brother, also to the mechanical press for publication.

WM. MORRIS,  
E. C. JOHNSON,  
R. MACKIE, } Committee.

#### CANADIAN ELECTRICAL ASSOCIATION.

The executive, realizing the advantage of taking time by the forelock, have set about making arrangements for the January meeting.

The Secretary is in correspondence with certain members of the Association in the various departments of the electrical field, regarding the preparation of papers for the approaching meeting, and the consent of some has already been given. It is hoped that no one who has been asked to assist in this way to make the meeting a success, will decline to make the attempt, except under circumstances which would make compliance impossible.

A full meeting of the executive will be held a few days hence for the consideration of this and others matters.

The new power house of the Toronto Street Railway Co. and the Toronto Electric Light Company's new station, will, it is expected have arrived at completion by the first of the new year; these with the new Bell Telephone Exchange, and the headquarters of the local electrical manufacturers, will well repay a visit of inspection.

The Executive will welcome suggestions from any member of the Association which will be likely to promote the success of the coming meeting or the general interests of the Association