

# M. Covel's Latest Improved Automatic Saw Sharpener!

Is the Most Perfect Machine that has ever been Introduced into Mills for that purpose.

## CIRCULAR SAW STEAM FEED!

### I would also call special attention to my Heavy Circular Saw Mills

and for STEAM MILLS, would recommend the Steam Feed, having put in several which are giving the best of satisfaction, as will be seen by the following testimonials.

GRAVENHURST, August 20th, 1890.

WM. HAMILTON, ESQ., Peterborough.

DEAR SIR—I have used your Steam Feed for near four months, and it has given me perfect satisfaction in every way; it is admitted by every person who has seen it work to be the best feed ever invented. Since I put it into my mill, I have not lost ten minutes time fixing anything belonging to it. I can cut 18 boards 13 ft. long in one minute. It can do much smoother and better work than the plain feed. It is easily governed and reverses the carriages instantly. I am thoroughly satisfied with it and can recommend it to any person who has a Circular Saw Mill for cutting long or short logs. I consider I have cut more lumber than will pay for the Steam Feed since I got it than I would have cut had I not put it in.

Yours respectfully,

WILLIAM TAIT,  
Lumberman, Gravenhurst.

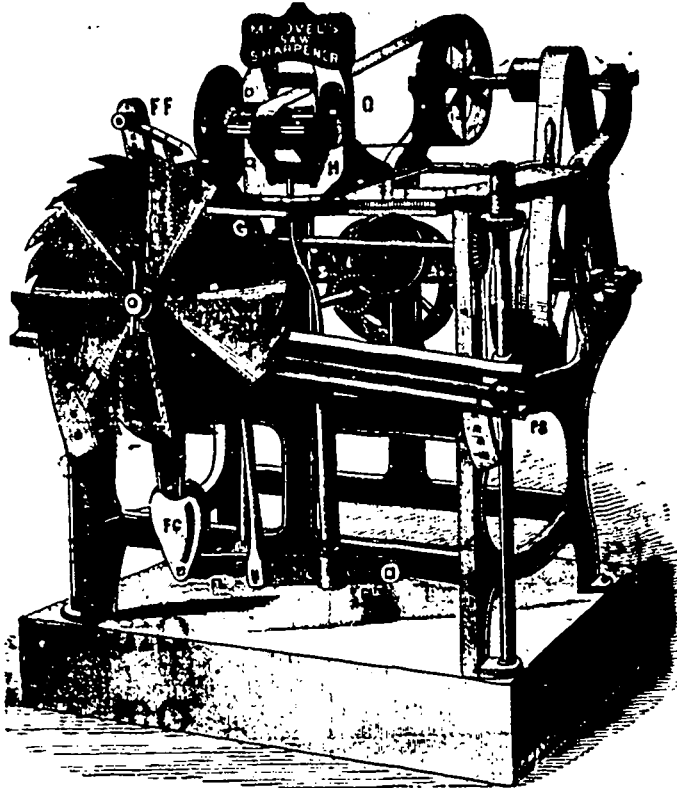
Toronto, August 11th, 1890.

WM. HAMILTON, Peterborough, Ont.

DEAR SIR—The Steam Feed you put in is working splendidly.

Yours, &c.,

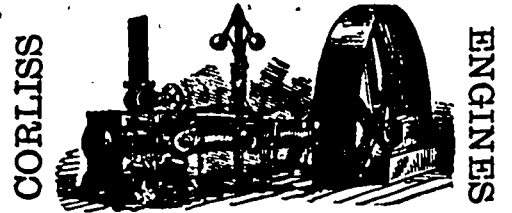
THOMPSON, SMITH & SON.



## MILL MACHINERY!

I am also manufacturing Saw Mill Machinery, for all sizes of Gang or Circular Mills, Span or Doub's Circulars for Slabbing Small Logs. My Patent Jack Chain for drawing logs into Saw Mills, acknowledged by all, to be the Cheapest and best ever got up; also, my Patent Lumber Markers, different sizes of Edgers, Gang Lath Mills, Trimmers, Power Gummers, and all Machinery used in a first class Gang or Circular Saw Mill; also, small Hand Gummers for use in the woods, for Cross-cut Saws. Rotary Pumps of different sizes, for Fire Protection in Mills, &c.

## Horizontal Engines and Boilers



Where economy of fuel is the great consideration, along with uniformity of speed, such as is required in Grist and Flouring Mills, Woollen and Cotton Factories, or large Factories of any kind, I supply the Corliss Engine. I feel justified in saying that our Style, Workmanship and Finish on this Engine will be no discredit to its renown, and certainly is not equalled in this country for economy of fuel. I have them working at 2 1/2 pounds of coal per horse-power per hour.

# WILLIAM HAMILTON - - PETERBOROUGH, ONT.

## F. E. DIXON & CO.

MANUFACTURERS OF PURE BARK TANNED

## LEATHER BELTING



First Prize, Provincial Exhibition ..... Ottawa, 1875  
First Prize, Provincial Exhibition ..... Hamilton, 1876  
First Prize, Provincial Exhibition ..... London, 1877  
First Prize, Industrial Exhibition ..... Toronto, 1879  
First Prize, Industrial Exhibition ..... Toronto, 1889  
International Medal, Centennial Ex. .... Philadelphia, 1876



None genuine unless with a STAR on the head of rivets. Send for Price Lists and Discounts.

81 Colborne Street, Toronto

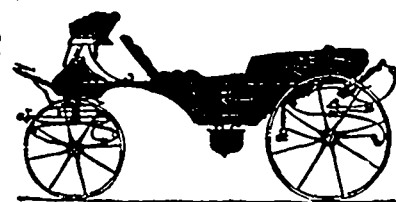
## Carriage & Waggon Works

No. 17, ALICE STREET, TORONTO.

## J. P. SULLIVAN,

(Successor to the late JOHN WEBSTER)

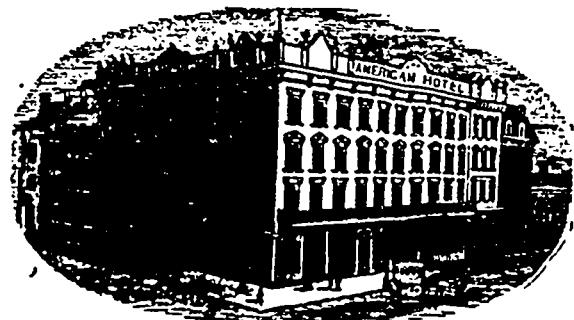
MANUFACTURER  
OF FIRST-CLASS  
CARRIAGES



WAGGONS  
AND  
SLEIGHS.

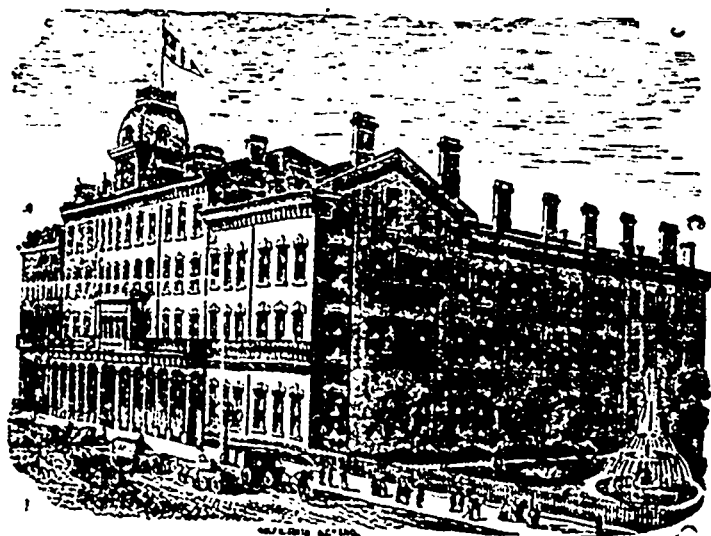
In the latest style. Superior material used in all branches. All work warranted for one year.  
All Orders Promptly attended to. Special Attention paid to Repairing.  
PRICES TO SUIT THE TIMES.

## American Hotel, Corner Young & Front Sts., TORONTO, ONT.



Newly and elegantly furnished throughout. Contains one hundred rooms, and under it the new management is first-class in all its appointments, at moderate rates.  
Free omnibuses to and from all trains.

O. T. ATWOOD, of New York, and W. R. BINGHAM, of Bradford, Ont., Proprietors.



## The QUEEN'S HOTEL, TORONTO, CANADA

McGAW & WINNETT, Proprietors.

Patronized by Royalty and the best families. Prices graduated according to rooms.