

be utilized to advantage, as one man must surely have more than he can properly attend to in the work of such a large place.

#### THE CONSTRUCTION OF THE MAIN HOUSE

is as follows: Back, brick, other parts roughcast, with air space between walls. The floors are double with paper between. Building paper is freely used in all walls.

Amongst other details we might add the following: Grain bins are over head, from which shutles lead to the main floor; all labor done, as far as possible, by power supplied by wind-mill, such as chopping grain, cutting of straw for scratching pens, cutting green bone, etc.; frost-proof root house in basement for storing of beets, potatoes, mangolds, etc.; cooker for cooking soft food—Mr. Webber uses a barrel of skim milk every other day—in fact no modern labor-saver is missing.

A furnace, "Little Wonder," combined hot air and water, is used in winter to keep the temperature at as near forty to forty-five degs. as possible.

#### THE STOCK

on the premises, consisting of



DENTONIA MODEL ISOLATION DOUBLE PEN.

white, buff and brown Leghorns, white Langshans, black and white Javas, Andalusians, bronze and white Turkeys, Pekin Ducks, Embden Geese, etc., were all in the pink of condition, as they could not otherwise be in such quarters, and out of the entire flock we saw but one bird—suffering from a nervous disease—that looked in the least to be ailing. The quality of the birds is high, many winners being amongst them and their produce should prove of merit.

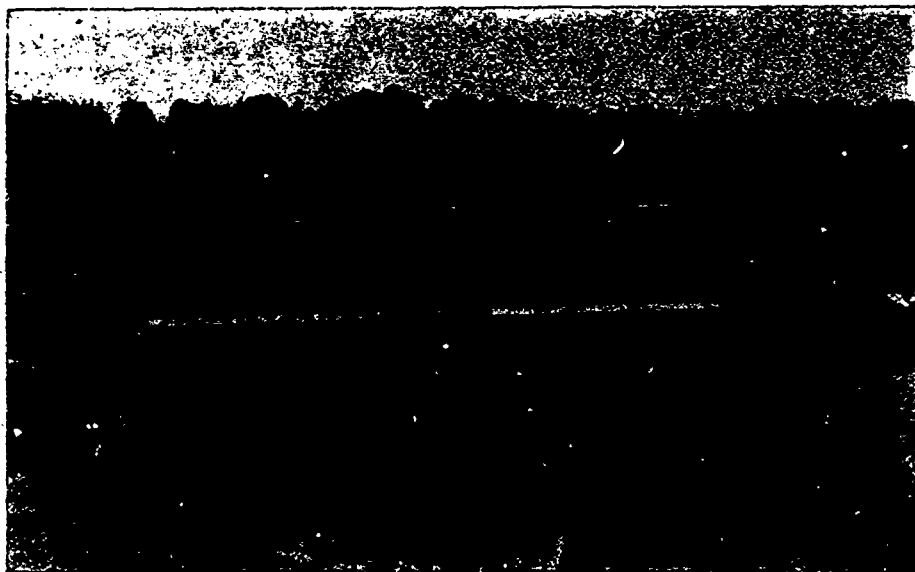
Mr. Webber finds the buff Leghorns and white Javas to be the best layers of large eggs, averag-

ing six or seven to the pound. The white and brown Leghorns he finds hard to confine.

In cross-breeding for eggs, Mr. Webber is trying white Leghorn—white Langshan cross and brown Leghorn—white Langshan cross. By this means he hopes to increase the product both in size and numbers.

#### FINALLY,

Dentonia Park Farm is pleasantly situated, is within easy access of Toronto, and we have the assurance that visitors will be made entirely welcome on any day but Sunday.



VIEW LOOKING SOUTH FROM ROOF OF MAIN BUILDING, SHOWING BROODER HOUSE AND LARGE FISH POND IN DISTANCE BEYOND.