

- Quebec.—Montreal, 4 inches; Quebec, 2; Father Point, 12.
New Brunswick.—Chatham, 2 inches.

The table shows for fifteen stations included in the report of the Meteorological Office, Toronto, the total precipitation of these stations for November.

Ten inches of snow is calculated as being the equivalent of one inch of rain:—

Station.	Depth in inches.	Departure from the average of twenty years.
Calgary, Alta.	0.30	— 0.42
Edmonton, Alta.	0.70	— 0.14
Swift Current, Sask.	0.30	— 0.35
Winnipeg, Man.	1.20	+ 0.12
Port Stanley, Ont.	4.40	+ 1.39
Toronto, Ont.	2.55	+ 0.02
Parry Sound, Ont.	2.70	— 1.30
Ottawa, Ont.	1.90	— 0.45
Kingston, Ont.	2.60	+ 0.01
Montreal, Que.	2.40	— 1.04
Quebec, Que.	1.40	— 1.67
Chatham, N.B.	4.00	+ 0.18
Halifax, N.S.	5.20	+ 0.68
Victoria, B.C.	7.70	+ 1.63
Kamloops, B.C.	0.70	— 0.42

ENGINEERS' CLUB.

Definite plans were formulated at the last meeting of the Engineers' Club of Toronto, regarding the proposed change, which for some time has been under the consideration of the members of the Club. This is the formation of a new club and the taking-on of larger and more suitable quarters for this new club. At this meeting a set of by-laws, as enacted Nov. 15, 1910, by the provisional directors: Messrs. C. M. Canniff, Willis Chapman, John Galbraith, J. G. Sing, J. B. Tyrrell, A. J. Van Nostrand, was sanctioned by the Club. Mr. Canniff gave an explanation of certain difficulties which had arisen in the past and advised the passing of the by-laws, as they had been carefully prepared and it was to the interest of the Club to get thoroughly started. Dr. Galbraith also urged the united support of the members of the old club, as it was of vital importance at this time. Upon the motion of Dr. Galbraith the by-laws were passed.

The Club and its aim is best defined by a section of the by-laws which states as follows:

The Club shall be known as the Engineers' Club of Toronto, and shall be composed of Engineers, Architects, Surveyors, Industrial Chemists, and others who may be connected with or interested in Engineering or allied professions.

The objects of the Club shall be the provision of ways and means to improve the members professionally and promote social intercourse between those having to do with applied arts and science.

The head office of the Club shall be in the city of Toronto, in the Province of Ontario, at the place therein where the business of the Club may from time to time be carried on.

The seal of the Club shall be the seal heretofore used by the Engineers' Club of Toronto, a corporation incorporated under the Benevolent Societies Act.

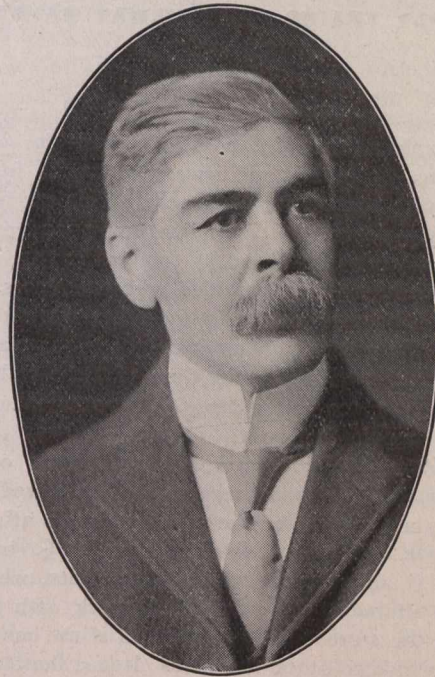
Membership.

(a) The members of the Club shall consist of the charter members, the members of the Engineers' Club of Toronto (a corporation incorporated under the Benevolent Societies Act), to whom none of the provisions as to election of members shall apply, and such others as may be elected under the provisions of the by-laws of the Club.

(b) The membership shall be limited to 800, as follows: 500 Resident, 200 Non-resident, 25 Life, and 75 Associate members.

(c) A Resident member is one who resides or whose chief place of business is in the city of Toronto, or within 25 miles thereof. He shall pay an entrance fee of \$50 and an annual fee of \$30.

(d) A Non-resident member is one who does not reside within 25 miles of the Club House for a longer period than three months in the year, and whose principal place of business is outside of the city of Toronto. He shall pay an entrance fee of \$25 and an annual fee of \$20.



C. M. CANNIFF.
President Engineers' Club, Toronto, Ont.

(e) A Life member is one whom the Directors may elect as such by unanimous vote of the whole Board on payment of a fee of \$500.

(f) An Associate member, who must be a charter member, is one who, on payment of an annual fee of \$5, shall be entitled to the use of the Library and Reading-room and Lecture Hall, but shall not share in the social privileges of the Club.

(g) Notwithstanding anything in these by-laws contained, the directors, in their discretion, may admit to membership in the Club all, or any, subscribers to the new Social Club for Engineers, etc., in course of organization in the early part of the year 1910, on payment of an entrance fee of \$25 and the annual dues as provided for Resident members.

The annual dues for all classes of members are payable in advance on the first day of January in each year, and if paid on or before the first day of February in the same year the sum of \$25 from a Resident member and \$15 from a Non-resident member shall be accepted in full thereof.