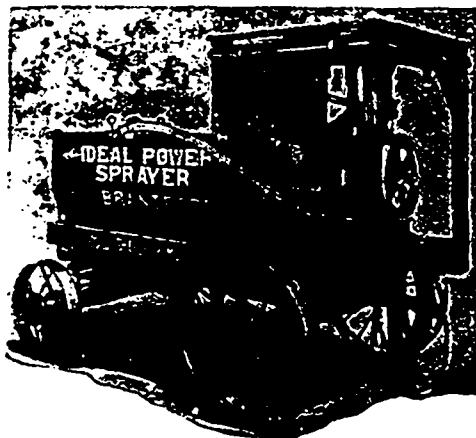


## THE BRANTFORD IDEAL POWER SPRAYER

CANNOT BE EXCELLED



We also manufacture complete lines of Gas and Gasoline Engines, Windmills, Tanks, Grain Grinders, Steel Saw Frames, Water Boxes, Pumps, etc.

Catalogues describing our different lines, sent on request

**GOOLD, SHAPLEY & MUIR CO. Ltd., Brantford, Ont.**

## "FRIEND" Sprayers



Western King

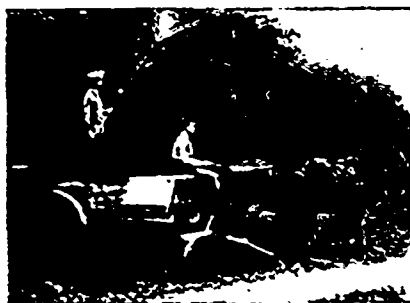
If you have a power sprayer, EXCHANGE engine and pump for our POWERFUL UNIT MOTOR, PUMP and PROPELLER AGITATOR, or sell it and buy a whole new outfit. "FRIEND" outfits are now made in many styles. TO SUIT YOUR TASTE, in-

**Mr. Fruit Grower**  
You have heard of the cele-  
brated

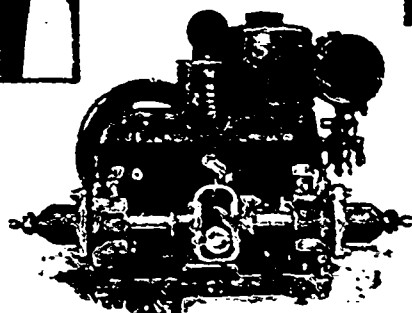
**"Friend"**  
**Power Sprayer**

But you have not heard of  
the 1914 MODELS.

**Western King  
and Queen**



Western Queen



The "Friend" Motor-Pump

cluding motor-pumps, & lifts on bed without trucks, and complete machines—built in large and small sizes. The SIMPLEST, MOST COM-  
PACT, MOST POWERFUL and FIN-  
EST WORKING power sprayers ever  
produced. Many Westerns sold in  
Canada last year to growers who are  
STOIC FRIENDS this year.

WRITE FOR CATALOG TO-DAY.  
STATING REQUIREMENTS.

**"FRIEND" MFG. CO., GASPORT, NEW YORK**

## Fruit Growers' Requests

During December Messrs. D. Johnson and G. E. McIntosh, representing the Ontario Fruit Growers' Association and a large delegation of the fruit growers of Lambton County, met J. E. Armstrong, M. P. for East Lambton, at Forest, and laid before him certain complaints regarding railway facilities and service in handling fruit shipments. The resolutions, as approved by the Ontario Association and submitted to Mr. Armstrong, were as follows:

That an effort be made to have all navigation companies handling freight and operating upon Canadian waters placed under the jurisdiction of the railway commission.

That power be given the railway commission to adjudicate claims against steamboats, railway and express companies, which have not been settled in sixty days.

That an amendment be made to the criminal code whereby handlers of perishable shipments will be liable to a fine for rough handling and for pilfering.

That fruit inspectors be also made cargo inspectors.

That where a privilege has been given by a railway company under section 317 of the Railway Act, the railway commission be given power to order the extension of such privilege.

### REQUESTS REASONABLE

Mr. Armstrong said he believed the requests reasonable, and he would see they were placed before Parliament, with a view to bring about legislation that would adjust at least some of them.

Mr. Armstrong touched upon a matter that met with approval, that of nationalizing the express companies of Canada. The express companies are demanding six million dollars for handling the parcel post business to be inaugurated very soon, and Mr. Armstrong thought that the Postmaster-General should direct attention to governmental control of the express companies.

## Nova Scotia

The annual meeting of the Nova Scotia Fruit Growers' Association will take place at Kentville, January 20th, 21st and 22nd. A three days programme is being prepared. The question of the control of black spot will be especially dealt with.

## British Columbia

Developments in the system of fruit production and distribution in British Columbia, which may involve changes in methods now used by the orchardists, are possible as a result of a recent tour of the Pacific coast undertaken by J. Kidston of Vernon, a member of the Provincial Agricultural Commission, and R. M. Winslow, provincial horticulturist and secretary of the B. C. Fruit Growers' Association. They have recently returned from a trip which took them through American fruit growing districts extending from the boundary line south into the heart of the California citrus belt. They interviewed the officers of many growing and selling organizations and secured a large amount of valuable information covering the growing and distribution of deciduous and citrus fruits.

In the orchard districts of the Northwest the idea of close cultivation between trees is not looked upon with general favor, although this method is accepted here in