

Special Reductions in Bed Room and Dining Room Furniture, Chesterfield Suites, Beds, Springs and Mattresses, Congoleum Rugs, Phonographs, etc. during the next 30 days.

J. F. SCHUETT

Furniture Dealer

Mildmay

SMALL ACCOUNTS WILLINGLY HANDLED



It is the aim of the Bank of Montreal to serve willingly in little things as well as large—to be generally helpful to its customers regardless of the size and extent of their dealings with the Bank.

For years the Bank of Montreal has co-operated with its customers, assisting in various ways in matters of finance and business.



If you require information or any other banking service, you have merely to write or call.

C. V. MILLS, Manager.
Mildmay Branch:

BANK OF MONTREAL
Established 1817

MINIATURE HOUSE PRESERVES EXAMPLE 1924 HOME

The Queen's love of things in miniature, well known to her intimates, has led to the production of one of the most unique and fascinating products of present day art and industry. It is the Queen's Dolls' House which is now complete, and which is to be placed on view at the British Empire Exhibition, near London, in April. The Dolls' House is a perfect model of the best in domestic architecture, and in the art in this decade. After the exhibition it is to be preserved in some national museum to preserve for future generations a means of viewing the accomplishments of post-war British Empire. It is an unusual idea, and if it had occurred to our forefathers in generations past we could now have on record the sort of homes they lived in and the surrounding of their daily life.

The suggestions of such a miniature home came from the aged Princess Louise, Duchess of Argyll, a daughter of Queen Victoria, who founded the Royal Canadian Academy of Art during the regime of her husband, who was at that time the Marquis of Lorne, as the Governor General of Canada. Sir Edwin Lutyens, who designated the famous country house in London, has directed the work and designated the house itself which is just five feet high and eight feet six inches long. The walls can be raised, so that each of the fully proportioned rooms is made up of the library are two hundred books, each one inch high, have been contributed by famous writers and have in some cases written the manuscripts with their own hands. Another, 600 artists have contributed to the making of the library. The room is equipped with electric light pictures in scale with the rest of the house, adorn the walls. On the table are minute despatch cases from the pens, half an inch long; the

bed rooms are tooth brushes, three-quarters of an inch long, and tubes of paste in proportion. In the kitchen is a vacuum cleaner, racks of dishes; in the trunk room are trunks, suit cases and golf bags, all made to a tiny scale. The walls are exquisitely painted, the windows hung with the finest silks, the nursery has toys including lead soldiers, about as large as a mosquito. The jewel room holds copies of some of the crown jewels, in real gems; the fruit cellar has stocks of preserves, and the wine cellar has bottles of real wine. The garages hold models of all the best known cars and these are also perfect in every detail.

INCOME TAX FORMS NOW AVAILABLE

All varieties of Income Tax Forms have arrived at the post office, Mildmay, and are being distributed from there. With the approach of April 1, the painful duty of making out the forms must again be performed by individuals and concerns. The various forms are: T1, for use of individuals other than farmers and ranchers; T1a, for farmers and ranchers only; T2 for use of corporations and joint stock companies; T3 returns of income required from trustees, executors, administrators, assignees, receivers, or persons acting in a judicial capacity; T4, for employers, and T5 for returns of individuals paid by corporations during 1923 calendar year. The post office simply hands out the forms. Information on how to fill them out must be sought elsewhere.

He—I had a very strenuous argument the other day, regarding you, and I spoke in your favor, too. She—Oh, did you? What was it about, dear? He—Well, A— said you weren't fit to eat with the pigs and I said you were.

MRS. JAMES TOLTON

A highly-esteemed old resident of the town passed on to her reward shortly after the midnight hour Monday in the person of Bessie Parkinson, beloved wife of Mr. James Tolton J.P. For some time Mrs. Tolton had been in frail health, suffering from heart trouble. Since Saturday last her condition had been worse but right up to Monday evening she took her meals at the table and was not all appearances her bright cheery self.

Mrs. Tolton had passed her eightieth year. She was born in the township of Eramosa, 4 1/2 miles from Guelph, her parents being the late Joseph Parkinson and Hanna Duffield, natives of Lancashire, England. Her father had come to this country as a small child about a hundred years ago, his parents being among the early settlers of the Guelph district. The Tolton family lived just across the road and she and her husband-to-be were playmates from earliest childhood and later school chums. In those early days the Queen's Bush was an indefinite term referring to an unselected tract of country of which Bruce County now constitutes a part. In 1862 Mr. Tolton then quite a young man, came up from Guelph and acquired a choice piece of farm land on what is now the South Line West. It was a portion of the County Town plot of a thousand acres which had been set aside by the Government to be the site of the future County town but was later judged to be unsuitable and sold. Mr. Tolton acquired 375 acres at ten dollars an acre from one of the original purchasers. That land proved to be equal to the best in Bruce Township and is today part of the present fine holdings of Mr. Tolton's sons. In 1864 Mr. Tolton erected a log house on his clearing to which to bring his bride. That pioneer shack is still standing, being used by Mr. James L. Tolton, as a store house. On December 27th, 1866, Mr. and Mrs. Tolton became man and wife and the following month they faced together the pioneer life in the woods of Bruce. For forty years they resided on the farm, they prospered, and raised a large family, the members of which today fill a large place in the life of the community.—Telescope.

W. E. N. Sinclair, leader of the Liberal opposition in the Ontario Legislature, said in speaking of the \$1500 salary to which the leader of the opposition is entitled, that he had never sought it, nor was he entitled to it, as the statute as it stood today required an opposition to consist of fifteen members and the Liberal party at the present time numbered only fourteen.

A country doctor in the North of Ireland was driving down a narrow lane, on his way to visit a patient, when he noticed an old woman in the middle of the road picking up some pieces of turf which had evidently dropped from a passing car. Pulling his horse up to prevent running over her, he said, rather sharply, "Woman and donkeys are always in the way." "Sure, sir," said the woman, stepping to one side, "I'm glad you've the manners to put yourself last."

ASTHMA USE RAZ-MAN

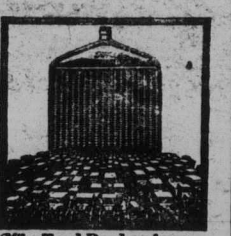
No Smoking—No Spraying—No Snuff Just Swallow a Capsule

Restores normal breathing, stops mucus rattlings in the bronchial tubes, gives long nights of quiet sleep, contains no habit-forming drug, \$1.00 at your druggists. Send 4c in stamps for a generous sample. Compliments, 142 King West, Toronto.

RAZ-MAN
GUARANTEED RELIEF
FOR SALE BY J. P. PHELAN



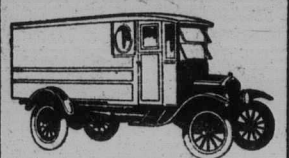
Platform express body with weather-proof cab for cartage, express, wholesalers and general delivery.



Why Ford Predominates



Anthony steel dump body, chain belt, adjustable tail gate for coal, builders supplies, contractors and municipal use, for garbage etc.



Panel body mounted on Ton Chassis for retail package delivery, meat, laundry, hardware and groceries.

Used In Every Field of Transportation

Truly amazing is the versatility of the Ford. In passenger transportation the Ford car has achieved unparalleled popularity. In freight transportation the Ford One-Ton Truck has proven pre-eminently successful—so successful that it has been adopted in almost every conceivable line of business.



All purpose express canopy body for wholesale grocers and druggists, fruit and perishable produce.

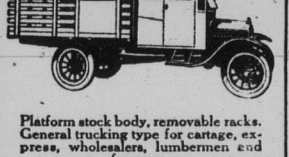


All purpose farm body for grain, market produce, hay, manure, etc.

Its adaptability has produced a variety of bodies, types of which are shown herewith.



Panel body for standard car chassis. Light delivery work for bakers, confectioners, grocers and florists.



Platform stock body, removable racks. General trucking type for cartage, express, wholesalers, lumbermen and farm use.

As a result of this remarkable adaptability, plus consistent economy, two out of every three commercial users in Canada have chosen the Ford.

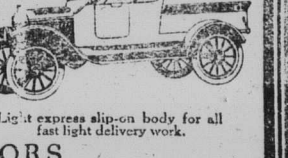


Suburban body for passenger work on farms and estates, convertible for freight and express.



Standard bus body for school or general passenger work.

See Any Authorized Ford Dealer



Light express slip-on body for all fast light delivery work.



FORD
CARS · TRUCKS · TRACTORS

A SAD CASE

The condition of Mrs. Geo. Kay, of Kincardine, after 13 months of suffering, is one that is most sorrowful. This splendid type of womanhood lies broken in health, but the hope clings with her that some day she will be restored to health. The course of the bullet, which entered her face from the rifle in the hands of Dan McDonald, left her in a paralyzed condition. She has had to have one eye removed. In this helpless condition she lives from day to day and the parents have the burden of her keep and care. Her little daughter, Mildred, is a bright and lovable child and the mother seems to continue the struggle for life because of the child. The law of the land houses her assailant, charging the town of Kincardine for the same, but it makes no provision for the care of the victim and the little daughter. Mrs. Kay may live for years. She suffers from time to time, but it is not intense in its character. However, she is absolutely helpless and her own means are depleted. The father is a laborer and man of splendid character.

Hanna as having been taken from her dwelling. Mrs. Hanna states also that she missed other articles that were not recovered. Keating was arrested on Wednesday evening and brought before Police Magistrate Hellyer on Thursday. A gold watch missing had been taken to Mr. R. J. Dale's for repairs. Statements were made by Mrs. Hanna and Chief Cringle as to the circumstances. In giving sentence the Police Magistrate said he bore in mind the fact that the accused had been before him last summer for petty theft. This was a much more serious offence, house-breaking. He sentenced him to the Ontario Reformatory at Guelph for a determinate period of one year, and for another year at the discretion of the parole officer of the Reformatory. Chief Cringle took the prisoner to Guelph on Friday.—Mt. Forest Rep.

from the barn to the stable when he tripped and fell, the lantern which he was carrying falling into the hay below, setting it on fire. In the "giii ggggg, ftkg . . . j-outdttm flfl xx fall he was somewhat stunned and was a few minutes in realizing what had happened. As soon as he could he rushed to the house for the fire extinguisher, but when he returned he was doomed, as he was unable to enter the stable owing to the flames and smoke. It is a severe blow to Mr. Hamilton as he had purchased the farm a year ago and was just getting a start. Besides his implements, hay and grain, he lost three horses, five cows, five head of young cattle and a large flock of hens. We understand there was a small insurance, but nothing like what would cover the loss.—Fordwich Record.

AN AUTO FOR WINTER

Mr. R. Sargent and Dr. Gibson of Hillsburg, drove from that village to Guelph one day last week in a unique conveyance, a combination automobile and sleigh. The trip was accomplished in less time than an hour over heavy roads, full of pits and holes. The vehicle an automobile body with two single seats, one behind the other, with wheels on the rear axle and runners on the front, was constructed by Mr. Sargent, who conducts a garage at Hillsburg, in his spare moments this winter. Embodies in its construction are the parts of four or five automobiles, and Mr. Sargent claims he can travel any place with it without fear of stalling. Deep snow or deep ruts are no hindrance to its progress. On his way from Hillsburg to Shelburne on a previous occasion he made a detour crossing two lots where there was no sign of a road and experienced no trouble whatever in negotiating the drifts, making the trip in 75 minutes. The only trouble he has with the machine is in turning corners where he is obliged to slow down to avoid skidding.

THE SNOWMOBILE

It looks as though the problem of inventing a machine which can propel a sleigh over the snow has been solved. A machine is now on the market, called the Snowmobile and is manufactured by an American company. It consists of a Ford car, the front part of which rests on two wide runners, which are rounded at the back as well as the front. The hind part of the car body rests on four low wheels, two on each side, over which runs a wide belt with flanges, a sort of caterpillar affair, similar to the belt used for propelling the war tank.

"One moment, please," exclaimed the patient in the oculist's chair. "Well?" queried the oculist, as he dropped the eyelid. "I just want to have an understanding," said the patient. "I want is thoroughly agreed, before you remove that foreign substance from my eyes, that if it turns out to be coal dust it belongs to me."

PATHETIC SIDE OF ACTON LIQUOR CASE

An interesting liquor case which has a pathetic side to it is to-day requiring the attention of the authorities. In December Chief MacPherson and provincial constable Atkins raided the house of Mrs. Churbez, living with her husband at Acton, and found her engaged in making liquor. She was charged with a breach of the Inland Revenue Act and was fined \$200 and costs. Her husband having cleared out, she was given a week to secure the funds necessary to cover the fine and costs. By the time the week was up one of two of her children were found to be suffering from chicken pox. For three or four weeks this ailment raged in the family. The fine was not forthcoming and a warrant for her commitment to the county jail at Milton was issued. This was to be executed as soon as the doctor decided it was safe to remove the children. Before they were better, however, Mrs. Churbez left Acton and took them to Toronto. The warrant was forwarded to Chief Dickson of that city. His detectives located Mrs. Churbez among her compatriots on Niagara street, but found the house was quarantined, several of the children now being affected with scarlet fever. The officers have the place under surveillance and as soon as the quarantine is raised Mrs. Churbez will be arrested, and Chief MacPherson will be advised to take her to Milton jail unless the fine and costs are sooner paid. If Mrs. Churbez has to serve her sentence in the county jail at Milton, she will be the first woman in Halton County to do so under the Inland Revenue Act.

COURIER'S DUTIES AS TO ROADS

Here are some instructions for Couriers, taken from the pamphlet Rural Mail Delivery in Canada and Approved by the Post Office Department. (3a) Roads on which rural mail delivery is about to be established must be in good condition. It is to be understood that for the effective performances of the service they must be kept passable for vehicles at all seasons of the year, either by the municipality or the residents who are being served. Rural box holders should understand that it is not the duty of couriers to break the roads after storms, Streams, gullies and ditches must be bridged when necessary. Failure to maintain in a passable condition at all times the highways travelled by a rural mail courier will be considered sufficient for the Department withdrawing the service pending the completion of the necessary improvements.

(3b) During the winter season the roads must be kept open and the approach to the box sufficiently clear of snow to enable the courier to cover his route without unnecessarily delayed or inconvenienced.

SENTENCED TO THE ONTARIO REFORMATORY

Suspicious regarding the perpetrator of the burglaries of Mrs. Stephenson's and Mrs. Hanna's houses on Egremont Street were verified when Robert Keating, who has been living for some time on the same street, was placed under arrest by Chief Cringle, who made a search of a stable in which Keating had been looking after a couple of horses. A man's fur coat, a fur neck-piece, a suitcase with clothing, some spoons and forks and numerous other articles were identified by Mrs.

BARN AND CONTENTS DESTROYED BY FIRE

On Tuesday morning between 6 and 7 o'clock, one of the most disastrous fires that has ever occurred in this vicinity took place when the large bank barn belonging to Mr. Robert Hamilton, second con. was completely destroyed together with all his stock, feed and implements. Mr. Hamilton was doing his chores, and was coming down the stairs