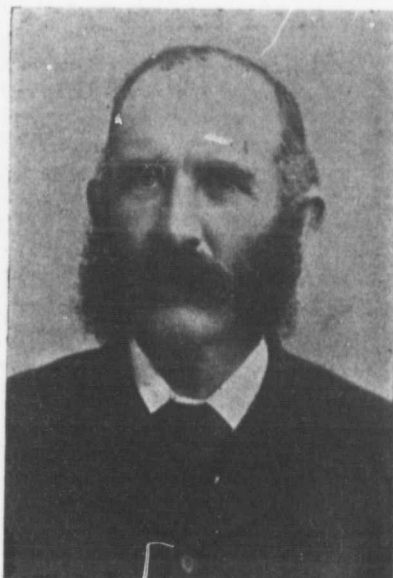


able day when the temperature is high enough and the bees are getting a little honey. Get at the clips just as early as possible and you will make a great deal more speed and get along better. Then as to the snow, I set out a great many this year early in March when we had the warm weather, and I could not see



WM McEVoy

Inspector of Apiaries for Ontario.

any difference between those and the ones I set out later.

Mr. Darling: Two or three years ago there was quite a lot said at our convention about setting out bees early and it chanced to be a pretty nice March following. I set out some, maybe ten colonies in the fore part of March and the balance of the bees on the 26th. For some time I thought those set out earlier were going to be ahead of the others but when it came time for the honey season every one of them was weaker than those put

out later on, but I think with the majority of those who have spoken it is not proper to keep the bees in the cellar too long. One thing I have noticed, if the bees come out of the hive with a rush they get over each other and tumble in the snow and water that may be near. If you can get your bees out slowly and naturally as they would fly there are very few bees die on the snow that would be of any benefit if they got back to the hive. There was a good deal of emphasis put on the fact that we ought to have a certain kind of a day and a certain kind of weather and the wind in a certain direction to set our bees out. I got fooled on that two or three times and once or twice I thought I was so sure of knowing what was going to be the next day I put the bees out the night before but it turned out unfavorable and probably they stayed in two or three days before they could come out and I couldn't see the bees were one bit the worse. If they are set out in the evening so that they don't rush out and get the cold air the next morning they will come out quietly and civilly as bees ought to. I think I made a mistake in keeping the bees in too long. I don't like the wind when the bees are flying.

The President: In remarking to Mr. Hall that those in the cellar did not build up so fast as those outside he recommended taking them out earlier. The difficulty was the bees in the cellar did not get any water and until they got a drink they did not start breeding. I find it a good thing, if the weather is suitable, but the weather is not always the same each year. Some years it is advisable to take them out a couple of weeks earlier. As far as fruit bloom is concerned I like to have my super on as soon as it starts. I have probably three hundred acres of fruit around