

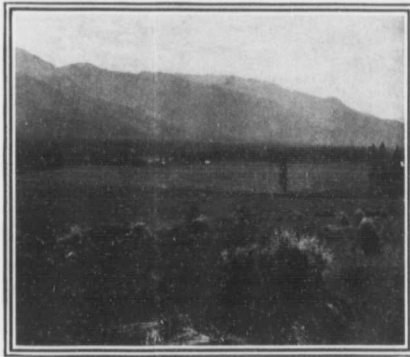
Useful Information

The population of the Municipality is over 3,500.

The tax rate is $5\frac{1}{2}$ mills on the dollar, 3 mills school tax, and 1 mill special loan tax, making a total of $9\frac{1}{2}$ mills based on 60 per cent. of actual value of property.

The Municipality has over 129 miles of public roads, the drives in this district being the prettiest in the Okanagan.

The Armstrong High School has the largest enrollment of any High School of any Municipality in the Province.



Armstrong has a new High School building, as well as a large Public School, and the Municipality has 7 other additional schools. The country schools are so located that no farm residence is over two miles from school.

The High School attendance at Armstrong ranks eighth in the Province, and first in the Okanagan Valley.

The valuation of the town and country school buildings is over \$34,000.00, practically \$10.00 per capita.

The average annual death rate in the Municipality for the past 10 years is 3.5 per thousand.

No case of tuberculosis has originated in the Municipality.

In 10 years the Municipality has had 17 cases of Typhoid Fever—none were fatal; but in four years, or since the completion of the town water system, there has been no case of typhoid fever in Armstrong.