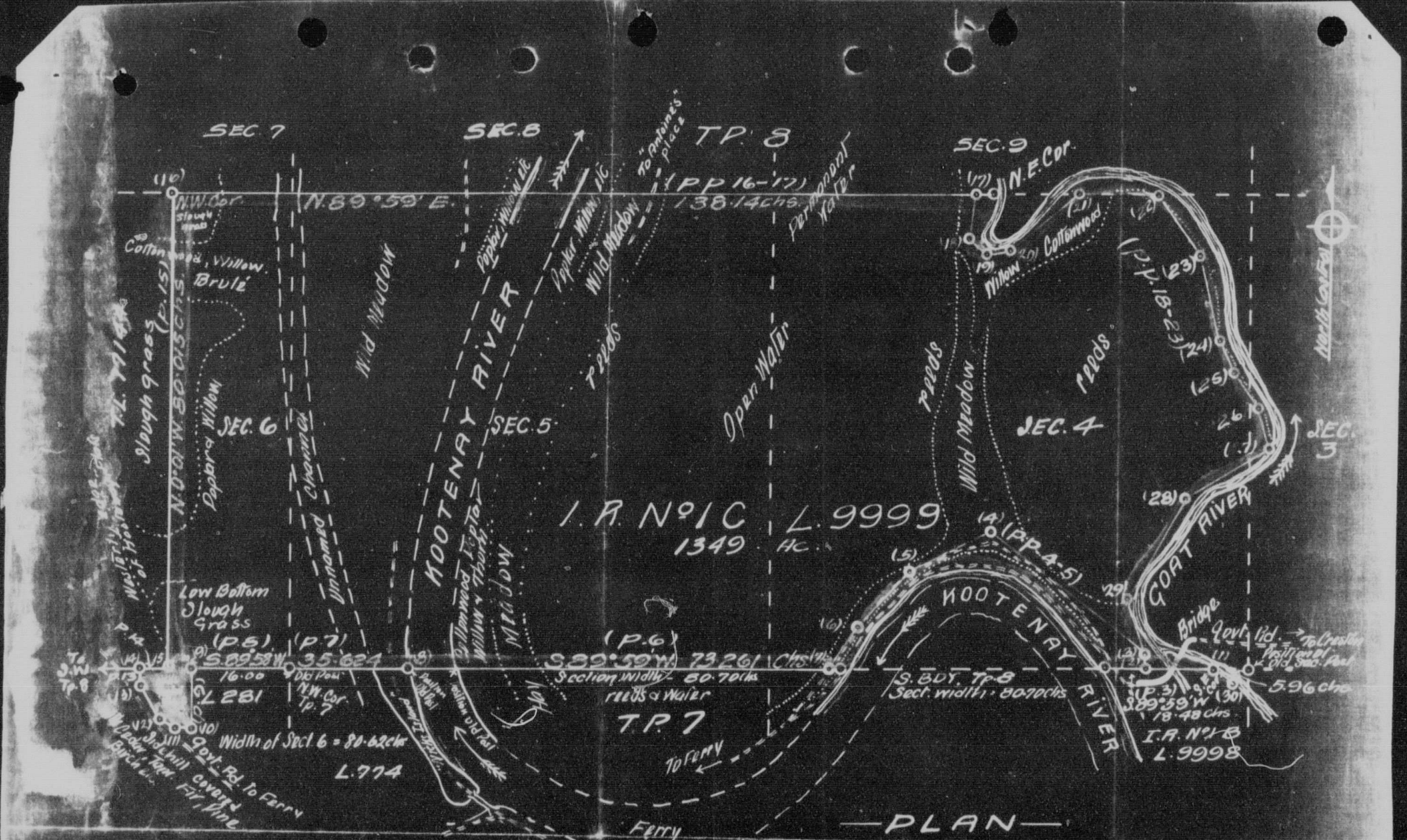


00187



STR.	COURSE	DIST.	STR.	COURSE	DIST.
1-2	59° 59' W	11.026	17-18	59° 23' W	2.779
2-3	92° 02' W	1.180	18-19	59° 20' W	3.963
3-4	92° 02' W	1.180	19-20	59° 20' W	3.963
4-5	92° 02' W	1.180	20-21	59° 20' W	3.963
5-6	92° 02' W	1.180	21-22	59° 20' W	3.963
6-7	92° 02' W	1.180	22-23	59° 20' W	3.963
7-8	92° 02' W	1.180	23-24	59° 20' W	3.963
8-9	92° 02' W	1.180	24-25	59° 20' W	3.963
9-10	92° 02' W	1.180	25-26	59° 20' W	3.963
10-11	92° 02' W	1.180	26-27	59° 20' W	3.963
11-12	92° 02' W	1.180	27-28	59° 20' W	3.963
12-13	92° 02' W	1.180	28-29	59° 20' W	3.963
13-14	92° 02' W	1.180	29-30	59° 20' W	3.963
14-15	92° 02' W	1.180	30-31	59° 20' W	3.963
15-16	92° 02' W	1.180	31-32	59° 20' W	3.963
16-17	92° 02' W	1.180	32-33	59° 20' W	3.963
17-18	92° 02' W	1.180	33-34	59° 20' W	3.963
18-19	92° 02' W	1.180	34-35	59° 20' W	3.963
19-20	92° 02' W	1.180	35-36	59° 20' W	3.963
20-21	92° 02' W	1.180	36-37	59° 20' W	3.963
21-22	92° 02' W	1.180	37-38	59° 20' W	3.963
22-23	92° 02' W	1.180	38-39	59° 20' W	3.963
23-24	92° 02' W	1.180	39-40	59° 20' W	3.963
24-25	92° 02' W	1.180	40-41	59° 20' W	3.963
25-26	92° 02' W	1.180	41-42	59° 20' W	3.963
26-27	92° 02' W	1.180	42-43	59° 20' W	3.963
27-28	92° 02' W	1.180	43-44	59° 20' W	3.963
28-29	92° 02' W	1.180	44-45	59° 20' W	3.963
29-30	92° 02' W	1.180	45-46	59° 20' W	3.963
30-31	92° 02' W	1.180	46-47	59° 20' W	3.963
31-32	92° 02' W	1.180	47-48	59° 20' W	3.963
32-33	92° 02' W	1.180	48-49	59° 20' W	3.963
33-34	92° 02' W	1.180	49-50	59° 20' W	3.963
34-35	92° 02' W	1.180	50-51	59° 20' W	3.963
35-36	92° 02' W	1.180	51-52	59° 20' W	3.963
36-37	92° 02' W	1.180	52-53	59° 20' W	3.963
37-38	92° 02' W	1.180	53-54	59° 20' W	3.963
38-39	92° 02' W	1.180	54-55	59° 20' W	3.963
39-40	92° 02' W	1.180	55-56	59° 20' W	3.963
40-41	92° 02' W	1.180	56-57	59° 20' W	3.963
41-42	92° 02' W	1.180	57-58	59° 20' W	3.963
42-43	92° 02' W	1.180	58-59	59° 20' W	3.963
43-44	92° 02' W	1.180	59-60	59° 20' W	3.963
44-45	92° 02' W	1.180	60-61	59° 20' W	3.963
45-46	92° 02' W	1.180	61-62	59° 20' W	3.963
46-47	92° 02' W	1.180	62-63	59° 20' W	3.963
47-48	92° 02' W	1.180	63-64	59° 20' W	3.963
48-49	92° 02' W	1.180	64-65	59° 20' W	3.963
49-50	92° 02' W	1.180	65-66	59° 20' W	3.963
50-51	92° 02' W	1.180	66-67	59° 20' W	3.963
51-52	92° 02' W	1.180	67-68	59° 20' W	3.963
52-53	92° 02' W	1.180	68-69	59° 20' W	3.963
53-54	92° 02' W	1.180	69-70	59° 20' W	3.963
54-55	92° 02' W	1.180	70-71	59° 20' W	3.963
55-56	92° 02' W	1.180	71-72	59° 20' W	3.963
56-57	92° 02' W	1.180	72-73	59° 20' W	3.963
57-58	92° 02' W	1.180	73-74	59° 20' W	3.963
58-59	92° 02' W	1.180	74-75	59° 20' W	3.963
59-60	92° 02' W	1.180	75-76	59° 20' W	3.963
60-61	92° 02' W	1.180	76-77	59° 20' W	3.963
61-62	92° 02' W	1.180	77-78	59° 20' W	3.963
62-63	92° 02' W	1.180	78-79	59° 20' W	3.963
63-64	92° 02' W	1.180	79-80	59° 20' W	3.963
64-65	92° 02' W	1.180	80-81	59° 20' W	3.963
65-66	92° 02' W	1.180	81-82	59° 20' W	3.963
66-67	92° 02' W	1.180	82-83	59° 20' W	3.963
67-68	92° 02' W	1.180	83-84	59° 20' W	3.963
68-69	92° 02' W	1.180	84-85	59° 20' W	3.963
69-70	92° 02' W	1.180	85-86	59° 20' W	3.963
70-71	92° 02' W	1.180	86-87	59° 20' W	3.963
71-72	92° 02' W	1.180	87-88	59° 20' W	3.963
72-73	92° 02' W	1.180	88-89	59° 20' W	3.963
73-74	92° 02' W	1.180	89-90	59° 20' W	3.963
74-75	92° 02' W	1.180	90-91	59° 20' W	3.963
75-76	92° 02' W	1.180	91-92	59° 20' W	3.963
76-77	92° 02' W	1.180	92-93	59° 20' W	3.963
77-78	92° 02' W	1.180	93-94	59° 20' W	3.963
78-79	92° 02' W	1.180	94-95	59° 20' W	3.963
79-80	92° 02' W	1.180	95-96	59° 20' W	3.963
80-81	92° 02' W	1.180	96-97	59° 20' W	3.963
81-82	92° 02' W	1.180	97-98	59° 20' W	3.963
82-83	92° 02' W	1.180	98-99	59° 20' W	3.963
83-84	92° 02' W	1.180	99-100	59° 20' W	3.963

PLAN OF LOWER KOOTENAY INDIAN RESERVE NO. 1C L. 9999 G. I. WEST KOOTENAY B. C.

Scale - 20 chs. = 1 in. Surveyed for Ind. Dept. of Canada, 1926 J. G. Cunningham B.C.L.S.

B.C. 500

REPEAT REPETITION

RG 10, C-11-2, VOL. 11043 File/dossier 30/5

National Archives of Canada Archives nationales du Canada

INDIAN AFFAIRS AFFAIRES INDIENNES