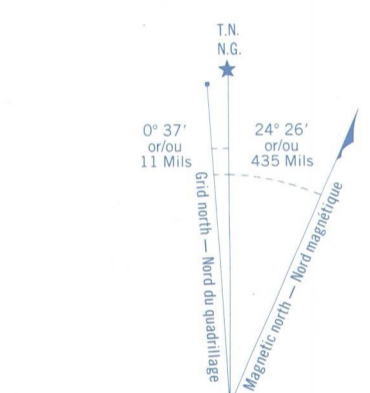
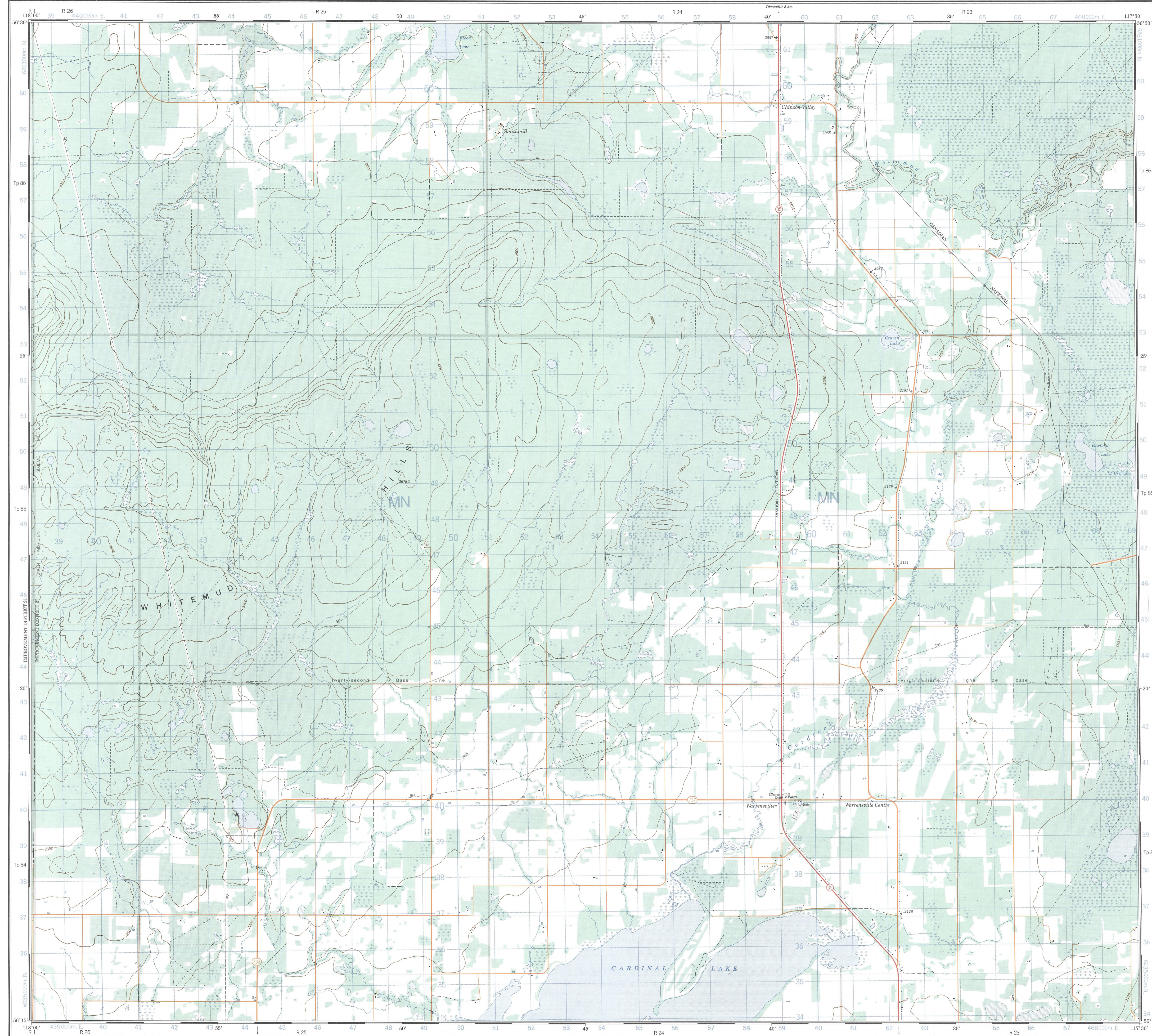
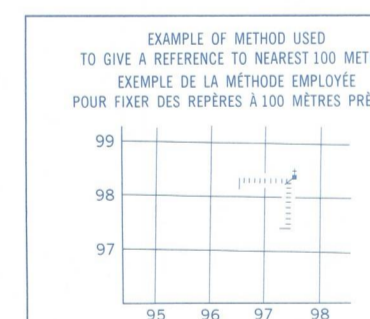
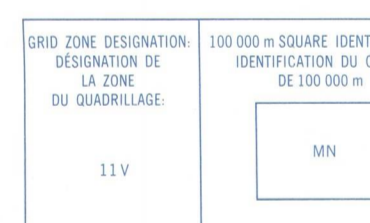


Military users, refer to this map as: Références de cette carte pour usage militaire. SERIES A 741 SERIE MAP 84 C/5 CARTE ÉDITION 3 MCE ÉDITION



Use diagram only to obtain numerical values APPROXIMATE MEAN DECLINATION 18.7° FOR CENTRE OF MAP Annual change decreasing 1991

ONE THOUSAND METRE UNIVERSAL TRANSVERSE MERCATOR GRID ZONE 11 QUADRILLAGE UNIVERSEL TRANSVERSE DE MERCATOR DE MILLE MÈTRES



REFERENCE POINT CHURCH - EGLISE (as above) POINT DE RÉFÉRENCE (as above) EASTING: Read number on grid line immediately to left of point. NORTING: Read number on grid line immediately below point.

PRODUCED BY THE CANADA CENTRE FOR MAPPING, DEPARTMENT OF ENERGY, MINES AND RESOURCES. INFORMATION CURRENT AS OF 1989. PUBLISHED 1991.

© 1991 HER MAJESTY THE QUEEN IN RIGHT OF CANADA. DEPARTMENT OF ENERGY, MINES AND RESOURCES.

Table with 4 columns: Roads, Routes, and their corresponding symbols in French and English.

CHINOOK VALLEY ALBERTA Scale 1:50 000 Échelle. Includes conversion scale for elevations (Feet/Meters) and contour interval information.

Information concerning bench marks and topographic survey monuments. Includes conversion scale for elevations and contour interval information.

ÉTABLI PAR LE CENTRE CANADIEN DE CARTOGRAPHIE. MINISTÈRE DE L'ÉNERGIE, DES MINES ET DES RESSOURCES. Includes information about the map's production and scale.

CHINOOK VALLEY 84 C/5 ÉDITION 3 ÉDITION

