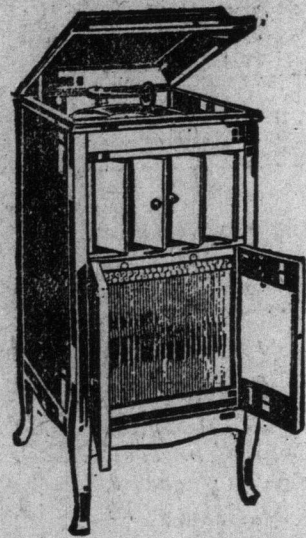


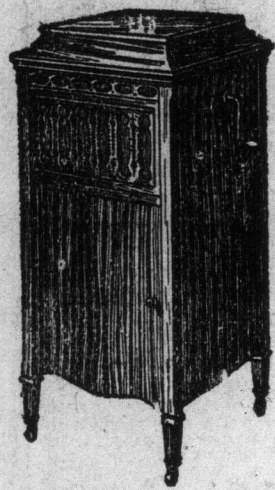


Music washes away from the soul the dust of everyday life—Auerbach.



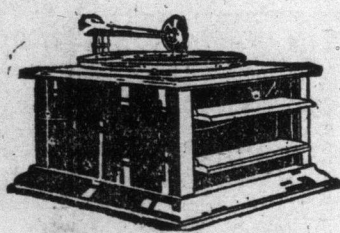
Columbia \$112

This model equipped with the exclusive Columbia Individual Record Ejector. A touch of the finger on the proper button ejects any record desired. Cabinet of mahogany satin walnut or quartered oak, in all finishes. Size 41 3/4 inches high and 19 x 21 inches. Record capacity 45 records. Price 112.00

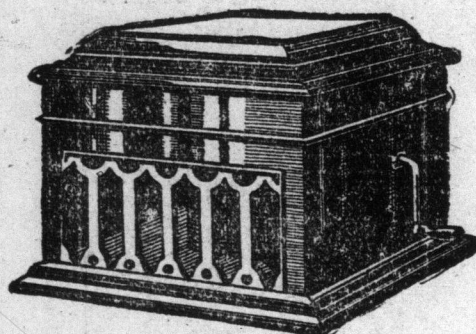


Pathephone \$125

Model 125 (mahogany or fumed oak). Equipped with tone control, Pathe sound-box, speed adjuster, full-tone Pathe sapphire, and powerful double spring silent motor. Equipped to play all makes of disc records.



Columbia \$21



Pathephone \$65

In mahogany, golden and fumed oak. Equipped with tone control, Pathe sound box, speed adjuster, full-tone Pathe sapphire, powerful double-spring silent motor. Equipped to play all makes of disc records. Price 65.00

Canada's Chief Hope is in Her Homes and No Home is Home Without Music

Our forefathers had so much stern work to do that they found little time for art, or literature, or music.

But during the last twenty-five years there has been a marvelous growth in the direction of broad and liberal education.

And no home today is complete without music of one sort or another. Amongst other things to be produced and perfected in the musical world is the Pathephone and also the Columbia Grafonola.

The marvelous fidelity of the soft vibrations of the Violin, the strong melody of the Orchestra or Band and every voice modulation of the great artists as rendered on the

Pathephone and Columbia Grafonola

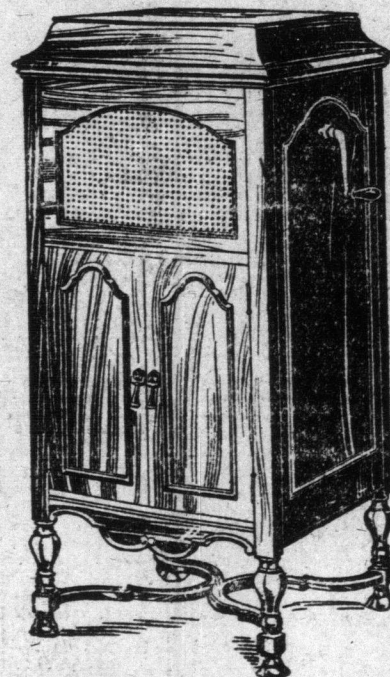
Are Heard in All the Purity, Tone and Detail of Technique in the

Simpson Music Studio

Here you can have tested and brought out the artistic merit of each instrument.

Here you will see ALL the various styles and finishes in Pathe, Columbia and other makes.

Music lovers not only in Toronto, but all over Ontario can secure any of these and other style instruments on easy payment basis by consulting the Home-Lovers' Club Secretary, Sixth Floor.

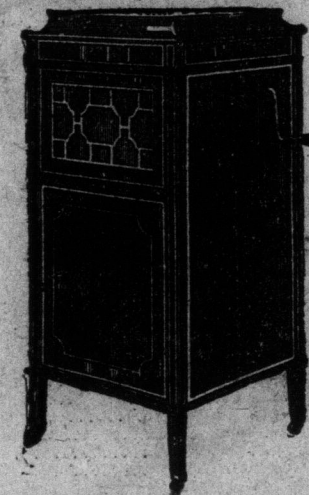


Pathe \$175

Equipped with tone control, Pathe sound-box, speed adjuster, full-tone Pathe sapphire, half-tone Pathe sapphire, jewel point for playing records using a diamond point, and a well-balanced, powerful, smooth-running spring motor. Equipped to play all makes of disc records.

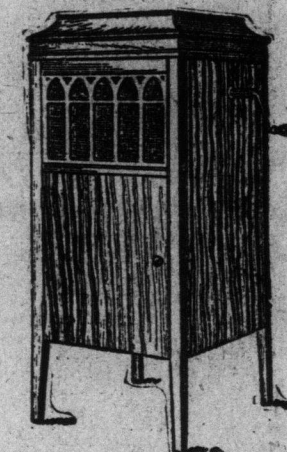
Columbia \$65

The tone-volume of this popular model is astonishing, and its tone-quality is unexceptionable. Cabinet of mahogany or quartered oak, in all finishes. Size 18 1/2 x 21 1/2 x 13 1/2 inches high. Price 65.00



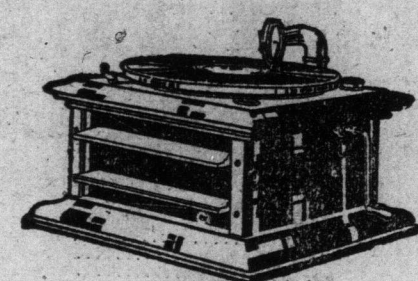
Pathe \$250

Model 250—Sheraton inlaid, dull antique mahogany. All exposed metal parts gold-plated. Equipped with tone control, Pathe sound-box, speed adjuster, sound-box for lateral cut records, full-tone Pathe sapphire, half-tone Pathe sapphire, jewel point for playing records using a diamond point, and powerful four-spring, silent, long-running motor, four record-filling albums. Dimensions: Height, 48 in.; width, 22 in.; depth, 23 in. Equipped to play all makes of disc records. Price, \$250.00, with Pathe electric motor, \$45.00 extra.



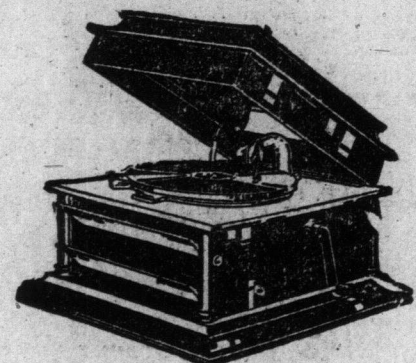
Pathe \$90

Model 90 (in mahogany or fumed oak). All exposed metal parts nickel-plated. Equipped with tone control, Pathe sound box, speed adjuster, sound box for lateral cut records, powerful double-spring silent motor, Pathe full-tone and half-tone sapphires, jewel point for records using a diamond point. Dimensions: Height, 42 in.; width, 18 in.; depth, 19 in. Equipped to play all makes of disc records. Price 90.00



Columbia \$33

A model that combines perfect mechanism and finish and a tone that is typically Columbia—clear, clear and natural. Cabinet of mahogany or quartered golden oak. Size 15 1/2 in. square at base and 8 1/2 in. high. Price 33.00



The Robert SIMPSON Company Limited

PROBS
C
M
HU
A
Enemy
B
London,
Germans
miles, begu
eastern an
Austria-Ita
abated, bu
fighting re
retreat of
chosen for
allies also
ed conditi
Lidine, a
Italian an
been captu
are possib
from the
Italian tes
passes in
The inv
Venetia fr
apex of th
miles, but
sion is at
able to J
vance of
districts
north kee
CAL
No D
Rome,
party dir
ing of 10
the press
Austria-G
fied in f
of the pe
and the
sentiment
time of
clare.
One of
Germans
been the
maintain
together
fishing
among t
General
causing
facing a
retreat
the part
of the f
past stu
CO
Wash
Wash
situation
President
today's
touching
and the
allies.
cially o
munition
guarded
sphere
While
great an
cess of
cials b
the opti
ters, th
decisive
fortan
setback
rather
upon it
is no
break
to the
Finny
Purit
treat
cial an
officers
Italian
confide
be able
check
great
Word
with th
their s
ent to
ed tod
Cadm
gama
ing A
British
pieces
if all
Americ