

SIMPSON

Store Opens 8 a.m.

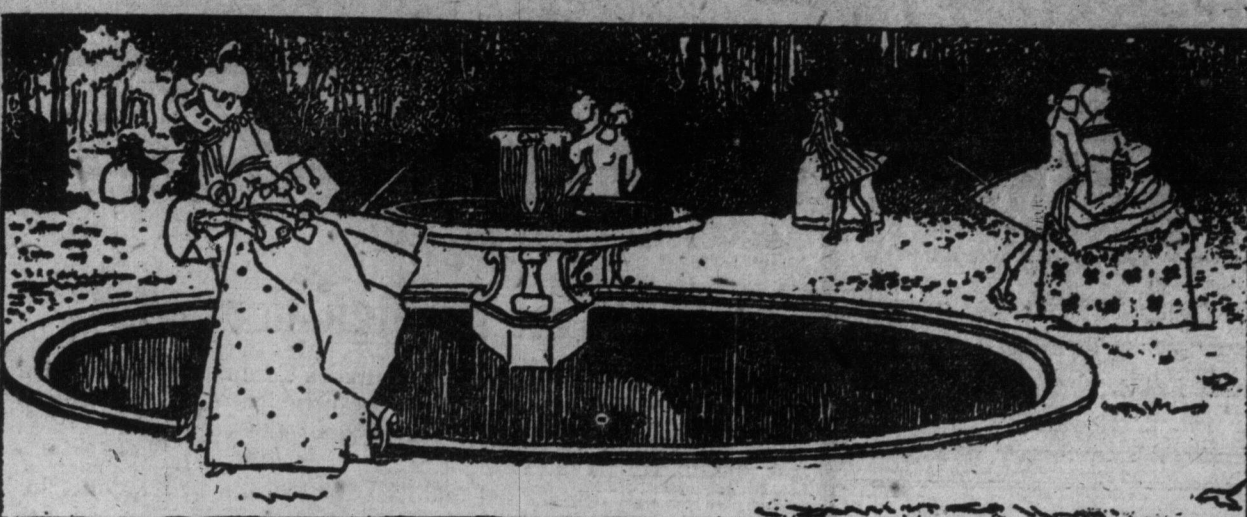
Closes at 5.30 p.m.

H. H. Fudger, President.

J. Wood, Manager.

WBS: Mild, and mostly fair.

SIMPSON



Thoughts of Spring are thoughts of clothes in anxious minds. Here are some typical values to turn those thoughts toward the splendid early displays of

The Simpson Store

Excellent Values in the Mantle Section

A SERVICEABLE SPRING COAT of good quality imported English serge, made in our own clean and up-to-date factory, in navy and black only, shows one of this season's newest styles. The collar is overlaid with striped material, and is cut with the new one-sided effect. Very exceptional value at **11.00**. Other spring models range in price from \$9.00 to \$19.75. Have you seen our display on the third floor?

SKIRT of a splendid quality worsted, in a medium grey tone, seven gored, plain panel front, inverted pleat back, side gores, cut in a fancy point design, ornamented with buttons. Price **6.50**. Other splendid skirt values, \$3.79 to \$7.50.

Expert Corset Advice on the New Spring Fashions

An exposition of the new spring corsets will be held in the Corset Department, third floor, during the next three weeks. Commencing Monday, ladies can see and have explained all about the new models for spring that our experts have selected from the world's most prominent makers. To assist our regular staff, we have engaged for the entire period Miss Hendricks, of New York, an expert corsetter, already well known to Toronto ladies, who will be pleased to renew the pleasant connection made during former engagements.

Bon-Ton Corsets, \$4.00 to \$15.00 a pair. Royal Worcester Corsets, \$1.25 to \$4.00 a pair. Redfern Corsets, \$4.00 to \$12.00 a pair. Wardrobe Corsets, \$1.25 to \$6.00 a pair. C.B. a la Spirite Corsets, \$1.25 to \$6.00 a pair. Thomson's Glove-Fitting Corsets, \$1.25 to \$4.00 a pair. R. and G. Corsets, \$1.25 to \$2.90 a pair. Royale Corsets, \$1.50 to \$3.50 a pair. C.C. a la Grace Corsets, \$1.25 to \$4.00 a pair. D. and A. and La Diva Corsets, \$1.00 to \$5.00 a pair. La Reine Corsets, \$1.25 to \$6.00 a pair. Jewel Corsets, \$1.25 to \$4.00 a pair. Modest Lace Front Corsets, \$6.50 to \$12.00 a pair.

Strong Showing of Suitsings

Never before have we had such a complete and comprehensive stock of fashionable fabrics for the popular, smart, tailored suit. You will find here exhibited every new weave in a complete range of new spring shades and color blendings, imported from the world's best markets. You can always rely upon distinction when you buy Simpson's Dress Goods. A suit made from goods chosen in this department is your suit. There is little danger of meeting another just like it. Call on Monday and see our special display, with good light to judge by, a spacious place to choose in, and suitings of every fashionable kind.

Dress Goods Dept.—2nd Floor.

New Embroideries

Cambrie Edgings, large variety of patterns, 3/4 to 4 1/2 inches wide, per yard, 5c, 7c, 8c, 10c, 12 1/2c to 30c.

Cambrie Insertions and Beadings, from 1/2 to 2 1/2 inches wide, good assortment of patterns, per yard, 5c, 7c, 8c, 10c to 35c.

SPECIAL FOR MONDAY'S SELLING.

4,000 yards of New Cambrie Embroideries, with insertions, immense assortment of patterns, all new, good cambrie, our regularly 5c and 6c quality. Monday, per yard, 3c.

One Hundred Wonderful Tunics 1-2 and 1-3 Ordinary Prices

In our Robe and Tunic department, adjoining the Waists, we offer Monday morning 100 of the most magnificent Tunics and Overdresses ever shown in Toronto. They include black with crystal, all crystal, hand embroidered, raised flowers on silk crepe and chene d'or contrasts of cerise and blue and practically every shade of the moment.

Styles are unique, introducing the "Marie Antoinette" fichu, from small folded effects to gorgeous shapes, extending to the waist. The manufacturer gives to the R. Simpson Co. the exclusive selling rights in Canada, for all his goods.

Regular Prices, if not, would be \$29.50, \$35.00, \$39.50, \$45.00, \$50.00 and \$59.00, Monday, each, **19.50**.



This in the Lunch Room

Monday Afternoon 3:00 to 5:30
Cold Ham,
Potato Salad,
Pot of Tea,
TEN CENTS.

Tan Ribbons

Every fashion indication points to an extravagant use of "tan," light and dark. In millinery tans and browns are in the greatest demand. See the display to-morrow in the Ribbon Department.

Beautiful Duchesse Satin, 5 inches wide, per yard, 20c; 6 inches wide, per yard, 25c.

During alterations please use the four new standard-plunger elevators on the Richmond st. side of the building, which give quick service to all floors.

Picked Values for the Hosiery Sale

The cold weather started the big Hosiery event off as a cashmere sale. The first days showed a decided tendency to forget that February is the last winter month. Now, however, we find the summer needs are not being neglected. Get your list before the lines are too much broken. These prices are for Monday:

- | | |
|---|--|
| Women's Imported Lisle Thread Hose. The lot consists of plain in black, tan and colors, laces and silk embroidered fronts; all are double spliced heel, toe and sole. Regularly 50c. Monday Hosiery Sale price 35c, 3 pairs 1.00 | Men's Imported All-wool "Llama" Cashmere Socks, black, English made, spliced heel, toe and sole, all sizes. Special Hosiery Sale price Monday 25 |
| Women's Imported Lisle and Cotton Hose, a large variety of kinds, black cotton, natural wool sole and maco sole, black, tan, colors and fancy patterns. Regularly 30c. Hosiery Sale price Monday, pair 19c, 3 pairs 55 | Men's Plain Black Cashmere and Merino Socks, medium weight, splendid wearing. Regularly 20c. Hosiery Sale price Monday, pair 12 1/2 |
| Women's Plain Black Cashmere Hose, seamless, spliced heel, toe and sole, fast dye, soft and splendid wearing. Special Hosiery Sale price Monday, pair 25 | Men's Lisle Thread Socks, plain, also fancy patterns, a large variety of kinds. Regularly 25c. Hosiery Sale price Monday .15 |
| Women's Fine Imported Silk and Wool Hose, fine elastic rib, black, with contrasting colors, in silk, pretty and splendid wearing. Regularly 75c. Monday, pair 49 | Men's Fine Imported Lisle Thread Socks, plain black, tan and colors, silk embroidered and fancy patterns. Regularly 40c. Hosiery Sale price Monday 25 |
| Boys' and Girls' Ribbed Black Cashmere Stockings, seamless, all-wool, spliced heel, toe and sole; sizes 5 1/2 to 10. Regularly 35c and 40c. Hosiery Sale price Monday, pair 25 | Girls' Cotton Stockings, black, tan, ribbed, medium weight, sizes 4 to 10. Regularly 20c. Hosiery Sale price Monday 12 1/2 |

Sterling Silver

Sterling Silver Salt Spoons, with gold lined bowls. Special **.19**

Sterling Silver Tea Spoons, Louis XV. pattern, medium size. Each **.47**

Large Hot Water Kettles, on stand, silver plated in the heaviest quality, Queen Anne pattern and other fancy design. Regularly \$30.00 and \$35.00 each. Silverware Sale price **17.50**

Our special Casserole, with Guernsey cooking dish, fitted in a fancy pierced stand, with handles and feet, best quality plate. Regularly \$4.50. Silverware Sale price **2.95**

Our Special Deep Apple Dish, with genuine Guernsey Hing and cover, fitted in a fancy pierced silver-plated stand to match casserole, with handles and feet. Regularly \$5.00. Silverware Sale price **3.95**

Lighting Fixtures

Far Down (On Fifth Floor)

Dining-room dome, 16 in. square, fringed amber or green glass for gas or electric. Regularly \$10.50, Monday, at **7.89**

1,000 Tungsten Lamps on special offer at cut prices, 25 watt-reduced to 45c each; 32 or 50 watt reduced to 50c each

Three-light parlor electrolier in brushed brass pan design, chain drops fitted with shades. Regularly \$6.50, Monday **4.49**

Veranda light, brass-cellulose hand, receptacle and large ball shade. Monday **.59**

Two-light gas fixture, rich gilt ready for shades. Monday **.99**

Two-light inverted gas fixtures, burners, mantles and shades, complete, regularly \$4.00, Monday **2.49**

Money Savers

Linens & Staples (Second Floor)

600 PAIRS READY MADE PILLLOW CASES 25c PAIR.

42 x 38 or 44 x 38 inches, hemmed ready to use, torn sizes, made from a good stout bleached English cotton. To clear, Monday, pair **.25**

FINE SATIN DAMASK TABLE CLOTHS \$2 EACH.

Warranted every thread linen, full satin damask and finest bleach, good heavy make, yet fine weave, 2 x 2 1/4 yards, pretty new designs, with heavy border all around, for round or square covered tables. Monday, each **.20** (Phone direct to Linen Dept., Second Floor.)

Some Interesting Silk Items from Our New Spring Stocks

Ivory Duchesse and Charmeuse Satins. A big shipment of the new ivory, mousseline, bridal satins. Very rich, skein-dyed, satins. Drapes beautifully, and guaranteed perfect in finish. 36, 40 and 42 inches wide, \$1.50, \$2.00, \$2.50 and \$3.00 per yard.

New White and Black and White Striped Silks. All widths of stripes, lovely qualities, and fashioned latest mode. 36 and 40 inches wide. Per yard, \$1.50 and \$2.00.

We have opened out some of the richest qualities of the new Black Satin-finished Silks, manufactured specially for us, and bears our name and recommendation on the selvedge. 40 inches wide. Per yard, \$1.50, \$2.00, \$2.50 and \$3.00.

A MONDAY MORNING SPECIAL.

1,000 yards Colored Satins de Chine and Duchesse Paillettes, in all the new spring shades, also ivory and black. 36 and 40 inches wide. Regularly up to \$1.50 per yard. Monday morning, per yard **.98**

Women's and Children's Boots at Special Prices

360 pairs women's boots, in six different styles, tan calf, gunmetal, patent colt and vicid kid leathers, velvet, dull calf and kid tops, button and blucher cuts, high Cuban, medium and low matron heels, medium heavy and light soles; sizes 2 1/2 to 7. Regular \$3.50, Monday **2.45**

300 pairs children's boots, dongsola kid leather, butts and blucher styles, medium heavy soles, spring heels, sizes 5 to 10 1/2, Monday **79**

The SIMPSON Company Limited

The Cost of Your Furniture

must include every repair cost during a reasonable lifetime. The cost of Simpson Furniture is almost entirely first cost, and that is reduced to the lowest figures for the February Furniture Sale.

Monday is Dining-Room Day

- Buffets, in quartered oak and finished rich golden, good cupboard and drawer space, with large bevel plate mirror. Regularly \$24.50. February Furniture Sale **19.30**
- Combination Buffets and China Cabinets, in selected quarter-cut oak, golden finish, extra large cabinet for china, with leaded glass at top of door, double door cupboard, with linen and cutlery above, heavy British bevel plate mirror. Regularly \$46.75, February Furniture Sale **38.00**
- China Cabinets, made of genuine quarter-cut oak, and finished early English or fumed, glass front and ends, with lots of display space. Regularly \$17.00. February Furniture Sale **13.00**
- China Cabinets, in solid quartered oak, and finished rich golden polished, bent glass ends and mirror on top, 4 display shelves. Regularly \$29.50 and \$32.00. February Furniture Sale **24.40**
- China Cabinets, in selected quarter-cut oak, bent glass door and ends, and mirror on top, well made and beautifully finished. Regularly \$36.50. February Furniture Sale **28.00**
- Dining Tables, in solid quartered oak and finished fumed, early English or golden, pedestal design, with round top. Regularly \$19.50, February Furniture Sale **16.80**
- Dining Tables, an exceptionally good pedestal design, with round top, made of carefully selected quarter-cut oak, and finished golden, fumed or early English. Regularly \$28.00. February Furniture Sale **23.70**
- Dining Chairs, in selected quartered oak, full box seats, with genuine leather upholstery, sets of 5 small chairs and 1 arm chair. Regularly \$18.75, February Furniture Sale **15.60**
- Dining Chairs, in genuine quarter-cut oak, and finished rich golden, fumed or early English, solid leather slip seats; sets of 5 small chairs and 1 arm chair. Regularly \$24.75. February Furniture Sale **20.60**
- Dining Room Suite of ten pieces, in solid quartered oak, finished, fumed, buffed, china cabinet, extension table, dinner wagon, 5 side chairs and 1 arm chair. Regularly \$238. Special for Monday **190.00**

Knit Goods for Men and Boys

- Men's Natural "Penangle Brand" Merino Shirts and Drawers, for hard wear, are well made, neatly trimmed and guaranteed unshrinkable. Sizes 34 to 44. Special Monday **.49**
- Men's Bodyguard Underwear, in light or dark shades, spring weight, guaranteed unshrinkable. Sizes 34 to 44. Special Monday **.75**
- Boys' plain blue Cashmere Jerseys, buttons at neck and on shoulder, spring weight, all wool. Sizes 20 to 32. Regularly \$1.00, Monday **.75**
- Babies' Imitation white bear-skin Robes, square shape, large size, white felt lining. Monday **.89**
- Wool Toggles, long or short style, plain or honeycomb stitch, assorted colors. Regularly 35c to 45c, Monday **.15**
- Women's and Misses' Crochet Aviation Caps, colors navy, cardinal, black and sky. Regularly \$1.00 and \$1.25, Monday **.45**

Basement Items for Sale Day

- LAUNDRY AND WOODENWARE.**
- Marvel Washing Machine, cradle style, hardwood, nicely varnished, extra strong, quick clean washer. Regularly \$4.25, Monday **3.98**
- Perforated Chair Seats, all styles and sizes Monday **.10**
- TINWARE.**
- Tin Boilers, hand made, flat copper bottom, sizes 8 and 9 with cover. Regularly \$1.35. Monday **.98**
- Galvanized Boilers, hand made, flat bottom, sizes 8 and 9, with cover. Regularly \$1.00, Monday **.69**
- Oval Footbaths, galvanized. Regularly 40c, Monday **.33**
- HARDWARE.**
- Hot Water Boilers, galvanized, 20 gallons, tested 200 lbs. pressure. Regularly \$4.65, Monday **3.98**
- Buck Saws, Regular 50c, Monday **.39**
- CUTLERY.**
- Three-piece Carving Sets, Sheffield steel, stag handles. 5-inch blades. Regularly \$1.50, Monday **.99**
- BATHROOM FIXTURES.**
- Tumbler Holders, heavily nickel-plated. Regularly 65c, Monday **.49**
- China, Glass and Brassware**
- 200 Decorated English Teapots, sizes to 6 cups. Monday price **.25**
- 150 Covered Vegetable Dishes, round and oval shape. Regularly to 60c. Monday **.25**
- 500 Japanese China Tea Cups and Saucers, in dainty designs. **.10**
- Bread and Butter plates to match. Each **.5**
- \$3.00 German China Tea Set of 40 pieces, hand-some design and gold finish **1.49**
- Dinner Set for 6 persons, in stout English semi-porcelain ware, with floral border design. Monday's special. **2.99**
- \$38.00 Fine Austrian China Dinner Set of 102 pieces, rich body glaze handles and knobs, in old gold. Kermis or ovide cups. Monday special **25.00**



GROCERIES

- Finest Goldust Cornmeal, per stone, 35c; English Marrowfat Peas, 3 packages, 25c; Tilson's Premium Oats, large package, 25c; Choice White Beans, 5 lbs., 25c; Pot Barley, 5 lbs., 25c; Choice Picnic Hams, 5 to 8 lbs. each, per lb., 12c; Pure Orange Marmalade, in quart gem jar, per jar, 25c; Finest Canned Apples, gallon size tin, 25c; Campbell's Condensed Soups, assorted, 2 tins, 25c; Ivory or Silver Gloss Starch, 6 lb. tin, 53c; Old Dutch Cleanser, 3 tins, 25c; Powdered Ammonia, 3 packages, 25c; Sunlight and Surprise Soap, 6 cakes, 25c; Comfort and Borax Soap, 6 cakes, 25c.
- 5 LBS. CELONA TEA, \$1.15.**
- 1,000 lbs. Pure Celona Tea, of uniform quality and fine flavor, black or mixed. Monday, 5 lbs. **1.15**

Sec
VOL.
Poli
SOU
W
Both P
-Lau
Haze
To Sp
ruptio
OTTAW
All election
agent of a
fight. Fro
is claimed
ham will b
Sept. 21 i
which is
large influ
will be do
The Con
fight dete
strained ev
of doing s
mization, i
by the se
suns of t
will be sp
Thursday.
One Hu
The chie
amount of
is no real
rate, for it
But it has
pendent of
votes are
neither ad
protest wh
is reckone
alone will
300,000. Th
out to mal
to vote.
An equ
nomination
mentary m
wers in Be
some ardet
cials, who
manded a
The Libe
assistance
try and t
amongst t
terminated
Graham b
liament, b
speak at t
next Wed
mentary B
polling B
with m
cabinet m
is favor of
The resul
for the L
George Gr
next Liber
the eyes o
upon the t
ex-minute
much vote
and he is
his intere
keen. He
has also
written
take part
land. His
anxiety on
return.
Next we
final stage
again. On
Friday Lauri
in the eve
day Hon.
Laurier w
Hon. Mr. H
address a
today, w
He is
Annprior.
Traffic
Sa
Conclusion
Traffic
Fr
Mayor G
the Big E
about. M
Mayor G
"We have
thousand
statistics,
sidered ca
could dra
definite
to council
Recently
citizens h
civic cap
suburban
scheme of
sive adequ
to the cit
about. On
transport
tematized
scheme.
Mayor
hydro-elec
works and
ultimately
department
said, were
hydro-elec
duced larg
amalgama
Romy and