

Museum, Bull. 79, Ent. 22, p. 344, 1904, in *U. sapphirina*, Osten Sacken). Row of pecten scales reach from the base of tube up to level of tufted hairs. Upper scales overlap one another. Comb of eighth segment, an irregular row of eight to nine simple curved spines springing from a chitinous plate. Chitinous collar completely encircling ninth segment. Dorsal and ventral tufts of hairs spring from oval chitinous plates attached to collar by narrow isthmuses (similar plates are figured by Felt in *U. sapphirina*, Osten Sacken). Anal papillæ long, slender, divergent.

*Pupa*.—Thorax and abdomen with scattered tufted hairs. Siphons subcylindrical, about eight times as long as broad; bases deeply chitimized. Fins acuminate, mid-rib not projecting beyond border. Borders deeply serrated; two halves of fins very unequal.

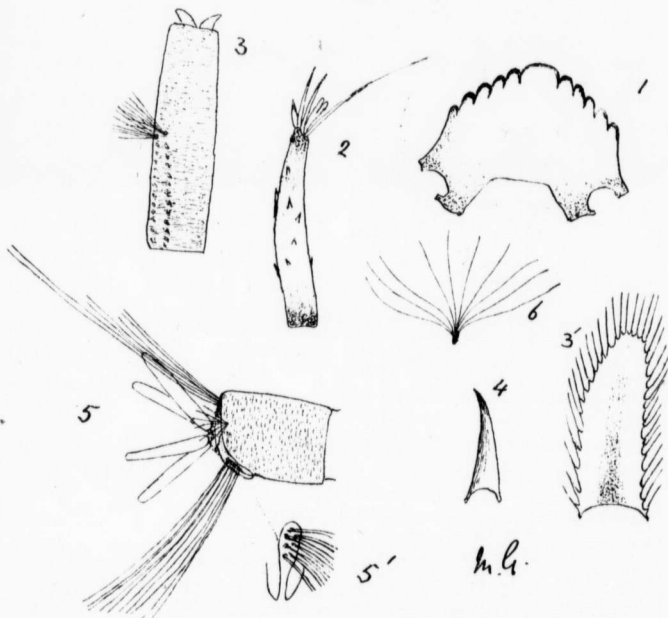


Fig. 24.—*Uranotenia Socialis*, n. sp., Theo.