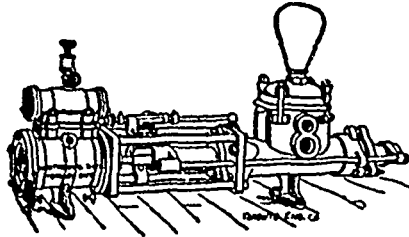


Waterous Engine Works Co.,

WINNIPEG, MAN.

**Engines and Boilers,
Saw Mills.**

**Saw Mill Machinery,
Northey's Steam Pumps,
Grain Choppers,**



We are HEADQUARTERS for

To Dealers who want nice CLEAN GOODS at ROCK-BOTTOM PRICES, communicate with us.

Brooms, Whisks, Brushes, Woodenware, Matches, Cordage, General Store Supplies, Fancy Goods, Toys and Games, Sporting Goods, Glass and Chinaware.

H. A. NELSON & SONS,

MONTREAL - AND - TORONTO.

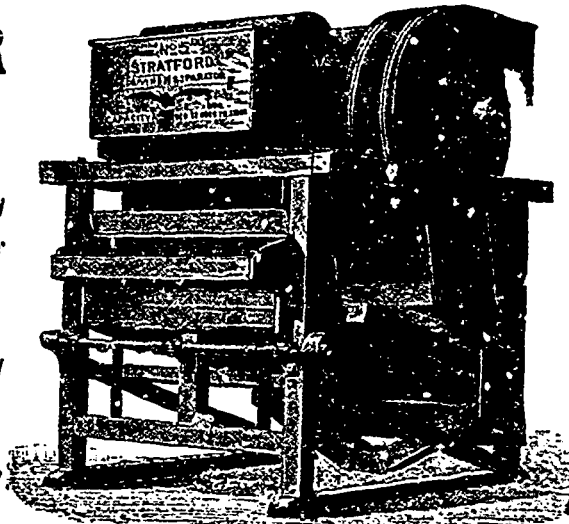
Represented in Manitoba and British Columbia by MR. W. S. CRONE.

STUART & HARPER

AGENTS FOR

Stratford Mill Building Co.
Flour Mill and Elevator Machinery
Dustless Warehouse and Elevator Separators
Dodge Wood Pulleys
New and Second-hand Machinery of all kinds.

758 to 764 Main Street,
Winnipeg.



Cigars

Made in your own Country.

HISPANIA, RED CROSS, KHEDIVE

Try these Brands. They are Unsurpassed.

BRYAN & LEE, Winnipeg.

Andrew Allan, President. John McKechnie, Supt
F. H. Srydges, Vice-President. W. R. Allan, Sec. Treas

THE VULCAN IRON COMPANY, OF MANITOBA LIMITED

MILL ROLLS GROUND & CORRUGATED.
Architectural Iron Work.

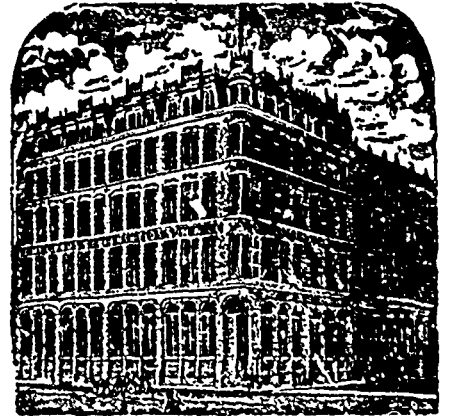
ENGINE AND BOILER WORKS,
GENERAL BLACKSMITHING.

BRIDGE BUILDING A SPECIALTY,
TENDERS SOLICITED.

POINT DOUGLAS AVE., WINNIPEG.

S. Greenshields Son & Co.

MONTREAL AND VANCOUVER, B.C.



We are offering for Spring Delivery the following special lines:

Crums' Prints. Tokio Pongees.
Priestley's Waterwitch Serges, Cravenettes,
Coutilles, Lustres & other Mohair Effects.
Harrison's Brustel's Carpets.

Also a very large range of COTTON GOODS
Samples with C. J. REDMOND, Room 18,
McIntyre Block, Winnipeg.

To the Trade

FALL and SORTING ORDERS now being taken by our Traveller, who will wait upon you shortly. Don't buy until you see our samples. Mail orders attended to promptly.

Geo. H. Rodgers & Co., WHOLESALE DRY GOODS
217 McDermott Avenue,
Box 639 WINNIPEG, MANITOBA

JAS. MCCREADY & CO.,
WHOLESALE
Boot and Shoe Manufacturers,
MONTREAL

W. WILLIAMS, AGENT.
SAMPLE ROOM—Room M, McIntyre Block,
MAIN STREET, WINNIPEG.

M. and L. Samuel Benjamin & Co.,

26, 28, 30 FRONT STREET, WEST.
TORONTO

* Shelf and Heavy Hardware,
* Metals, Tin Plate, etc.
* Lamp Goods and Gas Fixtures.
Plumbers and Steam Fitters' Supplies

Special attention given to import and export trade.
English House: Samuel Sons & Benjamin,
161 Fenchurch St., London, E.C.